

WRIGLEY'S



Horned Lark.

beetles, weevils, grasshoppers, caterpillars, armyworms, ants, wasps, bugs, flies and spiders.

Mourning Dove—Strictly vegetarian, living on wild berries and weed seeds (64%); 7,000 weed seeds were found in one stomach. They often take to the grain fields, but usually after harvest, picking up what is left.

Seed Eaters.

Sparrow—Like the finches, are by nature seed-eaters. Their stout beak enables them to shell and crack hard seeds.

Song Sparrow—Three-fourths of its food consists of noxious weed seeds. The other fourth consists of beetles, weevils, ants, wasps, bugs and caterpillars.

Chipping Sparrow—58% weed seeds, 42% insects—caterpillars, beetles, weevils, ants, wasps, bugs and plant lice. In seven hours this bird returned to its nestlings 119 times with insects, or 17 times per hour.

Horned Lark—Arrives in February or March and lives on weed seeds until insects appear, when it eats May beetles, white grubs, chinch bugs, grasshoppers, cutworms and potato-worm borers.

Our winter birds live principally on weed seeds; and we have 43 varieties of winter birds. The sparrows of Iowa destroy 875 tons of weed seeds per winter; tree sparrows, white-throat, song sparrow, and white-crown sparrow. 7500 weed seeds were found in the crop of a single dove, 4016 in another. The crop of some birds usually contain 500 to 1500 weed seeds. All the birds with short stout bills are seed eaters.

Revive Soap Making Industry

PROBABLY the old leach barrel and soap cauldron have been discarded long ago on most farms, but now that soap is becoming one of the numerous high priced necessities of life, many of us no doubt, will be going back to the soap making business. Others who have never made soap may be anxious to try their luck and for their benefit, particularly, we pass along the following suggestions:

Save the wood ashes separately from the coal ashes, build an old fashioned leach and secure a good supply of lye. All the waste fats from the kitchen should also be saved. This waste kitchen grease can be boiled up with the lye without previous rendering of the fats, and will make a good soft soap for scrubbing or laundry purposes. If one wishes to make a good hard soap for general household use, the fat should be rendered and clarified. Caustic soda should be used instead of the lye from the wood ashes leach. Dr. P. F. Frowbridge of the University of Missouri College of Agriculture, advocates the following method for securing a good quality of soap for household purposes:

"Put one pound of lye into an iron or stone vessel, pour on slowly one and one-third quarts cold water. Stir with a stick until dissolved, then allow it to cool. Heat eighty pounds of soap grease or tallow until it is all melted. Cool until it is lukewarm, then pour the cooled lye solution into the warm grease and stir thoroughly until well mixed and of a uniform consistency. Then pour into a wooden box lined with waxed paper or wetted cloth. Cover and set in a warm place for several days. Turn out of box and cut into bars."

If a person has a number of long narrow boxes into which the soap may be poured, when it hardens it will be a simple task to cut it into pieces convenient for use.

The
universal
military
service
gum—

A Soldier's offering to his sweetheart is naturally the sweetmeat that gave him most refreshment and greatest enjoyment when on duty.

The Flavour Lasts



Deal with Farm & Dairy Advertisers

FARM WOMEN

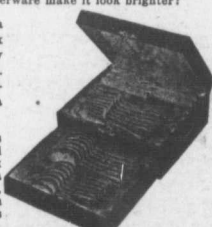
Do you not often wish for something new when setting your table? Wouldn't a new set of silverware make it look brighter?

We can give you FREE a fine chest of silver for the work of securing only Ten New Yearly Subscriptions to Farm and Dairy. These, of course, must be secured at the regular rate of \$1.00 a year.

The chest contains 26 pieces of silver—six solid handled knives, six flat handled forks, six tea spoons, six dessert spoons, a butter knife and a sugar shell. These are all Wm. Rogers & Son Extra Plate, and a guarantee is given with each set.

All you have to do to get this chest and silverware is to send us the names of the ten New Subscribers and the money, and we will send it by Parcel Post. Now here's your chance for something new at no cost to you.

Circulation Department FARM AND DAIRY Peterboro, Ont.



85 Acre Equipped Farm, \$4400

8 Cows, 2 Horses, Hogs and

poultry, wagon, machinery, tools, etc.; only half mile to village; railroad station, school, stores, etc.; 44 acres rich level land; 41 acre brook-watered pasture for 25 cows; estimated 1,000 cords wood, also valuable timber; apple trees; other fruits; good 1-room house, cellar; 1 veranda; beautiful shade lawn; beautiful view of large lake; fine 60-ft. painted barn, cement floor basement; granary, south house, tool house, other good buildings; other suitable to work, must sell, and \$4,400 takes everything; easy terms.

E. A. STRUT FARM AGENCY
Dept. 9 CAMDEN, N.Y.

OUR SEED CORN IS HERE

Our shipment of seed corn has just arrived at our warehouse. We are now in a position to supply you with:

Leaming Fodder \$4.50
Mammoth Southern Sweet, 4.30
Red Cob 4.30
This corn is excellent quality and will germinate around 90 per cent. Bags 500 either way. We will make shipment within one day of receipt of order and freight on 500 orders in old Ontario.

Robertson & Padgett LINDSAY
ONTARIO

CREAM WANTED

We again solicit the patronage of both old and new shippers for the coming season.

Shipments will receive the same careful attention as Freeman and highest prices will be paid promptly for good churning cream. WRITE US FOR PRICES AND PARTICULARS.

Reference, Merchants' Bank, or any of our cream shippers.

Valley Creamery of Ottawa
Limited
319 Sparks St., Ottawa

FOR SALE AND WANT ADVERTISING

THREE CENTS A WORD, CASH WITH ORDER

WANTED—Thoroughly competent man and wife to work as Freeman and Housekeeper, respectively, for large farm having 150 acres clearland, located near river bank, good building with running water; all necessary machinery for proper operation. Also, a competent Cattleman to look after herd of milking Shorthorns on this farm. Apply, giving previous experience, qualifications, references, and other necessary particulars, Box 125, Farm and Dairy, Peterboro, Ontario.

BUTTERMAKERS' WRAPPERS—Name and address printed—best parchment, 500 sheets, anywhere Ontario, \$2.00; 1,000, \$3.00. Cash with order. Farmers' Printery, Beaverton, Ontario.

Do You Need This Useful Book?



If so, sit down and send us at once an order enclosing \$1.50 and we will send it to you.

By Victor W. Page, you at once, prepaid. In this book nothing has been omitted, no details have been slighted, and it is a book you cannot afford to be without.

Book Department
Farm and Dairy, Peterboro, Ont.

Preparation

ONE of the true wife during fall months, a never-ending one products for the few years ago soon began and ended today, however, you cannot quite extend this year, before, housewives' duty of saving over the table line that they place for. Some foolish to can vegetables in the cellar needed, therefore going to the trouble products? There are nevertheless, why vegetables is wise. It is difficult to the cellar until the in without careful bathery. Of course, via that all vegetables would seem a and jars. There, however, to be taken this year. There is a great season, owing to for transportation the tell us they have a goodly supply the canning season. Doubtful if it will we would wish, require sugar when



Packing Blanching Empty Jars to be packed

we can substitute or some extent with be able to help out age in this way.

The can pack fruit is replacing method to a large given being that follow this method easier and results. Another point cold pack method does not require so fruit as does the op By reading over direct to go about cold pack method may seem but when one real business and tries find it easier than purpose giving a here which may some of Our Women lend trying out the first time, this year vegetables receive treatment when being dealt with vegetables possibly more careful the majority of fruit is as follows: Select and prepare blanching, etc.; scald or pack carefully and el for fruit or boiling vegetables; place r to do not seal jar until; remove an