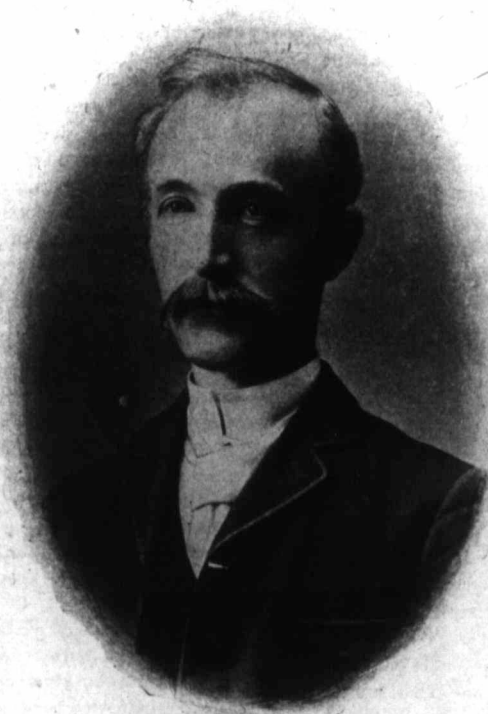


THE CANADIAN BEE JOURNAL.

condition of the spruce itself. After dry hot days and cool nights this saccharine fluid may exude. There are conditions under which the tree has taken up a large amount of moisture from the soil and it can't get away, through the small breathing parts of the leaves and this moisture will exude. There have been certain trees which

to analyze it it wasn't honey at all. Honey, as I said, is a mixture of two sugars, levulose and dextrose, and a large amount of the material in this is the same as cane sugar, 69 per cent. is cane sugar, so I came to the conclusion, although I don't want to state the fact too emphatically, that this material rather was an exudation than



PROFESSOR F. SHUTT

have been known to rain this honey dew upon the ground. Then there is another source of honey dew. The aphids extract the dews and exude it again, and it being of a sweetish nature it attracts the ants. The gentleman who sent this presumed that this material was an exudation from the black aphids. Now I am very much in doubt about it because when I came

an animal product. It only contains about 16 per cent of glucose and about 69 per cent of cane sugar in it. I have been hoping that some members of the Association would send in some genuine specimens of this honey dew so that we could have some data. I think it would be an interesting thing. There are certain trees, oak especially, I believe, is subject to certain condi-