

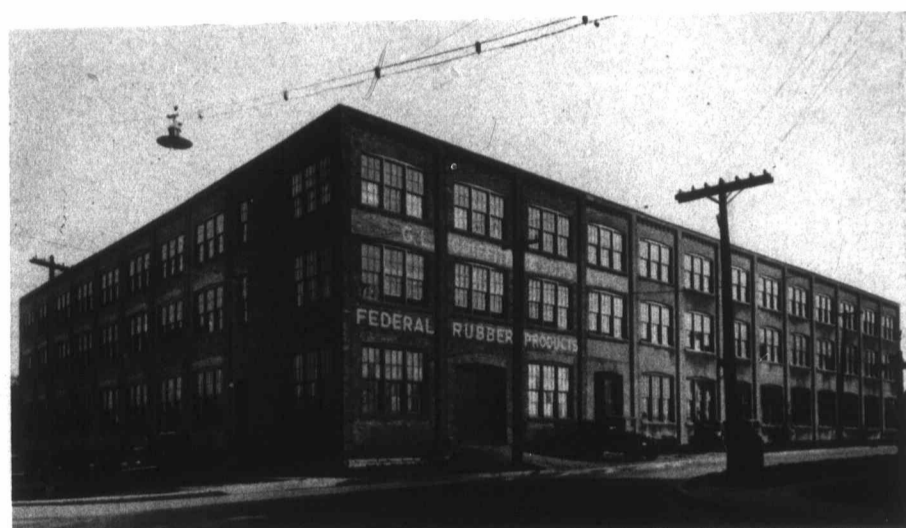
plete "Sani-Sherm" line of bakery trade requirements and other food containers. The second floor will be used in part for the rearrangement of present equipment and also for new machinery to manufacture lines which are not now being produced in Canada.

Cow & Gate (Canada) Limited, Gananoque, Ontario, purchased the plant of the National Milk Products in December, 1933, and commenced operations on June 1, 1934. The plant has a capacity for handling 60,000 lbs. milk and 10,000 lbs. cream, powdered milk being the Company's principal product.

The Dennison Manufacturing Co. of Canada, Limited, Drummondville, P.Q., were established in 1924 in Toronto, where they imported partly manufactured goods, further processed them and packaged them for market. Early in 1930 they decided to build a factory for complete manufacture of their principal items of paper specialties. The factory, which they built at Drummondville, had a floor space of 29,000 sq. ft. and gave employment to 40 persons. Early in 1934 they enlarged their plant to 45,000 sq. ft. and the number of their employees has increased to 65.

The Eagle Pencil Co. of Canada, Limited, established their factory at Drummondville, P.Q., and commenced the manufacture of lead pencils late in 1930. The plant has an area of about 50,000 sq. ft. Early in 1932 they installed equipment for manufacturing Pyralin fountain pens, and mechanical pencils, and this department is now in full swing. In 1932 they also made arrangements with the Blaisdell Pencil Co., of Philadelphia, for the Canadian manufacture of their fine paper-covered china marking and cellophane marking pencils. These paper pencils have a patented string feature which does away with sharpening devices and are the only paper pencils manufactured in Canada. The Company also assemble several other lines of cheaper mechanical pencils.

Dominion Boxboards, Limited, were founded in 1928 as a subsidiary of Dominion Envelope & Cartons, Limited, Toronto. They built their plant on the Eastern Section of Toronto Harbour. The Company comprise two separate manufacturing divisions, the mill division and the carton division, the latter originally having been part of the parent company. Normally about 200 people



**Rubber Company's Expansion at Stratford.**  
Plant with 66,000 square feet of floor space acquired last year by Federal Rubber Products to accommodate their expanding business. The industry was purchased by its present owners, G. L. Griffith & Sons Limited in 1928 and has had a rapid growth, necessitating removal to these larger premises.

are employed, divided approximately half and half between the two divisions. The capacity of the mill is about 24,000 tons of board per annum, varying with the grade of board manufactured. Since beginning operations, the Company have been constantly keeping their plant up to date by various improvements. The latest major addition was the installation of a turbo-generator set. The turbine is of exceptionally high speed and the set has both a D.C. and an A.C. generator upon the same shaft. The D.C. is used to actuate a variable speed motor which drives the board machine. The A.C. is used for all other power.

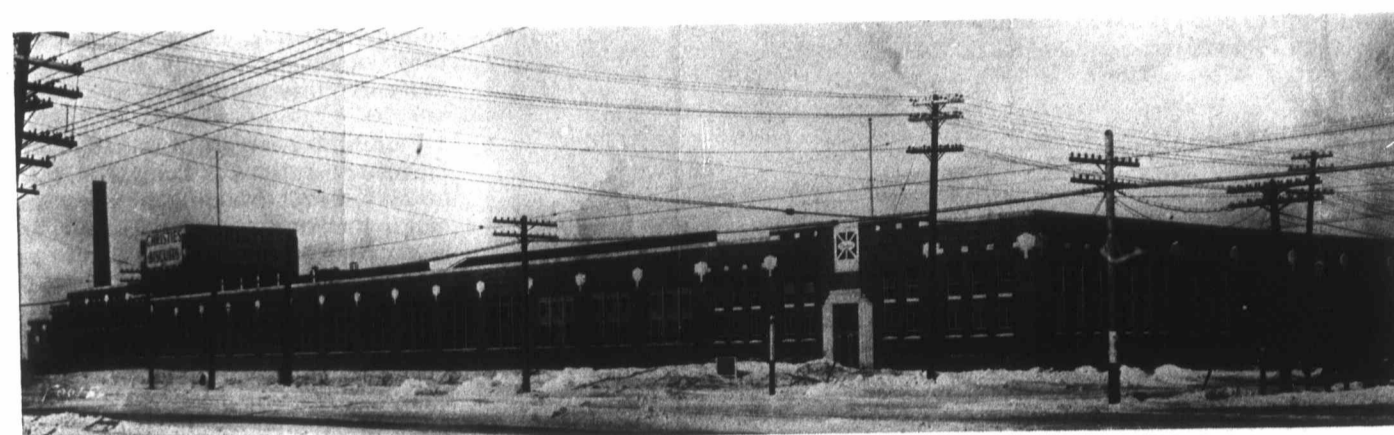
The Quaker Oats Co., Peterborough, report that they are continually making minor changes to improve their product. Three of their package products — Rolled Oats, Corn Flakes and Muffets — are now irradiated with the Sunshine Vitamin D. This has been done at considerable expense but without extra cost to the consumer. Recently they have made a lot of changes in connection with the manufacture and packaging of Puffed Rice and Puffed Wheat. The old plant has been scrapped and new equipment installed throughout. New packaging machines enable them to put out Puffed Rice and Puffed Wheat in triple-sealed packages, the inner lining being made from waxed glassine and the outside wrapper from waxed sulphite paper.

Federal Rubber Products, Stratford, Ont., a subsidiary of G. L. Griffith & Sons, Limited, came under its present management in 1928.

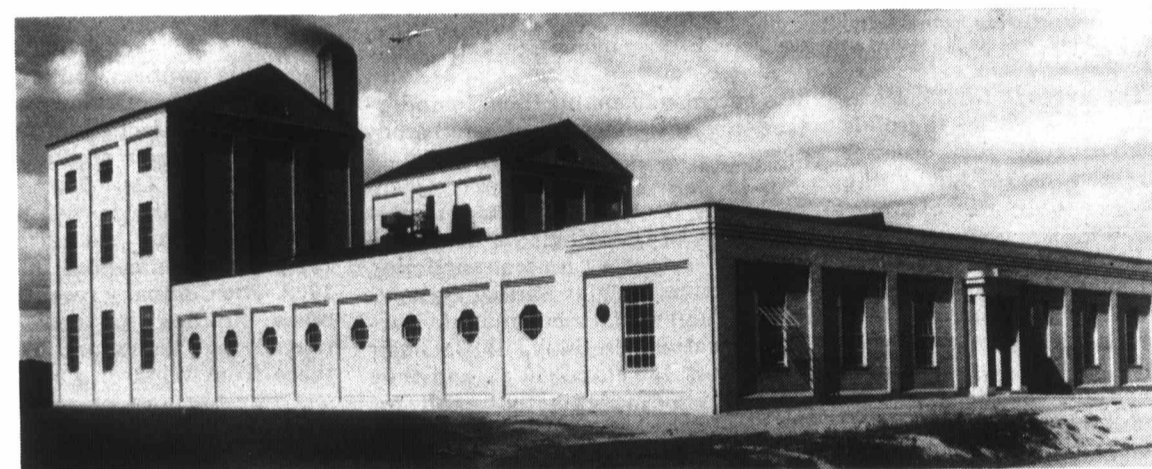
Business was getting nicely under way when the 1929 crash upset things generally. The company, however, went vigorously after business with the result that new equipment had to be added from time to time until by the end of 1933 a building that seemed too large in 1928 was far too small. In February, 1934, they purchased and moved into the former Allis-Chalmers plant in Stratford, a plant of 66,000 sq. ft. of floor space, private railway siding, some 7 acres of ground. Between \$20,000 and \$30,000 was spent in re-equipping it. New sprinklers, stokers, electrical transformers and other building alterations were speedily made, while new mills, presses, vulcanizers and other mechanical equipment were installed. Larger motors and power lines were required.

Howard Smith Paper Mills Limited have erected a new boiler plant with high pressure boilers at their Cornwall Division and have also installed a modern paper machine 154" wide for the manufacture of sulphite bonds and book papers. Continuous replacement of equipment has taken place in all their mills, including those of the Canada Paper Co., some in order to enable them to make new products, and other equipment in order to keep the plant up to date.

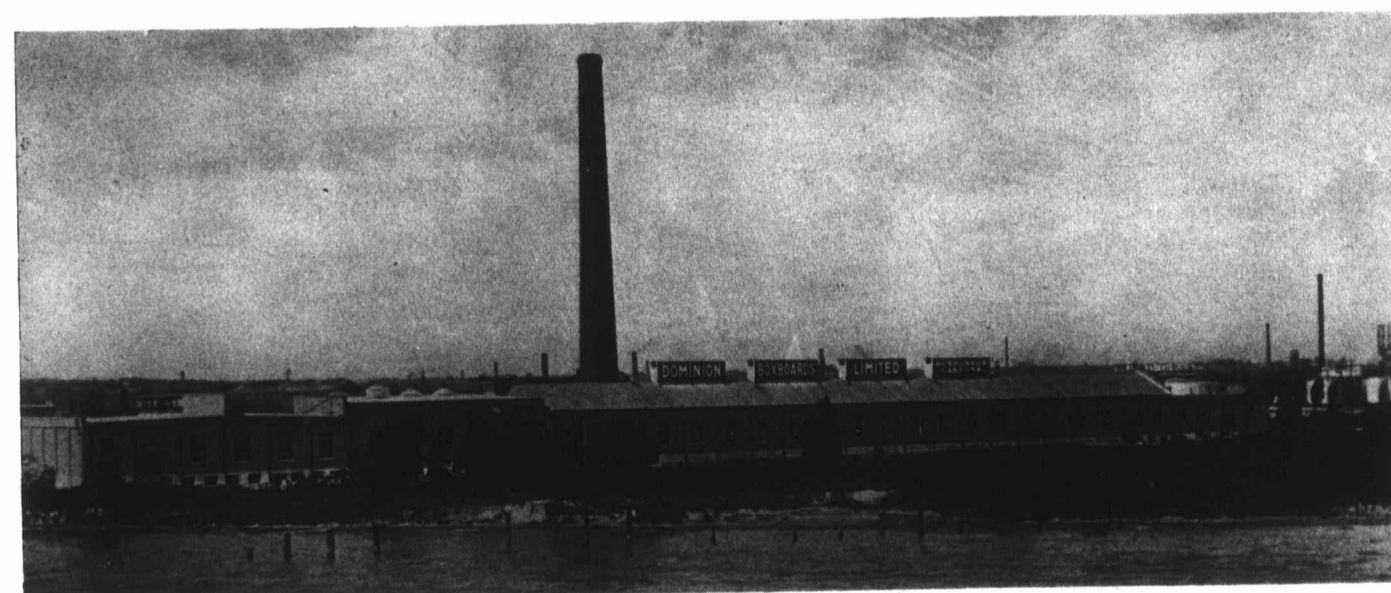
Hayes Manufacturing Company Limited, Vancouver, B.C., manufacturers of motor trucks, trailers and buses, are a new company who started manufacturing in January, 1929, in a plant covering approximately one-half an acre. During the years 1931-32-33 they gave employment to about



**Biscuit Manufacturers Spend Million on New Winnipeg Plant.**  
The Winnipeg factory of Christie, Brown & Co. Limited, completed in 1931, is 460 x 120 feet in area and stands on a site of nearly three acres. It is equipped with modern baking machinery, a refrigerating plant, rest rooms for employees, etc. Products of the bakery are distributed through the four western provinces.



**British Distillers Enter Canadian Field.**  
New plant erected at New Toronto in 1933 by W. & A. Gilbey, Ltd. It is complete in every respect, occupying a foundation area of 143 ft. 6 in. by 96 ft. 7 in., with brew house, still house, fermenting rooms, bottling and labelling rooms, bonded store house, bottle-washing room and power plant. Since commencement of operations in September, 1933, the plant has been enlarged in several directions.



**Boxboard Manufacturers' New and Modern Plant on Toronto Waterfront.**  
Erected in 1928 in the eastern industrial section of Toronto Harbour, this mill of Dominion Boxboards Limited has a capacity of about 24,000 tons of board per annum. The site of the plant is about 8¼ acres in extent, with a water frontage of 300 feet. The main piece of equipment is a seven-cylinder board machine. The buildings also house the York Paper Mills, Limited, recently established by W. A. Crawford, manager of the Dominion Boxboards plant, for the manufacture of light-weight paper specialties.