

## The "KING" Heating System

With a "KING" Hot Water Boiler and "KING" Radiators, solves the house-heating problems. . .



No. 6 High Base "King" Boiler, showing double shaker.

The "KING" Boiler has ALL the latest improvements in operating equipment and fuel saving features known to boiler construction.

### TROUBLE PROOF GRATES

The "KING" patented grates and shaking mechanism are of the side lever adjustable construction and are simple enough for a child to understand, yet the most efficient ash remover yet produced. No bolts or pins are used in attaching grates to the connecting bar.

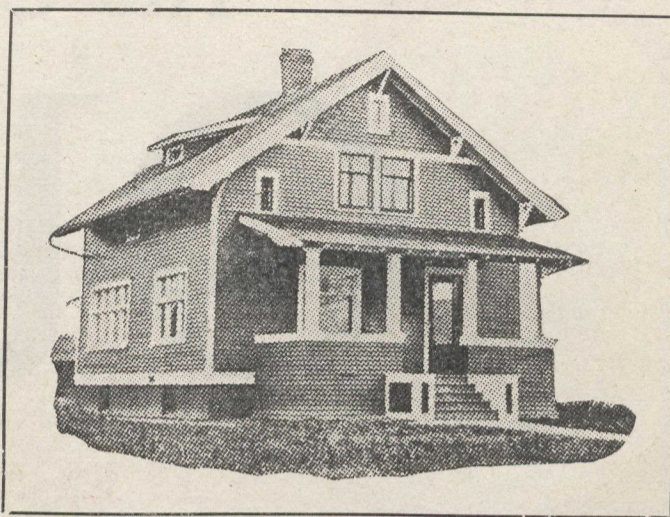
GET OUR BOOKLET "COMFORTABLE HOMES."  
It explains very thoroughly.

**STEEL and RADIATION, Limited**  
(HEAD OFFICE)

Fraser Ave., Toronto

Montreal, 138 Craig St. W.      Quebec, 101 St. John St.

Agencies in all leading cities.



## Ready-Cut Homes

(Warm and Substantial—Not Portable)

### The "Suburban"

No. 1 size                      20 x 22 feet                      \$1,000

And You Can Erect It Yourself

A Ready Cut Home is substantial—it is not a portable house, or a summer house. It is just as enduring and solid as the home the best builder in your neighborhood would erect for his own use.

How simple the "Suburban" or any other Ready Cut Home is to build! The lumber and all material, ready cut to exact size, is delivered to your lot. You nail the material together according to the extremely simple and complete plans and instructions. All hardware, paint and other materials (except masonry) is included in the one cost. You eliminate architect's fees, dealer's profit on lumber, hardware dealer's profit, cost of "extras," cost of skilled labor. Also you obviate weeks of worrying and waiting.

Then you have your choice from upwards of 100 different homes shown in our big, NEW, free catalogue.

### New Book of Designs

Every prospective home builder should have this book. It explains in detail how and why you should build your own home, and gives illustrations, floor plans and specifications of Ready-Cut Homes for from \$200 upwards.

A postal card asking for book 72 will bring it to you. Write now.

The Sovereign Construction Co., Limited

1372 C. P. R. Building

Toronto, Ont.

23



## TAKE THE "ROYAL" ROAD TO EUROPE

St. Lawrence Route Montreal to Bristol

A two days' sheltered sail down the mighty St. Lawrence—days of scenic beauty and historic interest—then but little more than three days on the Atlantic and passengers are whirled by special express trains from Bristol to London in two hours.

### CANADIAN BROTHERHOOD EXCURSION

in connection with the  
NATIONAL BROTHERHOOD CONFERENCE

Birmingham, Eng.,

September 20th to 24th, 1913

#### SAILING DATES

Leave Montreal.	Steamers.	Leave Bristol.
Sat., Aug. 9th.	Royal Edward.	
Sat., Aug. 23rd.	Royal George.	Sat., Oct. 4th.
Sat., Sept. 6th.	Royal Edward.	Sat., Oct. 18th.
	Royal George.	Sat., Nov. 1st.

Special parties will be formed to sail from Canada on above dates and choice accommodation reserved for them.

Special fares in connection with steamship passage will be quoted from any point in Canada to the seaboard.

Regular steamship fares between Montreal or Quebec and Bristol or London.

#### ATTRACTIONS IN ENGLAND

Civic reception at Avonmouth on arrival of "Royal Edward," due August 16th. Trip through the Shakespearian Country, including Stratford, Oxford and Windsor.

Reception by the Lord Mayor, Mansion House, London.

Demonstration at Crystal Palace, London. Choir of 4,000 male voices.

Visit to Windsor Castle.

National Brotherhood Conference at Birmingham.

Full information and further details will be gladly given by any Steamship Agent, or the following General Agents of the Canadian Northern Steamships:—P. Mooney, 123 Hollis St., Halifax, N.S.; Jas. Morrison, A.G.P.A., 226 St. James St., Montreal, Que.; H. C. Bourlier, 52 King St. E., Toronto, Ont.; and A. H. Davis, 254 Union Station, Winnipeg, Man.



Wherever the strain is greatest there the Ford is doubly fortified—with Vanadium steel. And there is more Vanadium used in Ford, than in any other automobile construction. That's the reason the Ford is strongest—lightest—and most durable.

Here's the test: 300,000 Fords now in service. Runabout \$675; Touring Car \$750; Town Car \$1,000—f.o.b. Walkerville, Ont., with all equipment. Get catalogue and particulars from Ford Motor Company of Canada, Limited, Walkerville, Ontario, Canada.