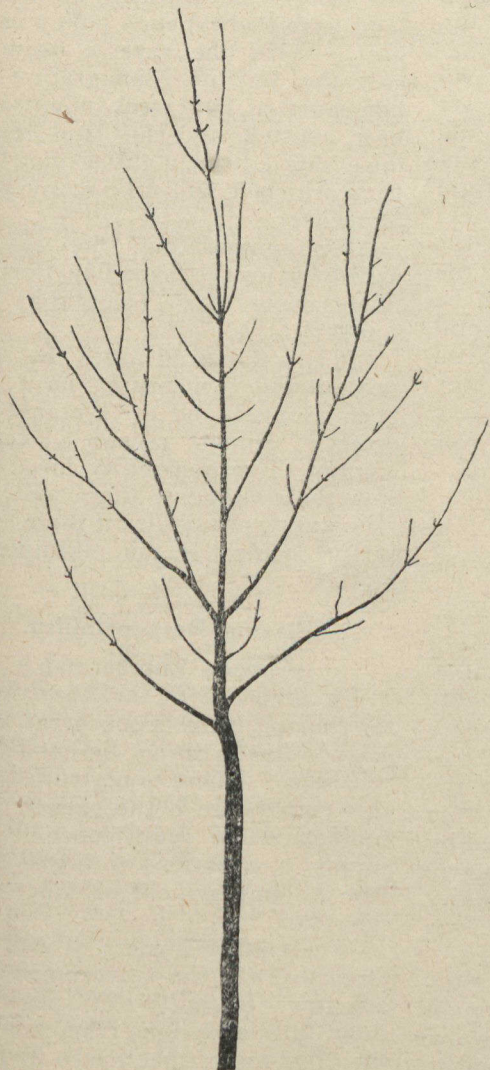


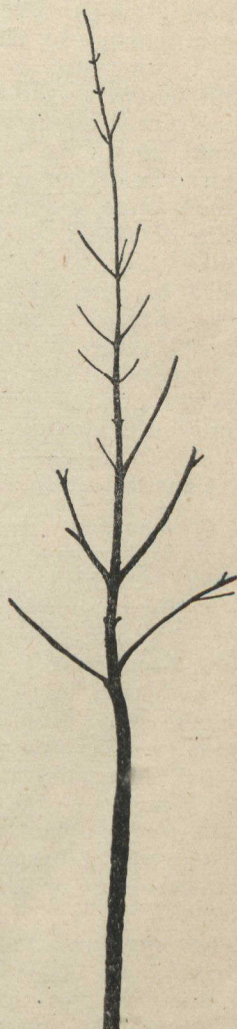
pletely filled and the tree firmly set. It is well to leave an inch or so of loose earth over the whole surface to act as a mulch.

In fall planting a layer of manure or dead leaves over the top will re-

sifted over them, a little at a time, and firmly worked in among them with the fingers or a pointed stick. This is proceeded with until the hole is filled. It is important to have the soil well packed about the roots.



Before Pruning.



Pruned Before Setting Out.

duce the chance of heaving in the early spring.

Trees without earth about their roots should be set in a similarly prepared hole so that the roots spread naturally and are not twisted or crowded. Rich soil should then be

In setting a tree care should be taken from the very start to see that the stem is kept perfectly vertical. Attempts made to straighten it after the earth has been packed about the roots are liable to injure the tree.