

# Our Special Midsummer Sale Interests

Store Hours: 8.30 a.m. to 5.30 p.m.

Saturday Closing 1.00 p. m., with No Noon Delivery

## Foot Comfort for Hot Days at Half Price for Tomorrow

Nothing is more essential to the enjoyment of warm days than sensible, substantial shoes. Your size in excellent style is here, probably among this bargain lot, if you come early and look about for them. Saturday's Rush Items are these:

### MEN'S \$5.00 BOOTS, \$2.50

Over two thousand pairs of High-grade Boots, made on the smartest of this season's lasts, in button, Balmoral and Blucher styles. The soles on every pair are Goodyear welted; light, medium and heavy weights; the leathers are gunmetal calf, tan Russia calf, dongola kid and velours calf; sizes 5 1/2 to 11. Regularly \$5.00. Saturday half-price..... 2.50

### MEN'S \$4.00 AND \$4.50 OXFORDS, \$1.95

Finest Tan Russia Calf and Selected Patent Colt Oxfords; made on popular lasts, in both button and laced styles; every pair has medium weight Goodyear welted soles, medium or low heels; sizes 5 1/2 to 10. Regular selling prices were \$4.00 and \$4.50. Saturday less than half-price... 1.95

### WOMEN'S \$3.50 PUMPS AND OXFORDS, \$1.75

There is a style to suit every woman in this lot of "Queen Quality." "Classic" and other high-grade shoes. There are all leathers and fabrics; made on perfect fitting up-to-date lasts; medium and light-weight soles; high, medium and low heels; sizes 2 1/2 to 7. Regularly \$3.50. Saturday, half-price..... 1.75

### CHILDREN'S \$1.25 SLIPPERS, 62c.

Neat, Comfortable Slippers for little children; in sizes 3 to 7 1/2; ankle and instep strap styles, in selected patent calf and champagne kid, also dainty little champagne kid sandals; some are lined with white kid; all are finished with neat little bows; light, flexible hand-turned soles; some have spring heels; others have no heels. Regularly \$1.25. Saturday, half-price..... .62  
(Second Floor.)

## Four Items of Furniture

40 Only Dressers, in rich quarter-cut oak finish, golden color, large case, three long, deep drawers, with brass fittings, British bevel plate mirror at back. Regularly \$8.00. Special, Saturday..... 4.95  
100 Only Mattresses, the centre is well filled with curled seagrass, heavy layer of felt at both sides neatly tufted and covered in twill ticking; can be supplied in all sizes. Regularly \$2.60. Special, Saturday..... 2.10  
Refrigerators, case is made of selected hardwood, 29 inches wide, 49 inches deep, 42 inches high, galvanized lined. Regularly \$8.50. Extra special, Saturday..... 6.50  
Verandah Chairs and Rockers, the frames are made of seasoned hardwood, and can be supplied in red, green, or natural finishes; have double wove cane seat and back, broad arms. Regularly \$2.70. Special, Saturday..... 2.10

## \$6.50 Wrist Watches \$4.75

Good timekeepers, high-grade, 15-jewel movements, especially adjusted for wrist wear; gunmetal cases with two backs and best quality leather straps. Regularly \$6.50. Saturday morning..... 4.75  
Written guarantee with each watch.

## Corsets—White-wear

At this time of year we find balances on hand, particularly from the best selling lines of Corsets. That's the Store side of it. The customer's side is that daintiness and freshness in corsage is never more desirable than in warm weather like this. Here they are, all the fashionable features, fabrics, and shaping right. Regularly priced \$1.25 to \$1.75. Sizes 18 to 26 inch. Corsets, Saturday..... .95

CREPE NIGHTGOWNS, 89c. They are the slip-over kind, and they don't have to be ironed, two points in their favor. Incidentally, they are prettily trimmed. Lengths 56 to 60 inches. Saturday..... .89

## \$2.25 PRINCESS SLIPS FOR \$1.25

These slips of nainsook and embroidery are good throughout, and the price reduction speaks for itself; 24 to 42 bust. Saturday 1.25

## Women's Vests, of ribbed white cotton; 15c to 25c. Saturday at..... 10

Women's Ribbed Combinations, low neck, short or no sleeves, umbrella or close knee; 32 to 44. Saturday..... 17 (Third Floor)

## 9 Diamond Rings Specially Priced

1 14k. 7-stone Diamond Cluster Ring. Reg. \$86.00. Saturday..... 21.50  
1 14k. Single Stone Diamond Ring, 1/4 ct. stone. Saturday..... 5.95  
1 14k. 2-ruby and 1-diamond 3-stone Ring. Saturday..... 18.95  
1 14k. Single Stone Engagement Ring, 1/4 ct. Saturday..... 17.95  
1 14k. and platinum Men's Ring. Regularly \$30.00. Saturday..... 23.00  
1 gold and platinum Marquise Ring, 1/4 ct. Saturday..... 70.00  
1 14k. and platinum 2-diamond and 1-ruby Ring. Saturday..... 46.50  
1 14k. and platinum Single Stone Ring. Reg. \$32.50. Saturday..... 21.75  
1 14k. and platinum Solitaire Ring, 1/4 ct. Saturday..... 39.50 (Main Floor.)

## Carpet Values

AXMINSTER AND WILTON RUGS, \$28.75. From regular stocks, in the following sizes. Those in greatest demand. The designs and colors are some of the very best; 8.3 x 10.6 apt 8.3 x 11.6 Seamless Imported Axminsters; 9.0 x 10.6 Seamed Axminsters and Wiltons; 9.0x12.0 Seamless Imported Axminsters and Seamed Imported Axminsters and Wiltons. Rugs suitable for all rooms. Saturday, each..... 28.75

## Specials in Chinaware

15c MILK JUGS, 5c. 200 Only English Porcelain Milk Jugs, about one quart size. Good quality and shape, clear white ware. Regular 15c. Saturday, 8.30 a.m., each..... 5  
Not more than three Jugs to a customer.  
WHEAT PATTERNS. Splendid grade English porcelain, pretty gold wheat sheaf decoration; strong, serviceable, well glazed ware. Fruit Saucers. Regular 60c dozen, for, half dozen..... 18  
Toast; Oatmeal Dishes. Regular 60c dozen, for, half dozen..... 18  
Tea Plates. Regular 60c dozen, for, half dozen..... 18

## Hosiery and Gloves

Women's Lisle Thread Hose—The lot consists of plain black and tan, black with silk embroidered fronts and white lace. Regularly 35c and 50c. Saturday... 29  
Women's Silk Boot Hose, with lisle thread top; deep garter welt; spliced heel, toe and sole; black, white, tan; 50c value..... 39, 3 pairs 1.10  
Silk Gloves, 75c — Women's Long Silk Gloves, double-tipped fingers; opening at wrist with dome fasteners; black, white, cream, Copenhagen and tan. Regularly \$1.25. Saturday..... 75  
Misses' Fine Cashmere Hose, 1-1 ribbed, black, tan, white, sky, pink, cardinal; sizes 7 1/2 to 8 1/2. Special Saturday..... 30  
Infants' and Children's Lisle Socks, fancy tops, sizes 4 to 8 1/2. Regularly 15c and 20c, Saturday..... 12 1/2 (Main Floor)

## Vacuum Cleaner \$8.75

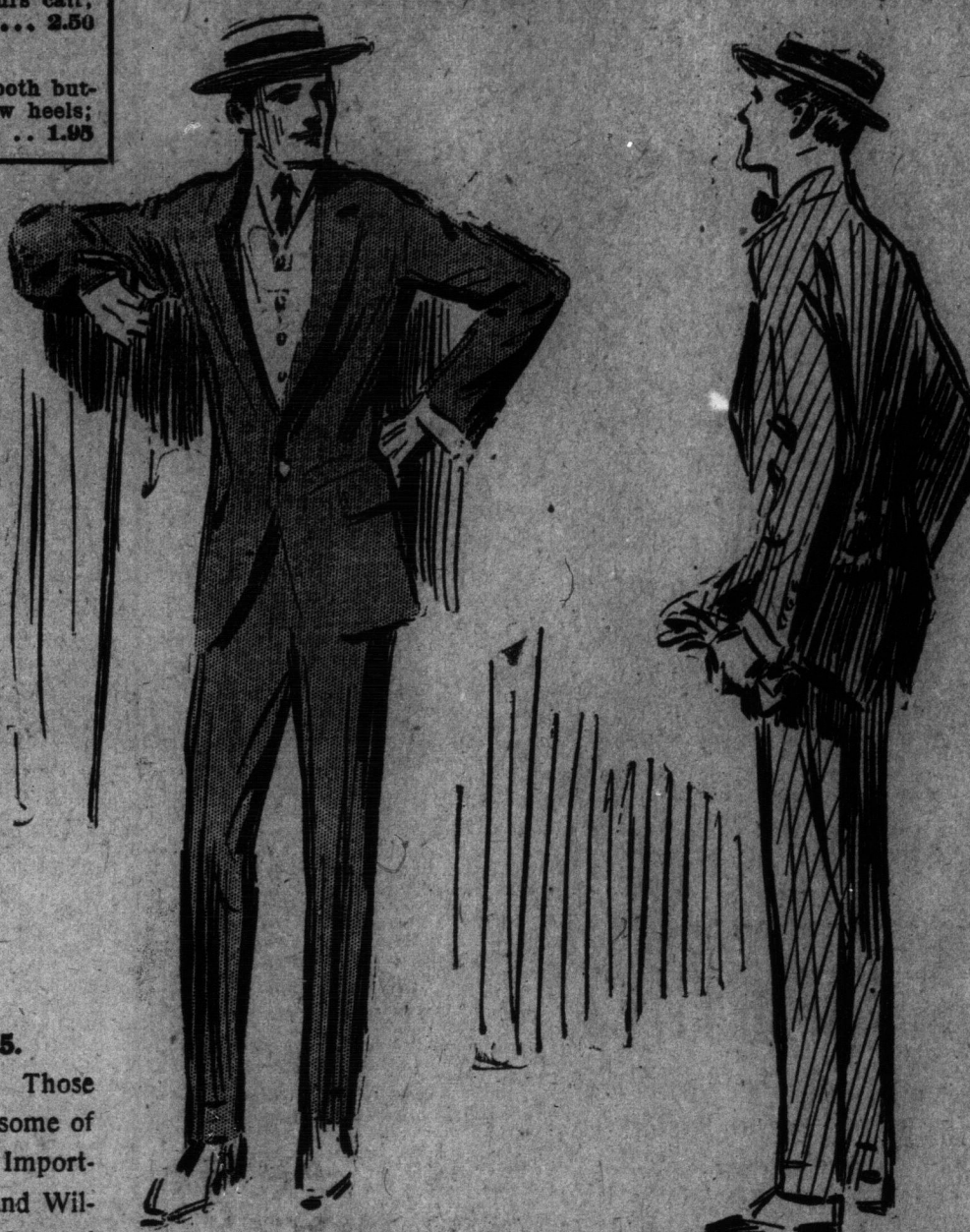
The greatest efficiency is represented in this small machine, which does the work of both vacuum cleaner and carpet sweeper, with a revolving brush, which removes lint and scraps from the surface. Hand-power only. Special..... 8.75

## Carpet Hassocks, octagon, round and oblong shapes; in all colors, Each..... 59

(Fourth Floor)

## New Summer Wear for Summer Men

No fussing with fittings, nor uncertainty of effect—here are clothes for hot weather all ready to put on, and a triple mirror to judge them in. Unusual dimensions offer no difficulties in our Men's Clothing Department, for there are sizes and shapes to fit all of you men who need clothes. The variety of cut and materials is almost limitless, as is the price range also. Men's Furnishings—Shirts, Ties, Hosiery, Gloves and Hats are here in abundance, and all the newest styles are featured in each line. These specials tomorrow



English Tweed Suits of \$12.50 to \$18.00—grades are the half-day offering in the Men's Clothing Department. They are of clean patterns, in brown and gray; single-breasted and smartly cut; lined with mohair. Sizes 34 to 44. 8.30 Saturday morning, until 1 p.m., if they last... 9.95  
Separate Trousers at \$2.00. An exceptional value for knock-about wear; well made and carefully tailored. Sizes 34 to 44, Saturday morning..... 2.00  
Cotton-Linen Mixture Suits, \$24.00. These are strictly summer suits attractively made, and very cool in wear; they usually sell for \$37.50 but the Saturday price is..... 24.00  
Striped White Flannel Pants, \$3.50. English materials, and sporting cut, go to the making of these indispensable summer garments. Price..... 3.50  
FOR YOUNGER MEN AND LADS.  
Youths' Long Trousers Suits; odd lines from regular stock; single-breasted sack and Norfolk styles; some with vest; of English tweeds, with serge linings; sizes 32 to 35. Regularly \$12.00, \$12.50, \$13.50, \$14.50, \$15.00, for..... 8.00  
Boys' Two-piece Suits; single-breasted Norfolk and double-breasted sack styles; of English tweeds, in gray and brown. Sizes 25 to 34. Regularly \$4.00 to \$5.00. Saturday morning..... 3.00  
HATS FOR THE OUTDOORS MAN.  
Boater Straws for men; American shapes, and fine braids. Regular prices were twice and three times as much as Saturday's special price of..... 1.00  
Negligé Straw Hats, of Italian chipe braids, pliable. Regularly \$1.50 for..... .75  
Panama Hats, genuine of course, natural bleach, and several smart shapes; the usual price of \$5.00 wasn't objected to by anybody, but Saturday they clear out at..... 2.40  
Those Easy-going, Sporting Land and Water Hats which both sexes and all ages use, are offered Saturday in plain and mixed effects, at..... .25  
Children's Straw Hats, in Canton and Milan braids. Regularly \$1.50 and \$2.00, for..... .85  
QUITE A LIST OF HOSIERY SPECIALS.  
Men's Pen-Angly Silk Socks, seconds, for wear as good as firsts; black, tan. Regularly 50c. Saturday 35c, 3 pairs \$1.00.  
Men's Lisle Thread Socks; black, tan and colors; also silk embroidered. Regularly 35c and 50c. Saturday 25c, 3 pairs 95c.  
Men's Lisle Thread Socks; black, tan and colors. Regularly 25c. Saturday 15c, 3 pairs 55c.  
Men's Fine Imported Light-weight Cashmere Socks; black, tan, gray. Regularly 50c, for..... 29  
Men's Silk and Cashmere Shot Socks; fine elastic rib; black with contrasting colors in silk. Regularly 60c value. Saturday 50c, 3 pairs \$1.50.  
Men's Hole-proof Silk Socks; 3 pairs; guaranteed to wear three months; black, tan, gray. 75c, 3 pairs \$2.00.  
Men's Pure Silk Socks; black, with contrasting colors; proper weights for present wear. Regularly \$1.00. Saturday..... 75  
Men's White Silk Socks; good weight; spliced heel, toe and sole; all sizes. Saturday..... 40  
MEN'S FURNISHINGS ON THE MAIN FLOOR.  
Men's Negligé Shirts; soft or laundered cuffs; all this season's goods. Sizes and half sizes, 14 to 18. Regularly \$1.25 and \$1.50. Sale price..... .90  
Men's Negligés; mostly laundered cuffs; hairline stripe designs; large, roomy shirts; cut coat style; sizes and half sizes, 14 to 18. Regularly 95c and \$1.00. Sale price..... .80  
Men's Closed Crotch Combinations; short sleeves and knee length only, in pure white nainsook, and open mesh materials; sizes 34 to 44. Regularly 1.50 and \$2.00. Sale price..... .90  
Men's Combinations, in the better qualities of French lisle, habraignans, Sea Island, English and Canadian natural wools; all the closed crotch; sizes 34 to 44. Regularly \$1.50, \$2.00, \$2.50 and \$3.00. Sale price..... 1.30  
Men's Pyjamas; several odd and broken lines of summer-weight materials, in plain and stripe designs, and several suits of English flannellette; all have frog or button fastenings; sizes 34 to 44. Regularly \$1.25, \$1.50 and \$2.00. Sale price..... 80

## BREAKFAST Ready at 8.30

Home-like Breakfasts are served each day for those whose families are away for the Summer. Here is choice of four menus, each priced.... 20  
Rolled Oats or Wheat with Cream; New-laid Eggs, 2, boiled or poached; Toast; Pot of Tea or Coffee with Cream.  
Orange Slices, Toasted Corn Flakes with Plain Omelette; Toast; Pot of Tea or Coffee, with Cream.  
Rolled Oats or Wheat with Cream; Fried Bacon; Hash Brown Potatoes; Toast; Oatmeal Porridge; Pot of Tea or Coffee, with Cream.  
Half Grape Fruit; Shredded Wheat Biscuits, 1, with Cream; Pot of Tea or Coffee, with Cream. (Sixth Floor.)

## Warm Weather Toilet Requisites

Drillies Illusions, the perfume without alcohol, the veritable fragrance of the fresh blossoms.  
Lilac, Lily of the Valley and Rose, per bottle..... 1.50  
Violet, per bottle..... 1.75  
Imported J. M. F. Eau de Cologne, 6-ounce wicker bottle, each..... 85  
French Violet Toilet Soap, guest room size, 12 cakes for..... 25  
Gibb's English Bath Soap, large cake, 8 cakes for..... 35  
Scott Tourist Package, containing 6 paper towels, 1 comb, 1 wash cloth, 1 portion soap, 1 drinking cup. Per package..... 10  
Rorer and Challete's Riora Powder, in pink, fish, white and cream. Per package..... 20  
Hind's Honey and Almond Cream. Per bottle..... 35  
Dr. Stohr's Bath Tablets, 3 packages for..... 25  
Williams' Talcum Powders, violet, carnation, toseca, rose and karai. Per tin..... 15  
Toilet Goods Dept. (Main Floor.)

## Gunmetal Bags

Gunmetal Mesh Bag, ring mesh; 5-inch frame; in four different styles. Regularly \$2.00. Saturday..... 1.15  
Mesh Bag with long chain, 4-inch frame; hard ring mesh. Regularly 75c and 1.00. Saturday..... 40 (Main Floor.)

## Materials for Midsummer Use

Originality in your clothes and home depends much upon materials—fabrics and their combinations. Among the lists here given are some very special values and very wide ranges of color and texture, as a help to you in solving your problems. See them and get the inspiration they can supply.

## Values in Wash Fabrics

35-inch Rationes in plain shades of blue, tan, brown, mauve, Nell rose, sky, etc. A rush price at..... 10  
35-inch Heavy Poplins, in shades of pink, mauve, blue, natural, cream, brown and black. Saturday..... 11 1/2  
Remnants of Prints, Gingham, Ducks, Drills, Crepes, etc., at..... .40 (Second Floor.)

## Silks in Season

You can use them right now, for everyday wear, for a summer evening frock, for slips, for cool waists. Look them over and count up what advantage the price reductions spell. Then decide to purchase early, for it is coolest in the Store just after opening.  
Ivory Japanese Silks, 36 inches wide. Regularly 65c. Saturday..... 48  
35-inch and 34-inch Shantung Raw Silks. Regularly priced 90c. Saturday, yard..... 35  
A handsome Black Satin Duchesse, 36 inches. Regularly \$1.35. Saturday..... .97  
Duchesse Satins, in colors. Regularly \$1.25 yard. 36 inches wide. Saturday..... .88 (Second Floor.)

## In the Dress Goods

Some people associate low prices with low quality. But prices are determined by many other reasons, including such things as stock-taking and change of seasons. Here are two specials to prove it:  
Lustrous for Bathing Suits, mohair, 42-inch, wide range of shades. Worth 50c. Saturday..... 38  
All Sorts of Dress Goods, pencil stripes, checks, serges, San Toys, etc.; 44 in. to 50 in. wide; just a big wholesale clean-up. Saturday, per yard..... 48

## In the Draperies

300 pairs only of Superior Nottingham Lace Curtains. Regularly 90c pair; 2 1/2 yards long; 48 inches wide. For Saturday at 8.30, per pair..... 59  
No phone or mail orders.  
Summertime Matting Boxes. "Summertime" because they look right in warm weather and serve to hold all the numerous little things that would otherwise be scattered right and left. These are of white southern pine, covered with Jap matting, and there are sizes and prices: 27 by 18 1/2 by 15 inches, special for Saturday \$2.90; 36 by 12 by 17 inches, special for Saturday \$2.90; 36 by 18 by 17 inches, with sliding tray, \$4.50; 42 by 13 by 23 inches, with sliding tray, \$6.50.  
A Complete Window Shade. Regular value 40 cents, in white or cream, size 27 x 70, with brackets and pulley. Saturday, 2.50, at each..... 22  
No phone orders filled.  
Lace Trimmed Window Shades, 30c. Size 36 x 70 inches, green only, mounted on reliable spring rollers. Regularly 75c. Saturday, 4.50, each..... 39 (Fourth Floor.)

## Linens and Staples Fourth Floor

35c Bath Towels, 25c pair. Pure white or striped; colors fast; good size. Regularly 35c pair; Saturday, pair..... 25  
\$5.00 Crochet Quilts, \$1.98. Snowy white American crochet quilts, for large double beds; 82 in. x 95 in. Regularly \$3.00. Saturday, each..... 1.98  
Remnants of Hair-Price. Clearing all remnants of sheetings, pillow-cottons, longcloths, nainsooks, white and natural dress linens. On sale Linen Department, 4th Floor, Saturday half-price.  
No mail or phone orders.  
\$1.75 English Cambrie Comforters. Size 70 x 70, in neat floral designs. Regularly \$1.75. Clearing Saturday, each..... 1.25  
Home-made Pillow Cases, 4 pairs for 95c. 42 in. x 33 in. and 44 in. x 33 in.; strong English cotton, of even weave. Clearing Saturday, 4 pairs for..... .85  
36-inch White Dress Linen, 25c. A pure Irish linen; splendid for wash dresses. Clearing Saturday, yard..... .25 (Fourth Floor.)

## Grocery List

2,000 lbs. Fresh Creamery Butter..... 29  
White Clover Brand. Per lb..... 23  
Toasted Cornflakes, 3 packages..... 25  
Loaf Sugar, 4 lbs..... 11  
Imported French Peas. Per tin..... 11  
Finest Canned Corn, 3 tins..... 11  
Choice Red Salmon, Tiger Brand..... 11  
Per tin..... 11  
Clark's Fork and Beans, in chili sauce. Large tin..... 10  
California Asparagus Tips. Per tin..... 22  
Baker's Cocoa, 1/2-lb. tin..... 22  
Soyevain Brand Lima Beans..... 11  
Berries and cherries. Per tin..... 16  
Crested Fish Brand Kipperd Herring. Per tin..... 10  
Maconochie's Pickles, mixed, chow and Walnuts. Pint bottle..... 22  
Finest Mild Cheese. Per lb..... 22  
Soyevain Brand Lima Beans..... 11  
Clark's Fatted Meats, assorted..... 5  
Tins..... 25  
Shirley's Marmalade, 2-lb. jar..... 25  
Garton's H. P. Sauce. Per bottle..... 18  
Maconochie's Biscuits, assorted..... 7  
4th Floor..... 15  
Choice Olives. Per bottle..... 15  
500 lbs. Fresh Peel Cake. Per lb. 15  
Fancy Mixed Biscuits, 2 lbs..... 25 (Basement.)

# The Robert Simpson Company, Limited