



**L
U
M
B
E
R**



W. C. Edwards & Co.

Limited

OTTAWA, CANADA

MANUFACTURERS OF

Dimension Timber, Sawn and Dressed Lumber
Pine and Cedar Shingles, Lath, Etc., Etc.
All kinds of Building Material and House Finish.

Sash, Doors, Mouldings, Hardwood Flooring,
Clapboard, Sheathing, Boxes and Box Shooks.

DESIGNS FURNISHED
AND ESTIMATES GIVEN.

A Special Department
for the Manufacture of

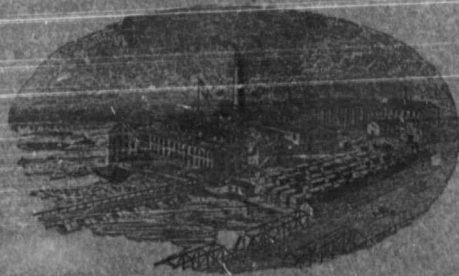
Wood Mantels, Show Cases, Fine
Hardwood Interior Finish, Bank,
Office and Bar Fittings, Shop Fix-
tures, Church and Lodge Furniture,
Plumbers' Woodwork, Stairwork.

SAW MILLS AT

ROCKLAND, ONTARIO
OTTAWA, ONTARIO

FACTORIES

SUSSEX ST., OTTAWA
BANK ST., OTTAWA



Factory and Planing Mills.