

GENERAL MINING MACHINERY.—Continued.

FRASER & CHALMERS

147 FULTON ST., CHICAGO, ILL., U.S.A.

—HEADQUARTERS FOR—

Mining Machinery.

Hoisting
Engines for
Deep Mines.

Prospectors
Hoists.

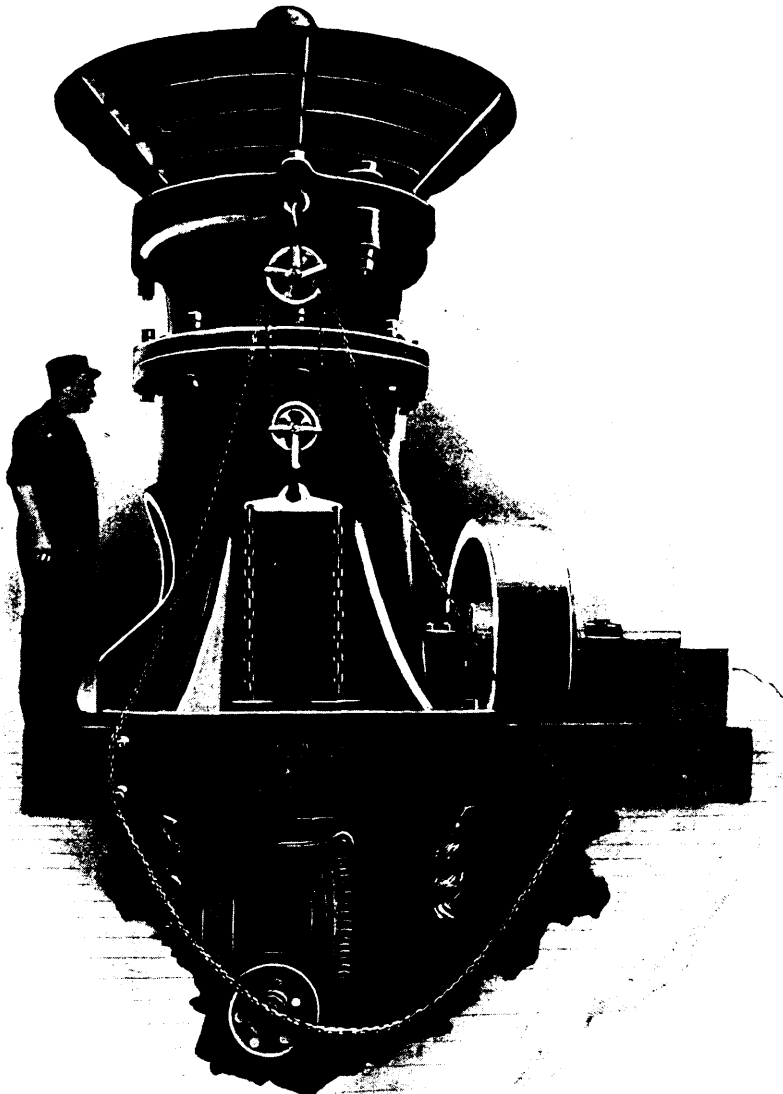
Gray's
Patent
Chairs.

Cars,
Cages.

Sederholm
Boilers.

Corliss
Engines.

Reidler
Pumps and
Air Com-
pressors.



Adjustable
Comet
Rock and
Ore
Crushers.

Perforated
Metals
for all
Purposes.

(We are pleased to send
screen samples to intend-
ing purchasers.)

Improved
Crushing
Rolls.

Smelting
and
Roasting
Furnaces.

Stamp Mills & Concentrating Mills

And equipment of every kind. Our machinery in these lines is more largely used than that of any other manufacturer. It is in use on all gold fields and is recognised everywhere as the best. The Whitewater Deep Concentrator is a recent example of our work. Ball Pulverizers such as used at the Republic Mine and the Helena & Livingstone Mill are of our manufacture. Write for Catalogue.

—REPRESENTED BY—

MENNO UNZICKER, SPOKANE HOTEL, SPOKANE, WASH.

Exclusive Manufacturers of Riedler Pumps and Air Compressors for United States, Canada, Mexico, South America, England, South Africa and Australia.

When writing to Advertisers kindly refer to the B.C. MINING RECORD.