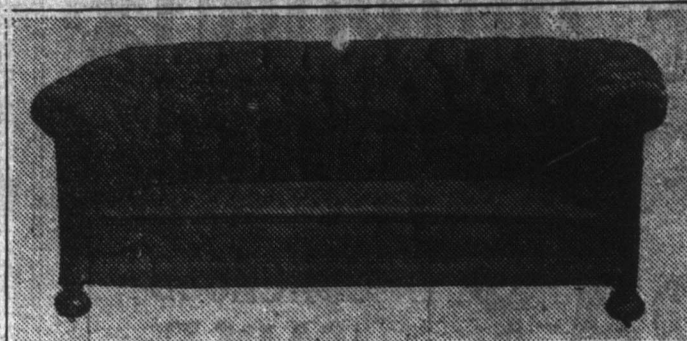


Guaranteed Products!



Buy Upholstered Furniture that stays upholstered. Don't experiment with Chesterfields and Chairs that have nothing to recommend them but attractive prices. We make all our own frames from the best selected hardwoods and insure a solid foundation to build upon. The springs are manufactured of the best oil tempered Premier Spring Wire. Nothing but the best quality of stuffing materials are used, and all work is carefully inspected before it leaves our factory.

POPE'S
Furniture and Mattress Factory
EST. 1860. PHONE 659
GEORGE & WALDEGRAVE STS.
June 13, 1911

The only way to know our SPECIALS is your acceptance of our invitation to call and look them over or send for samples.
To Know Bon Marche Specials is to Want Bon Marche Specials.

MATS! — — — MATS!
VELVET ROPE DOOR MATS 24 x 14 .75c
27 x 16 .85c
30 x 18 \$1.50
SPECIAL HEAVY RUBBER DOOR MATS . \$2.50 each

DUTCH ROPE DOOR MATS 24 x 14 .55c
27 x 16 .75c
30 x 18 90c

Our DRESS DEPARTMENT is full of SPECIALS.
Range of Dress Tweeds .45c Navy & Black Serge .80c
Dress Flannels .60c 54" Heavy Melton \$1.10
We are the Home of GOOD SERGES at all Prices.

HOSIERY! Specials: Black & Coloured Hose .32c
Extra Strong Lisle Hose—Black and Cord; only .35c
OUR RANGE OF ENGLISH SILK HOSIERY .80c, \$1.50

UNDERWEAR! — — — UNDERWEAR!
Ladies' Strap Vests .19c Ladies' Half Sleeve Vests, 25c
Silk Camisoles .45c Ladies' Strap Pcy. Vests, 35c
White Embroidered Under-shirts \$1.40 Ladies' Mohr Under-shirts .90c
SPECIAL: WHITE-DOT MUSLIN BLOUSES .20c each
Men's Blue Chambray Work Shirts .70c Men's Summer Sox; all colours .10c

Bon Marche
WATER STREET ST. JOHNS
June 13, 1911

Job Boots!
BIG VALUES
In American Footwear.



Men's Tan Work Boots,
Good Heavy Soles.
Price: \$3.25 & \$3.75 per pair.



Men's Fine
Dark Tan Laced Boots,
All Fitted with Rubber Heels. Made on Good
Rooney American Last,
\$4.50, 5.00, 5.50 & 6.00 the pair.
Extra Value in each pair.
Mail Orders Receive Prompt Attention.
Special Prices to Wholesale Buyers.

F. Smallwood,
Water Street, The Home of Good Shoes.
aug 15, 11

NEW SUITINGS

in light colours
and weights for
Summer wear.
A splendid variety to select from.
Samples submitted to you on receipt of postal.

John Maunder
TAILOR & CLOTHIER
St. Johns, N.F.

INDESTRUCTIBLE PEARLS

We are now in a position to offer our Patrons a genuine French indestructible Pearl necklace 24" in length with gold filled clasp at \$5.00.
The Pearls are beautifully graduated and have a splendid lustre.
We guarantee these to be excellent value.
T. J. DULEY & CO. LTD.
THE RELIABLE
JEWELERS & OPTICIANS
WATER STREET.

GENTLEMEN:—
THIS IS OUR BARGAIN WEEK TO YOU FOR
Shirts and Caps

and we are showing most exclusive lines with attractive prices. For a short time we are giving a 15 per cent. reduction on above lines, and consequently you can buy a good Shirt or Cap from us from \$1.25 up. See our Striped and Plain Blue English Broad Cloth Shirts, at \$3.50.
E. D. SPURRELL 365 Water Street St. John's.
WM. SPURRELL 210 Duckworth St. Branch: Grand Falls.

"In quoting Books, quote such authors as are usually read; others you may read for your own satisfaction, but not name them."—J. Selden.
BOOKS
YOU READ FOR YOUR OWN SATISFACTION:
The Arms of the Sun, by Lady Dorothy Mills. \$1.50
The White Wilderness, by Geo. Allen, England. \$1.50
Fire Mountains, by Norman Springer. \$1.50
Broken Links, by Gertrude Parsons. \$1.25
Pink Sugar, by O'Donoghue. \$1.50
Sayonara (Good-Bye), by John Paris. \$1.50
Psmith in the City, by P. G. Wodehouse. 75c
The Struggling Saint, by Rafael Sabatini. \$1.25
The Honourable Jim, by Baroness Orczy. \$1.50

S. E. GARLAND
Leading Bookseller & Stationer, 177-9 Water Street.
S.E. 11

Cultivate that
'INDEPENDENT'
habit.

INDEPENDENT CIGARETTES
MILD VIRGINIA
MANUFACTURED BY INDEPENDENT TOBACCO COMPANY LIMITED, ST. JOHN'S, N.F.

Made by the
Independent Tobacco Company, Limited,
ST. JOHN'S.
June 28, 1911

Ex S. S. "ROSALIND," DUE THURSDAY
70 cases ORANGES—Counts 216-282
0 half barrels PEARS.
30 barrels APPLES—Early.
50 boxes APPLES.
BURT & LAWRENCE
11 NEW GOWER STREET.

Lipton's Groceries
New Shipment just received by
GEORGE KNOWLING, Ltd.

Lipton's High Grade English Biscuits
We carry a very large assortment of these Biscuits, and having shipments arriving by every English steamer, are always in a position to fill all requirements, and at our usual low prices. Lipton's Biscuits are always fresh and very free from breakages.
Lipton's Superior Scotch Orange Marmalade
in 1-lb. Glass Jars.
Lipton's Delicious Table Jellies
in 1 Pint Tablets.
Flavours: Raspberry, Strawberry, Lemon, Orange and Vanilla.
Lipton's Essence of Coffee and Chicory
in 5 ounce and 10 ounce Bottles.
LIPTON'S PICKLES
in assorted makes.

George Knowling, Ltd.,
GROCERY DEPARTMENT.
aug 13, 1911

Nfld. Government Railway.

CHANGE OF SCHEDULE—BAY DE VERDE BRANCH.
Commencing Monday, September 1st, train will leave Grate's Cove 8 a.m. Mondays, Wednesdays, Saturdays, arriving Carbonear 11.45 a.m. Leave Carbonear 4.15 p.m., arrive St. John's 9.15 p.m.
Train will leave St. John's 8.45 a.m. Mondays, Wednesdays, Saturdays, arrive Carbonear 2.15 p.m. Leave Carbonear 5.45 p.m., arrive Grate's Cove 8 p.m.

GARDEN PARTY—FERRYLAND—SUNDAY, AUGUST 31st.
Excursion train will leave St. John's 2 p.m. Sunday, August 31st, for Ferryland, to accommodate people patronizing Garden Party to be held by Rev. Father Maher. Train will stop at regular stations en route. Returning, leave Ferryland at 10.30 p.m.

ST. MARY'S AND FORTUNE BAY STEAMSHIP SERVICE.
Passengers leaving St. John's on 8.45 a.m. train Saturday, Aug. 30th, will connect with S. S. SEBAS. TOPOL at Argentina for regular ports in St. Mary's and Fortune Bays.

PLACENTIA BAY STEAMSHIP SERVICE.
Passengers leaving St. John's on 8.45 a.m. train Saturday, Aug. 30th, will connect with S. S. ARGYLE at Argentina for usual ports in Placentia Bay (Mersheen Route).

BONAVISTA BAY STEAMSHIP SERVICE.
Commencing Monday, Sept. 1st, S.S. MALAKOFF will operate in Bonavista Bay only, leaving Port Blandford every Monday and Friday. Freight will be accepted every Thursday, to connect Monday, and every Tuesday to connect Friday.
Passengers leaving St. John's on express train 1 p.m. Sunday, August 31st, will connect with S.S. MALAKOFF, at Port Blandford, for ports in Bonavista Bay.

Nfld. Government Railway.

RED CROSS LINE!

NEW YORK. HALIFAX. ST. JOHN'S.
SCHEDULE OF SAILINGS FOR SEPTEMBER.

From New York at 11 a.m.	Ship	From St. John's at 12 o'clock, noon
August 30th	SILVIA	Sept. 6th
Sept. 6th	ROSALIND	Sept. 13th
Sept. 13th	SILVIA	Sept. 20th
Sept. 20th	ROSALIND	Sept. 27th
Sept. 27th	SILVIA	Oct. 4th

THROUGH RATES QUOTED TO ALL PORTS.
Round trip tickets issued at special rates with six months' stop-over privileges.
BOWLING & COMPANY, 17 Battery Place, New York
General Agents.
G. S. CAMPBELL & CO., HALIFAX, N.S.
HARVEY & CO., LTD., ST. JOHN'S, N.F.L.D.
Agents, Jan 5, 1911

CANADIAN NATIONAL RAILWAYS
TORONTO TO—DETROIT CHICAGO.

TRAVEL BY NATIONAL LINES
"INTERNATIONAL LIMITED."
Leaves Bonaventure Station, Montreal, at 10.00 a.m. Daily
Direct connection from Halifax or North Sydney by
"OCEAN LIMITED."
For Fares, Reservations, etc., apply to
R. H. WEBSTER, General Agent

NOTICE!

EAST BOSTON, MASS.—HALIFAX, N.S.—ST. JOHN'S, N.F.L.D.—NORTH SYDNEY, N.S.
Steel Steamship "SABLE I." will
Leave East Boston 2 p.m. Aug. 28th Sept. 2th
Due Halifax 2 p.m. Aug. 28th Sept. 11th
Leave Halifax 2 p.m. Aug. 29th Sept. 12th
Due St. John's midnight Aug. 31st Sept. 14th
Leave St. John's 2 p.m. Sept. 2nd Sept. 2nd
Due North Sydney 6 a.m. Sept. 4th Sept. 16th
Leave North Sydney 2 p.m. Sept. 4th Sept. 18th
Due Halifax 2 p.m. Sept. 5th Sept. 19th
Leave Halifax 2 p.m. Sept. 6th Sept. 20th
Due East Boston 6 a.m. Sept. 8th Sept. 22nd
Fares on application; reservations now accepted.
Apply **HARVEY & CO., LTD., St. John's, Nfld.**
June 13, 1911

COAL!

We offer at Lowest Prices:
WELSH ANTHRACITE—The finest quality.
BEST WELSH HOUSEHOLD
a Superior grade.
SCOTCH HOUSEHOLD—all Lump
The above free from Slack. Also,
BEST SCREENED NORTH SYDNEY ex vessel.
W. H. HYNES.
aug 25, 1911