

Soil Culture Under the New Dispensation

The Four-fold State of Dry Land Agriculture

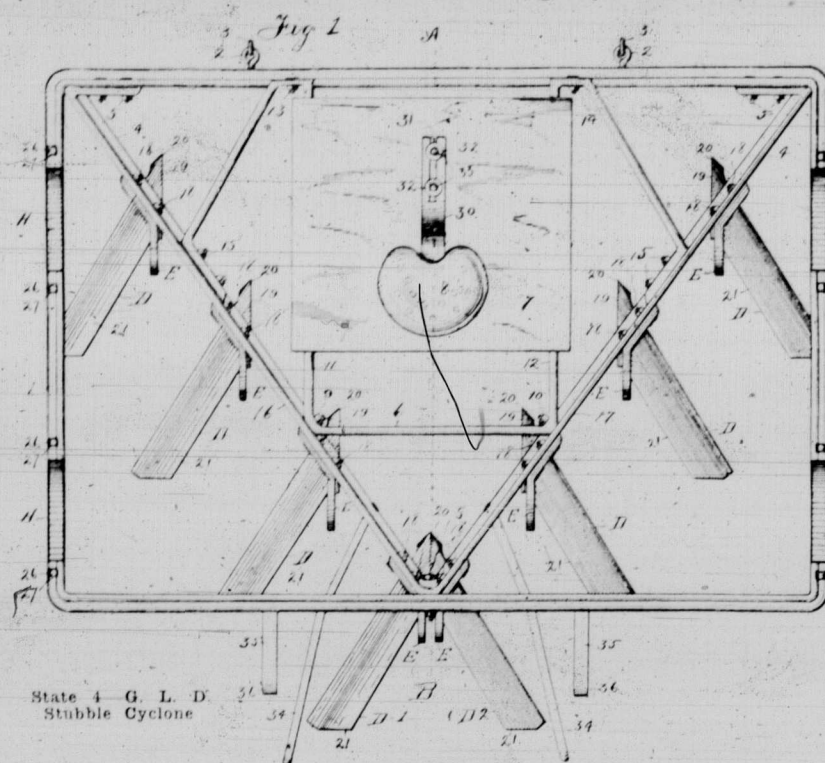
As Recommended
by
DODDS & DETWILER

Good deep plowing is the foundation of our agriculture, namely:

1—Subsoiling with the Gooseneck Subsoil Cultivator to make the land receptive to rain and air without bringing the subsoil to the surface to dry out.

2—The surface treatment of the plowed land for the retention of moisture, and incidentally the destruction of thistles, wild oats, and other weeds; the conservation of this moisture will cause the germination of wild oats, buckwheat, mustard and other foul seeds in the soil. This can be accomplished with less power, and better, with the D. and D. Cyclone Weed Destroyer, Surface Cultivator and Mulcher, not too fine, than with any other tool.

3—After the grain is up and well rooted, put the Professor Shaw Improved Reversible Mulching Harrow over the growing grain. This harrow is made very light for the purpose, and possesses 192 round steel teeth 5-16 with diamond points; is 16 1/2 feet wide, and weighs only 160 lbs.



State 4—G. L. D. Stubble Cyclone

DOMINION OF CANADA—DEPARTMENT OF AGRICULTURE
Dominion-Experimental Farms—J. H. Girdale, B.Agr., Director
W. C. McKILLICAN, B.S.A., Supt. Experimental Farm for Manitoba,
MILTON J. TINLINE, B.S.A., Asst. Supt. Brandon, Man., June 13th, 1914.
MESSRS. DODDS & DETWILER,
Leland Hotel, Winnipeg.
Dear Sirs:—Will you please supply the Experimental Farm with one of your Cyclone Weed Destroyers, send the 12-ft. size. Please send in the bill in triplicate for the price of same. Yours truly, W. C. McKILLICAN, Superintendent.
(This order speaks for itself, and is the result of the working of the machine on the experimental plots at Brandon last season.—D. & D.)

This process will destroy millions of young weed plants, keep the surface from cracking, break up the crust after rain, and form a mulch to keep the land from drying out from the powerful evaporation on the Western plains. The increase of yield on one day's work of this harrow will pay for itself. The farmer who follows out this system can count on an average crop with but scant rainfall during the growing season.

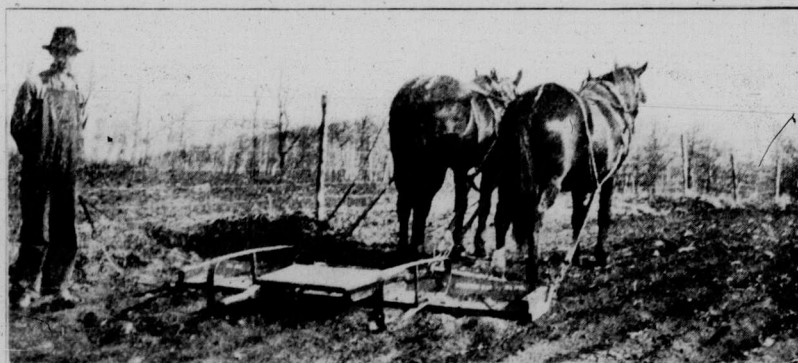
4—The farmer is now up to harvesting operation, and in order that some preparation be made for the next year's fallow, find out all that is to be known about the G. L. D. Stubble Cyclone. This machine will follow the binder and uproot the stubble, cut off all young Russian, Canada and sow thistle and other weed growth and grass good, bad and quack or couch grass, and blanket the land so it will not dry out until the farmer is ready to fall plow, or plow the summerfallow after seeding, when the weed growth has started.

**This System of Soil Culture is
Blanketed with Patents
Trade Marks and
Copyrights**



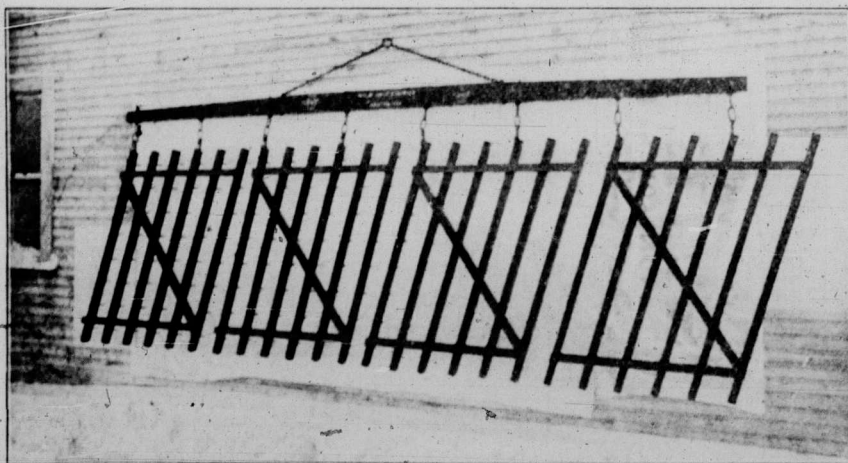
State 1—D & D Gooseneck

Work the Desert out of the subsoil, and the desert winds will not affect the ripening grain so badly



State 2—D & D Cyclone Weed Destroyer, 1914 Model

Stop the Leaks! While irrigating in California, men are placed on the land with shovels to stop up the gopher and badger holes, that the precious water be equally distributed in the soil and not wasted. The leakage in our soil is through ducts upward, and the only way to arrest evaporation and prevent the escape and waste of valuable FROST and RAIN MOISTURE, is to blanket the surface by means of the Cyclone and cut out the weeds. (See illustration).



State 3—Prof. Shaw's Reversible Mulching Harrow



DODDS & DETWILER Address: The Leland Hotel Winnipeg, Man.

Factory: Corner Tecumseh and Ross, Arlington Car, William Ave. W.

WRITE FOR FREE LITERATURE ON DRY LAND FARMING