

INCORPORATED 1886 **TORONTO** HON. G. W. ALLAN PRESIDENT

CONSERVATORY OF MUSIC

COR. YONGE ST. & WILTON AVE.

ALL BRANCHES OF MUSIC TAUGHT from Rudiments to Graduation

Graduating Courses; Scholarships; Medals.

H. N. SHAW, B.A., Principal Elocution School.

NEW CALENDAR of 132 pages, giving particulars of all departments, mailed free.

EDWARD FISHER, Musical Director.

Trinity College School, PORT HOPE.

Trinity Term will begin

On **WEDNESDAY, APRIL 18th, 1894.**

Forms of application for admission and copies of the Calendar may be obtained from the

REV. DR. BETHUNE, Head Master.

Hellmuth Ladies College

LONDON, ONTARIO.

Church School for Young Ladies and Girls

Under the distinguished patronage of

H. R. H. Princess Louise and Her Excellency The Countess of Aberdeen.

Next Term begins March 21st.

Diplomas awarded in the following courses: Academic, Music, Art and Elocution.

For circular and full information address

REV. E. N. ENGLISH, M.A. Principal.

DEPOT OF THE Church Extension Association,

418 QUEEN ST. WEST, TORONTO.

Also at 135 James st. north, Hamilton, Ont.

Open daily from 9.30 a.m. to 6.00 p.m., Saturdays 9 to 9.30.

Surpluses made to order from \$3.00 up. Garments for Men, Women and Children, New and Second-hand, at Low Prices.

Also Books, Publications, Sacred Pictures and Photographs, Fancy Work, &c.

THE CHURCH OF ENGLAND DAY SCHOOLS FOR GIRLS,

53 Beverley Street, Toronto.

Under the management of the Sisters of the Church.

Next Term Commences Jan. 8th.

Fees—In Ottawa and Hamilton, \$5 for English and French; ditto in Toronto, \$3.

Music, Dancing, and German or Latin extra.

Martin Cleworth

Member of Leading English Theatrical and Entertainment Companies,

Is prepared to receive private pupils or organize classes for every branch of

Stage & Platform Instruction

Amateur Societies Coached on Special Terms.

Open for Entertainment Engagements. "Sun Light & Shadow," a two hours' refined, varied and complete entertainment, by Martin and Ada G. Cleworth. Highly suitable for church, schools, &c., &c. References from clergy, secretaries, &c.

75 Yonge Street—Room 33, cor. King and Yonge.

KIDD & CO.,

Room 15. 91-2 Adelaide St. E., Toronto.

AUDITORS AND ASSIGNEES.

Contracts made with firms to post or audit books by week, month, or otherwise.

Bishop Bethune College

OSHAWA, Ont.

UNDER THE CHARGE OF

The Sisters of St. John the Divine.

Visitor, the Lord Bishop of Toronto.

For terms and particulars apply to THE SISTER IN CHARGE, or to

The Sisters of St. John the Divine, Major Street, TORONTO.

Michaelmas Term. September 7th, 1893.

Bishop Strachan School FOR GIRLS.

ESTABLISHED 1867.

PREPARES, if desired, for the Departmental Examinations. Fees for resident pupils from \$250 to \$350 per annum, with an entrance fee of \$12. Discount for sisters, daughters of clergymen, or pupils making yearly payments in advance.

The next Term begins on February 11th, 1894.

Apply for Calendar containing Course of Study, &c., &c., to

MISS GRIER, Lady Principal.

Home School for Little Boys.

CHATHAM, ONTARIO.

Parents or Guardians having little boys, aged from five to twelve, who have been deprived of a mother's care, can secure for them a thorough, cultured Christian training by placing them in Miss Rice's Home School for Little Boys in Chatham, Ont.

The course of instruction the same as in the public schools. Pupils received at any time and charged from time of entrance. Terms reasonable.

References—The Lord Bishop of Huron, Rev. R. McCosh (Rector of Christ Church), Rev. A. Murphy (Rector of Trinity Church), Judge Woods, Dr. Holmes, M. Wilson, Q. C., all of Chatham.

DUFFERIN HOUSE,

TORONTO, ONT.

Miss Dupont's Boarding and Day School for Young Ladies.

ESTABLISHED 1872.

The course of study comprises all the requisites of a thorough English education—Latin, the Foreign Languages, Music, Drawing and Painting. The best masters in the city attend the school, and good resident and foreign governesses. The House is situated in an open and healthy part of the city, with ample ground for recreation, and offers all the comforts of a refined and pleasant home. For terms and circulars apply to MISS DUPONT, 196 John Street.

PARK BROS. 328 Yonge Street Photographers

BANJO.

Thorough Instructor for Parlor and Stage.

RICHARDS' BANJO SCHOOL, Cor. Yonge and Gerrard Streets.

GEO. F. SMEDLEY,

Banjo, Guitar and Mandolin Soloist.

Instructor University Banjo and Guitar Club and Mandolin Quartette. Teacher Toronto College of Music, Upper Canada College, Bishop Strachan's School.

Residence—98 Nassau St., or Toronto College of Music.

Guitar, Mandolin and Banjo.

MR. BERT KENNEDY, Teacher. (Telephone 389). Studio—Oddfellow's Building, cor. Yonge and College streets. In studio afternoon and evening.

J. LEWIS BROWNE,

(Organist and Choir-master Bond St. Con. Ch.) Concert Organist

Pupils received in Organ, Piano, Harmony and Instrumentation.

72 SHUTER STREET. Reception hours 3 to 5 p.m. daily.

JONES & WILLIS, Church Furniture Mfrs

ART WORKERS IN Metal, Wood, Stone and Textile Fabrics.

43 GREAT RUSSELL STREET, (Opposite the British Museum.) LONDON, W.C. AND EDMUND STREET, BIRMINGHAM, ENGLAND. Concert St., Bold St., LIVERPOOL.

Church Brass Work.

Eagle and Ball Lecterns, Altar Vases, Ewers, Candelsticks, Altar Desks, Crosses, Vesper Lights, Altar Rails, &c. Chandeliers and Gas Fixtures.

JOHN A. CHADWICK, MANUFACTURER, 136 King St. East, Hamilton, Ont.

HAMILTON STAINED GLASS WORKS

Church and Domestic Stained Glass Of Every Description.

HENRY LONGHURST, 60 King William St., Hamilton.

Ornamental Stained Glass And Wall Paper

Superior Designs At all Prices.

McCAUSLAND & SON

Show Rooms, 72 to 76 King St. West, TORONTO.

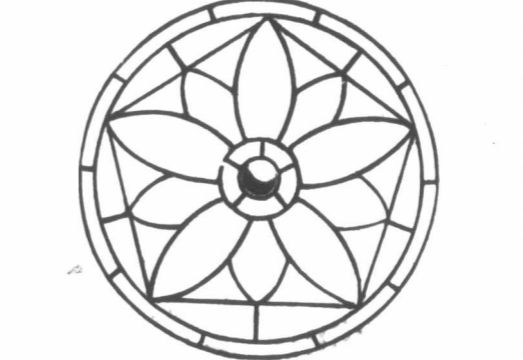
1894 Wall Paper.

Our Showroom at 156 Yonge St. is filled to the ceiling with all the

Novelties for Interior Work,

Kindly call and look at our goods, and get prices before purchasing.

Mullin & Muir, 156 Yonge St., TORONTO.



CHURCH WINDOWS, ECCLESIASTICAL WORK, CATHEDRAL DESIGNS.

HOBBS MANUFACTURING CO'Y, London, Ontario.

MY WIFE CANNOT SEE HOW YOU DO IT AND PAY FREIGHT.

Buy our 2 drawer walnut or oak Improved High Arm Singer sewing machine finely finished, nickel plated, adapted to light and heavy work; guaranteed for 10 Years; with Automatic Bobbin Winder, Self-Threading Cylinder Shuttle, Self-Setting Needle and a complete set of Steel Attachments shipped any where on 30 Day's Trial. No money required in advance. 75,000 now in use. World's Fair Medal awarded machine and attachments. Buy from factory and save dealer's and agent's profits. Cut This Out and send to-day for machine or large free FREE catalogue, testimonials and glimpses of the World's Fair. OXFORD MFG. CO. 312 Wabash Ave. CHICAGO, ILL.

STOLES, PLAIN AND EMBROIDERED, A large assortment ready in stock, from the set of four. T. PRATT & SONS, Clerical Providers, Tavistock street, Covent Garden, London, Eng. Price List free.

CLERICAL COLLARS, IN STRONG LINES, 10s. per doz. Linen faced, is per doz. T. PRATT & SONS, Tavistock street, Covent Garden, London, W.C., Eng.

THE ALEXANEMOS, A NEW CLOAK FOR the Clergy for walking or riding. Send for sketch. T. PRATT & SONS, Clergy Outfitters, Tavistock street, Covent Garden, London, W.C., Eng.

PRIESTS' CLOAKS AND INVERNESS CAPES ready in stock. Price list free. T. PRATT & SONS, Clergy Outfitters, Tavistock st., Covent Garden, London, W. C., Eng.

THE PAMPHERON, A NEAT AND USEFUL substitute for the bag in common use, 6d. and 10s. 6d. T. PRATT & SONS, Clergy Providers, Tavistock st., Covent Garden, London, W. C., Eng.

STAINED GLASS

And Church Furnishings

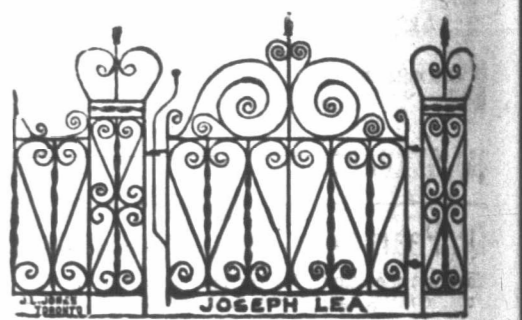
Castle & Son, 20 University St., Montreal

USE Alaska Cream

THE NEW AND ELEGANT COSMETIC for the cure of CHAPPED HANDS, FACE, LIPS And all roughness of the skin. It dries instantly it whitens the skin; it is not greasy or sticky.

PRICE, - - - 25 CENTS.

MADE BY STUART W. JOHNSTON, Toronto, Ont.



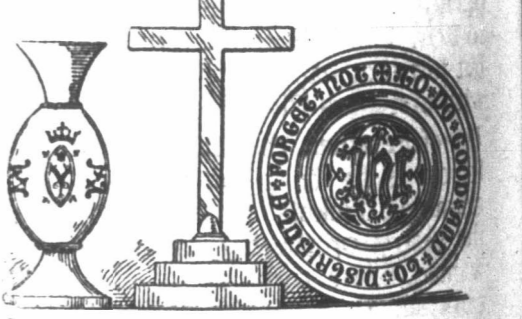
Fence & Ornamental Iron Works

73 Adelaide St. W., Toronto. Formerly of St. Thomas. Manufacturers of Iron Fencing and every Description of Ornamental Iron Work.

Special attention given to architect's work, either by contract or by the hour. Special designs furnished. Catalogues on application.

JOSEPH LEA, Manager.

Church Brass Work.



Memorial Pupils Lecterns, Ewers Gas & Electric Lighting Fixtures, &c.

Designs, workmanship and prices guaranteed satisfactory.

The Keith & Fitzsimons Co., Ltd. 111 King St. W., Toronto. Write for Catalogue.

MEMORIAL STAINED GLASS WINDOWS

N.T. LYON. TORONTO

Vol. 2
E. C. WINDE Wi
Canada Per Buildr
EDEN
14 King S
PRESEN
DESIGNE. A
Pia
The CL
The Hou Charge for b The accomm invited to stating the d Applicat
WANTED young ment. Sole locum tenen Has had exp Apply "E." Toronto.
N
1. The Chu A.D. maps
2. The Tw Dr. C
3. The Silc W. M
4. The Bel ture.
5. The Epi \$1.75.
6. Half Ho gress
7. Religion A. M.
8. The Asc saint; Harri
9. The Gos Our D.D.
10. Holy Mf Yeste D.D.
11. For Her J. A.
12. The Hel and I
JOHN
102