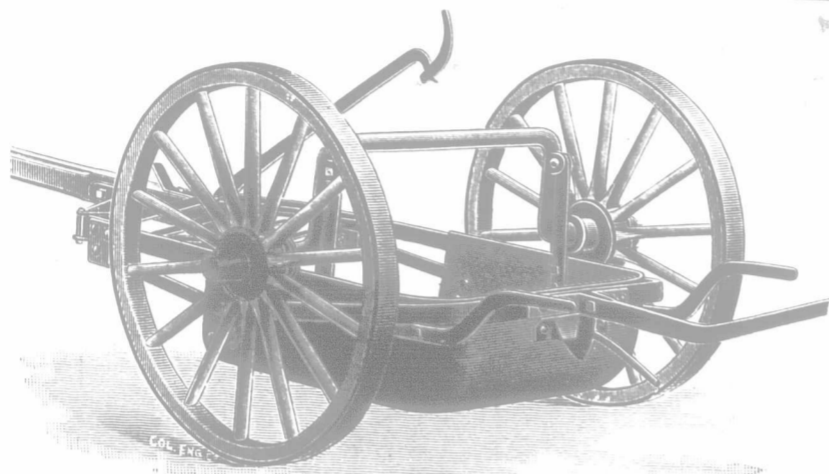


# Municipalities! Contractors! Dealers!

## Make No Mistake in Any of These Goods.



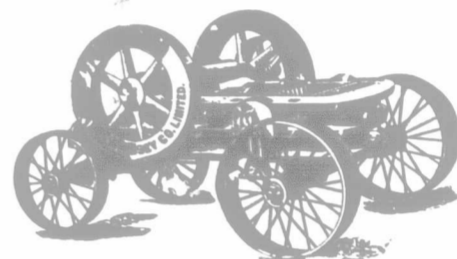
"S. & M." Steel Mould for making Concrete Tile.



Celebrated K. & J. "Columbus" Pressed Bowl Steel Wheelers. Oil-tempered Bowls, Sand-proof Hubs. Sizes, 2 and 3.



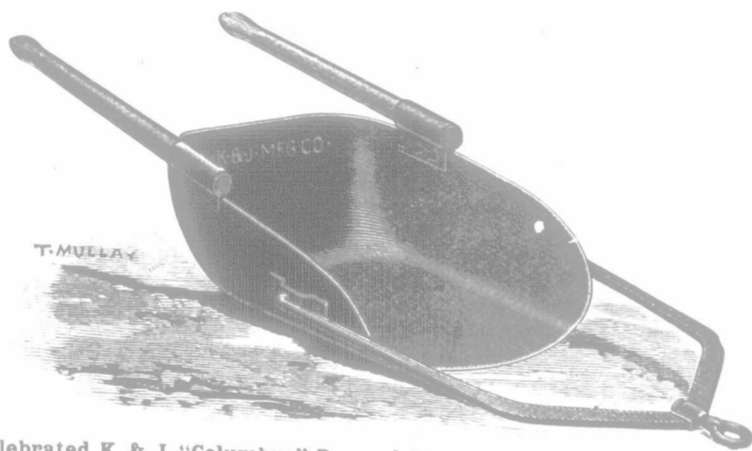
"S. & M." Steel Reversible Road Grader.



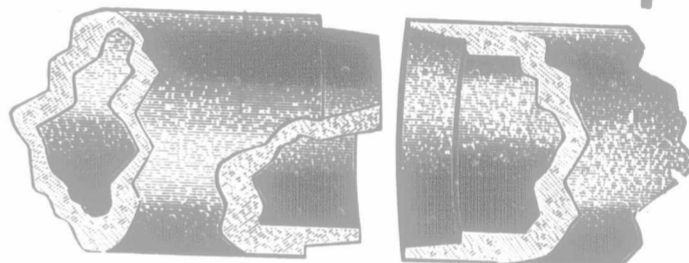
"S. & M." Rock Crusher.



"S. & M." Road Plow.



Celebrated K. & J. "Columbus" Pressed Bowl Steel Drags. Sizes, 1, 2 and 3.



Sectional view of Concrete Tile as manufactured by our Steel Moulds, showing telescopic joint.

### WRITE US

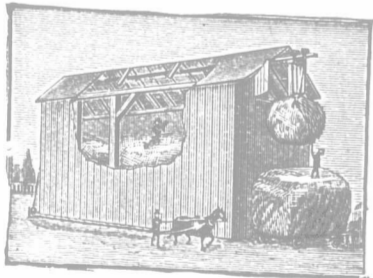
For particulars and prices of these and our other lines of Road-making Machinery.

# SAWYER & MASSEY CO., LIMITED.

HAMILTON, ONTARIO, CANADA.

## BUCHANAN'S (Malleable Improved) PITCHING MACHINE

For unloading hay and all kinds of loose grain.



Unloads on either side of barn floor without changing car. No climbing necessary. Malleable Iron Cars, Steel Forks, Knot Passing Pulleys. Will work on stacks as well as in barns. Satisfaction guaranteed.



### The Common-Sense Sheaf-Lifter

When in connection with Pitching Machine, and the most complete apparatus ever offered to the farmer for pitching sheaves. Sheaves left in place just as they come from the load.

RESPONSIBLE AGENTS WANTED. Agents, Prices and Terms on application to BUCHANAN & CO., Ingersoll, Can.



BEST BECAUSE MADE OF BEST WIRE.

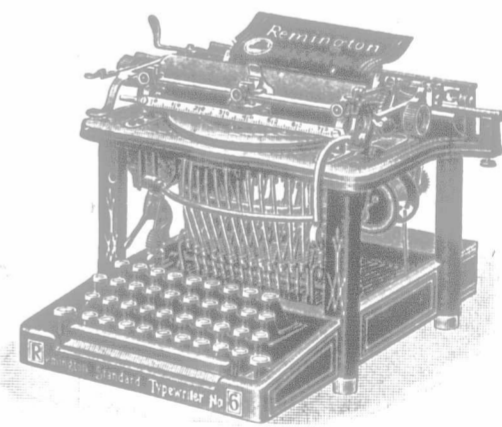
The H. R. LAMB FENCE CO., Ltd., LONDON, ONT.

## SPELTZ

Yields 60 to 70 bushels to the acre. What is it? What is it for? How does it grow? Speltz is a species of wheat. Being comparatively new of introduction, during the past couple of years its habits of growth, yield and climatic conditions have been rigorously watched, WITH THE RESULT THAT IT HAS BEEN FOUND TO BE HIGHLY ADAPTED TO THIS COUNTRY, and may be regarded as a permanent crop for stock feeding. The heads are similar in form to two-rowed barley. It is peculiarly adapted to poor, impoverished soils that are unsuitable for wheat or other grains. Spring frosts do not damage it. The drier the weather the better it thrives. The past season has confirmed the opinion generally held in this grain, that it is one of the best kinds to resist the effects of wet weather. Stocks which have stood out for weeks in the rain were found to be as bright as when built, and the kernel entirely free from injury. It is an immense yielder. In a feeding experiment conducted on the Brandon Experimental Farm in the winter of 1901, Speltz was found to be superior to mixed grain as a feed for fattening steers. It is a magnificent feeding cereal for live-stock of all kinds. Many farmers have spoken to us about its superior value for fattening hogs. Every farmer should try Speltz in 1903. Price—1 bush., 90c.; 3 bush., \$2.50; 10 bush., \$8.00; cotton bags, 17c.; jute bags, 10c. each. Cash with order. For further information regarding this excellent grain, see the "Farmer's Advocate" of Feb. 2nd page 111. Address all orders to

DARCH & HUNTER, Seedsman to the Canadian People, LONDON, ONT.

We publish 5 catalogues, viz. Farm Seeds, Flower and Vegetable Seeds, Bee Supplies, Dairy Supplies, Poultry Supplies. Which do you want? All free.



## Remington Typewriter

Simple? Yes  
Sure? Yes  
Swift? Yes  
Strong? Yes

Remington Typewriter Co.  
6 RICHMOND STREET EAST, TORONTO.  
BRANCHES: LONDON, HAMILTON, OTTAWA.

New Waverly White Oats. Yield 80 bushels white oat from 1 acre. Large white oat; thin hull and immense stooking qualities. Price, \$1.00 per bushel, f.o.b. Also Early Daubeny and New Zealand oats at 50c. per bush. Bags extra. Barred Plymouth Rock cockerels, \$2 each. Shorthorn cattle, both sexes, \$10. R. E. WHITE, Perth P.O. and Sta., C.P.R.