

and that the expense would be no greater and in many cases less.

The Northwestern company are now using the one-coat work on bridges and do not let them get so badly rusted and from everyone whom I have asked, find that is a paying investment and which I believe is the best where trains carry refrigerators.

So far as the rigging, tools and methods, every one has his own way of doing this, which he probably thinks is the best. Perhaps Mr. De Stabler, at the Cincinnati convention of last year, gave as good a description of tools and methods as anyone could wish for

DISSOLUTION OF SEWER PIPE TRUST.

The Clayworker says that the agreement which has existed for three years between the sewer pipe manufacturers of the United States has been dissolved, and the plants will now be operated independent of any combine or agreement. This was brought about by a movement which had been set on foot in New York to investigate what was known as the "sewer pipe trust." The attorney for the manufacturers advised them that their "agree-

Portland Cement

Monarch Brand



Highest quality—guaranteed to fulfill the requirements of specifications for Portland Cement approved of by the Canadian and American Societies of Civil Engineers.

Prompt shipments from mill or stock at Fort William and Port Arthur.

THE LAKEFIELD PORTLAND CEMENT CO., LIMITED
LAKEFIELD, ONT.

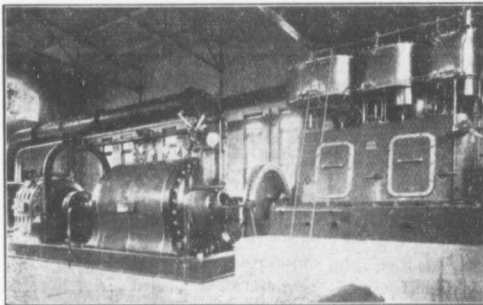


"Lehigh" Portland Cement

Capacity 20,000 Barrels Per Day.

The "Lehigh Portland Cement Company, Limited," are also now building a plant at Belleville, Ont., of 750,000 barrels annual capacity. Until this plant is completed all orders can be shipped from the United States. For prices, etc., address—

THORN CEMENT CO. - Buffalo, N. Y.
SALES AGENTS FOR CANADA



Six Stage Turbine Pump, Electric Motor and High Speed Steam Engine. Built for the Montreal Water and Power Co., to do 4500 Imperial gallons a minute, against 300 feet head. Overall Eff. 70 per cent.

PATENT TURBINE PUMPS

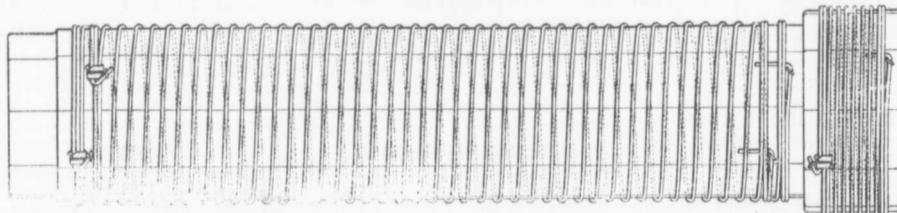
KORTUNG TWO CYCLE GAS ENGINES,
GRAVITY AND PRESSURE FILTERS,
WATER SOFTENING APPARATUS,
ELECTRICAL MACHINES.

— BUILT BY —

MATHER & PLATT, LIMITED
MANCHESTER, ENG.

CANADIAN AGENTS:

Drummond, McGall & Co., Montreal



The Dominion Wire Wound Wood Water Pipe

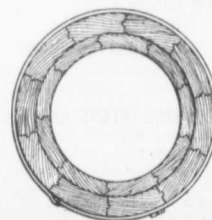
Showing special method of winding with two independent parallel wires. The great advantage of this is, that in event of one wire becoming damaged the pipe still retains a factor of safety of 2.5.

Made only by

THE DOMINION WOOD PIPE CO., LIMITED
NEW WESTMINSTER, B. C.

Also Manufacturers of Continuous Stave Pipe for Irrigation and Power Purposes.

WRITE FOR CATALOGUE.



End view of Pipe and Coupling.