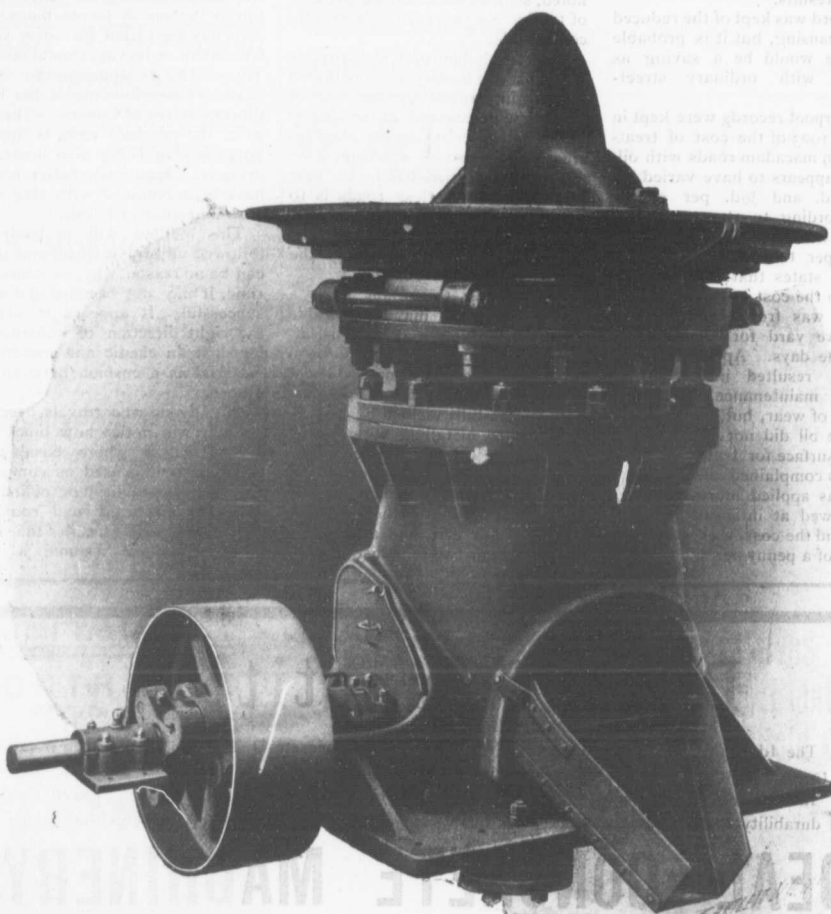


GATES "K" BREAKER



Gates Style "K" Gyrotory Breaker has greater capacity and consumes less power per ton of rock broken than any other breaker ever built. See Bulletin 1916.

CONTRACTORS' PLANT

"Ingersoll" Air Compressors and Rock Drills; "Lidgerwood" Hoisting Engines and Ballast Unloaders;
"Gates" Rock Breakers; Allis-Chalmers Steam Shovels; "Bullock" Electric Motors and Generators.

ALLIS-CHALMERS-BULLOCK LIMITED

Head Office and Works: MONTREAL

District
Offices:

MONTREAL: Sovereign Bank Bldg.
NEW GLASGOW: N.S. Telephone Bldg.
WINNIPEG: Canada Life Bldg.

TORONTO: McKinnon Bldg.
NELSON: Josephine St.
VANCOUVER: 416 Seymour St.