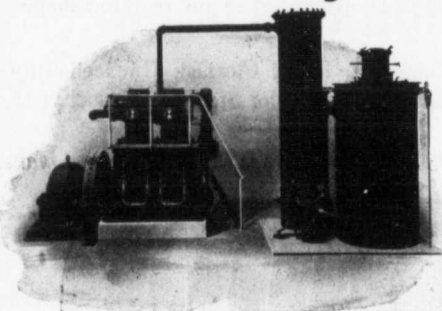


**Heavy Duty  
Goldie  
Corliss  
STEAM ENGINES**

Illustration shows the Engine Room of the SUPERIOR PORTLAND CEMENT CO. AT ORANGEVILLE, ONT., equipped with one pair of CROSS COMPOUND GOLDIE CORLISS ENGINES, 20 and 40x42, Rope Drive.

**THE GOLDIE & MCCULLOCH CO., LIMITED**  
**GALT, ONTARIO, CANADA**  
 WESTERN BRANCH 248 McDermott Ave., Winnipeg, Man.  
 QUEBEC AGENTS Ross & Greig, Montreal, Que.  
 B. C. SELLING AGENTS Robt. Hamilton & Co., Vancouver, B.C.

**THE WARREN GAS POWER PLANT**  
 Combines in the Greatest Possible Degree  
**Economy and Reliability**



OUR SELLING PLAN IS BASED ON THE FACT THAT EVERY PLANT WE INSTAL IS TO GIVE SATISFACTORY AND CONTINUOUS SERVICE.

**IF IT FAILS, WE BEAR ALL LOSS**

The WARREN has been thoroughly tested. Over 5,000 h.p. can be seen within a day's travel of Toronto, each plant doing all it was sold to do.

WRITE US for literature describing these plants in detail and ask for information regarding our SELLING POLICY and liberal guarantee.

Warren Vertical Automatic Gas Engine and Suction Gas Producer. Double and Triple Cylinder Types up to 300 h.p.

Manufactured by

**STRUTHERS-WELLS COMPANY, Warren, Pa., U.S.A.**

**W. H. OLIVER & CO.**

Exclusive Canadian Sales Agents

McKinnon Building, Toronto