

*Oertel: Causes of Death.*

diate practical value, its relation to the liabilities and obligations of State, municipalities, and employers to the individual. They affect the individual's rights in the community, his rights towards pensions, insurances, etc. They may show how cer-

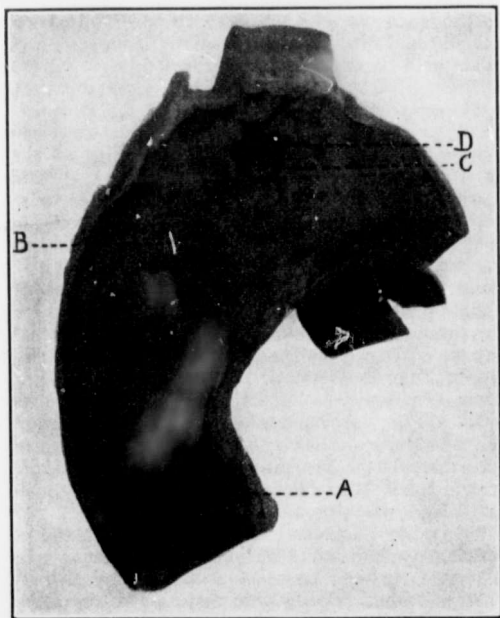


FIG. 1.—*A*, aortic cusps; *B*, principal seat of aortitis; *C*, ulceration; *D*, perforation.

tain environments either produce or materially influence the course of a disease. In other words, an exact determination of the genesis of the cause of death, or better, the natural history of a disease,