

# EATON-MADE *Acme* CORSETS

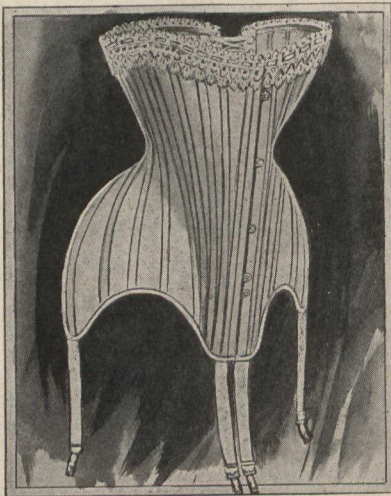
Newest Spring Styles Introduced to Our Mail Order Customers.

A SHAPE FOR EVERY FIGURE—A PRICE FOR EVERY PURSE.

Years of unceasing labor and inventive skill have resulted in our producing in *Acme* Corsets many novel and useful features seldom found in moderately priced makes. Features that **accomplish** something, and appeal to the common sense of customers.

Although many of the latest American styles are found in *Acme* Corsets, we have realized that fads and exaggerations are quickly giving way to nature's purer lines and curves. The feminine form is not intended to be crushed and manipulated into ridiculous shapes. It can be **trained** and **developed** into lines of symmetry and fashion. Hence, expert corsetieres, in the designing, cutting and fitting, see to it that the *Acme* follows nature's original and most beautiful lines, yet leaves the wearer her own personality. Furthermore, no matter what the figure, there is an *Acme* Corset to fit it, and fit it **perfectly**, and comfortably. Corsets with short or long, graceful lines, high or low busts, or increased lengths below the waist—all of these, in every size, are found in the celebrated *Acme* makes.

OUR MAIL ORDER SERVICE INSURES  
PROMPT DELIVERY.



CR2-148. **Corset**, straight front, long dip hip, 5 hook Paris clasp, white batiste, steel filled, lace and ribbon trimmed, hose supporters front and side, suitable for tall and medium figures, sizes 18 to 30. .95



CR2-124. **Corset**, straight front, fine sateen, filled with steel wire, long hip, hose supporters attached, drab and white, sizes 18 to 26. .85  
CR2-144. Same style as CR2-124, only fine batiste. .75

The new designs in *Acme* Corsets are now ready, and every pair is absolutely perfect fitting.  
The Moderate Prices are—35c, 50c, 75c, 95c.

We carry also the following lines in all styles and sizes: Kabo, 1.25 to 6.00; R. & G., 1.25 to 3.50; Nemo, 3.50 and 6.00; Binner, 8.00, 10.00 and 13.00; La Camille, 1.25 to 6.00; La Adria, 1.25 to 4.75; Ivy, 1.25 to 3.75; W. B., 1.25 to 3.75; P. N., 1.25 to 3.25; La Corybee, 6.00 to 7.50; B. & C., 1.00; Smart Set, 6.00 to 15.00; F. P., 1.25 to 3.00.

*Acme* Corsets, when finished, retain **permanently** their original shape and graceful curves, since none but high-class imported jeans, coutils, sateens and batistes, that have been thoroughly tested for their strength and durability, are used in the making, and the fillings are of the best tempered corset steel procurable. Skilled operators have attended to the finish. Every pair of *Acme* Corsets is trimmed with pretty Valenciennes lace and satin ribbon beading, and, from the original design to the finishing stitches, everything has been carefully examined and has measured up to the **EATON** standard. By buying the raw materials and selling the finished corset in such large quantities, and by avoiding all middleman's profits, on *Acme* Corsets you save much of what you were previously paying, and **they are guaranteed to give entire satisfaction** or your money refunded.

Read our Liberal Guarantee and Free Delivery Offer  
in new Spring and Summer Catalogue.



CR2-154. **Corset**, made of fine, light weight batiste, steel filled, girdle top, finished with lace and ribbon, long below waist and over hip, for slight and medium figures, white only, sizes 18 to 24. .95

Wear *Acme* Corsets Once and You'll Wear Them Always.

ACME CORSETS COME  
DIRECT FROM THE MAKER  
...TO YOU...

THE **T. EATON CO.** LIMITED  
TORONTO, CANADA.

If Acme Corsets are in any way  
unsatisfactory, we will ex-  
change or refund your money.