

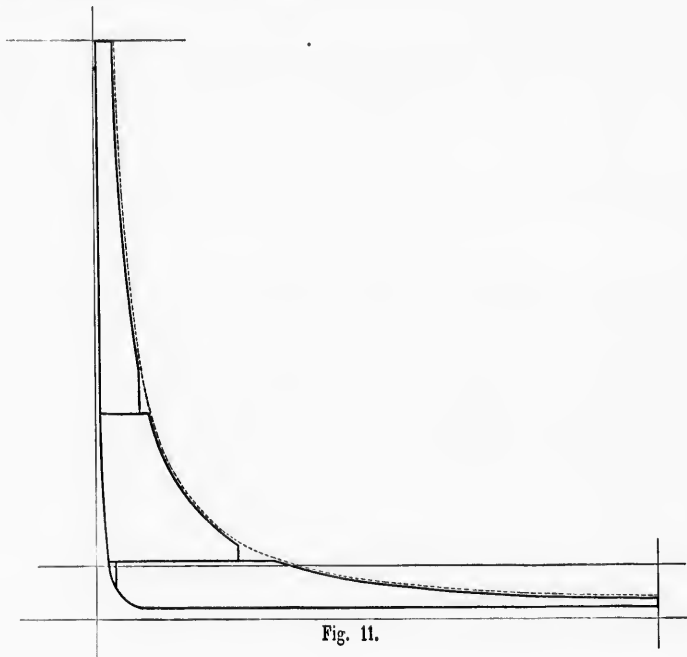
The mean effective pressures of these diagrams are as follows :

High cylinder.....	65.65 lbs.
Intermediate cylinder	24.46 lbs.
Low cylinder	7.55 lbs.

Or, referred to the low cylinder, as follows :

High cylinder	4.96 lbs.
Intermediate cylinder	6.10 lbs.
Low cylinder	7.55 lbs.
Total	18.61 lbs.

These figures show a progressive increase of indicated work in each cylinder from the high to the low.



A more even division of work would be obtained by decreasing the range of pressure in the low cylinder, and increasing the range in the high. It has already been suggested that because of the relatively larger area of surface of the low cylinder a modification of this kind would probably reduce the total con-