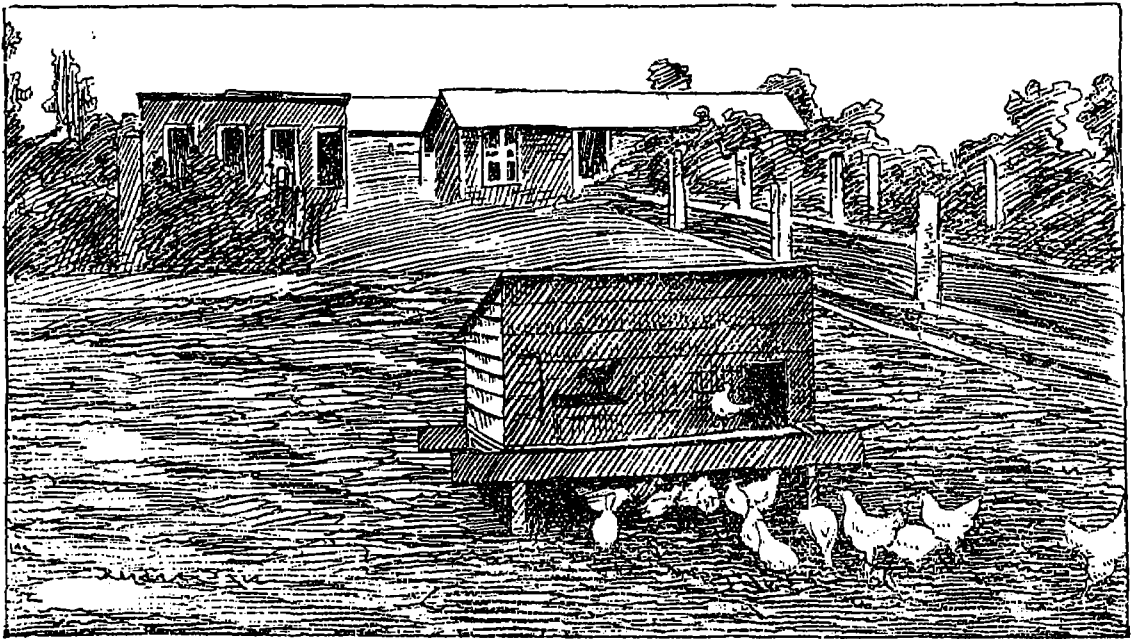


Weaning coops.



Open air roosting coops.

coops are made of any kind of cheap lumber or siding.

The weaning coop is two and one-half by four feet on ground plan and is three feet high in front, two feet at the back. The front is covered with one inch mesh-wire netting with door in centre.

The roof is made of matched fencing, well painted. They are provided with board floors. These floors can be made separate from the coop and thus facilitate cleaning. Litter should always be kept in the coops for nesting material which should be changed frequently.