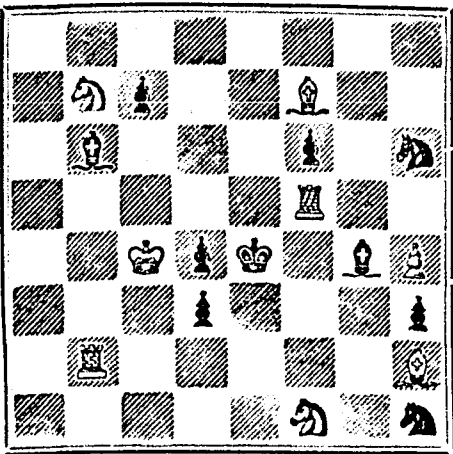


PROBLEM No. 321.

By R. Ormond, Newcastle-on-Tyne.

BLACK.



WHITE.

White to play and mate in three moves.

GAME 418TH.

CHESS IN ST. LOUIS

Third game in the Mackenzie-Judd match; played Feb'y. 19 and 21, 1881. Taken, with the notes from the Globe-Democrat.

White. (Mr. Judd.) Black. (Mr. Mackenzie.)

(Scotch Gambit.)

- 1. P to K4 2. P to K4
3. Kt to K B3 2. Kt to Q B3
3. P to Q4 3. P takes P
4. Kt takes P 4. B to B4
5. B to K3 5. Q to K B3
6. P to Q B3 6. Kt to K2
7. B to Q Kt5 (a) 7. Castles
8. Castles 8. P to Q3
9. Kt takes Kt 9. P takes Kt
10. B takes B 10. P takes K B
11. B to Q4 11. Q to Kt3
12. P to K B4 12. B to K Kt5 (b)
13. Q to Ksq 13. P to K B4
14. P to K5 14. K R to Ksq
15. Q to K Kt3 15. P to Q B4
16. B to K B2 16. P takes P
17. P takes P 17. Kt to Q B3
18. R to Ksq 18. Q R to Qsq
19. Kt to Q R3 19. Q R to Q4
20. Kt takes P 20. Q R takes P
21. P to K R3 (c) 21. B to K7
22. Q takes Q 22. P takes Q
23. P to Q R4 23. P to K B5
24. P to Q Kt4 24. P takes P
25. P takes P (d) 25. Kt takes P
26. K R to Q Kt5 26. P to Q R4
27. B to Q Kt6 27. B to Q6
28. K R to Qsq 28. B takes Kt
29. P takes B 29. R takes P
30. B takes P 30. Kt to Q B7
31. R to K2 31. Kt to K6
32. K R to Q Rsq 32. R to Q Rsq
33. K to B2 33. P to K Kt4
34. B to Q2 34. R takes R
35. R takes R 35. Kt to B4
36. R to R5 36. R takes Kt
37. B takes R 37. K to B2
38. B to Q2 38. K to Kt3
39. B to R5 39. Kt to K6
40. B to Q B7 40. K to K B4
41. K to B3 41. Kt to K R4
42. P to Kt4 (ch) 42. P takes Pen passant
43. B takes P 43. Kt to K B5 (c)
44. P to R4 44. P to Kt5 (cb)
45. K to K3 45. Kt to Q4 (cb)
46. K to K B2 46. K to K5
47. B to Q6 47. Kt to K6
48. P to K5 48. Kt to K B4
49. B to K B8 (f) 49. P to K Kt6 (ch) (g)
50. K to Kt5 50. K to B6
51. B takes P 51. Kt takes B
52. P to R6 52. Kt to B4
53. P to R7 53. Kt to Q5
54. P to Q R8 54. Kt to K7 (ch)
55. K to Bsq 55. P to Kt7 (ch)
56. K to Ksq 56. P to Kt8 (ch)
57. K to Q2 57. Q to B8 (ch)
58. Kt to Q3 58. Kt to B5 (ch)
59. K to Q4 59. Q to Q R8 (ch)

White resigns.

NOTES.

- (a) Somewhat of a novelty in the Scotch Gambit...
(b) It is evident that capturing the K P would cost Black a piece.
(c) We look upon this as an error. Mr. Judd ought instead to have taken R with R, and then played R to K sq.
(d) Here, again, White plays feebly. Kt to Q4 is far preferable to the move in the text.
(e) Some of the gentlemen looking on were of the opinion that Black had a simple win by now taking B with Kt. Whether this be so or not we are not prepared to say.
(f) A tempting move, as it threatens the capture of the Kt P, when, should Black re-take, it will be impossible for him to prevent the white pawn from queening.
(g) The coupe juste. Black, we believe, must now win, let White play as he may.

SOLUTIONS.

Solution of Problem No. 319.

- 1. Kt to K Kt6 1. Any
2. Mates accordingly

Solution of Problem for Young Players No 317

In this problem there should be a B P at Black's Q Kt4 instead Q Kt3.

WHITE. BLACK.

- 1. P to Q R6 1. Any
2. Mates too.

PROBLEM FOR YOUNG PLAYERS, No. 318.

White. Black.

- K at Q R4 K at Q R8
R at K R2 R at K Kt8
Kt at Q4

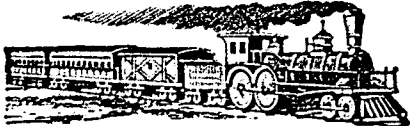
White to play and mate in three moves.

Burdock BLOOD BITTERS



Private Medical Dispensary.

(Established 1860), 25 GOULD STREET, TORONTO, ONT. Dr. Andrews' Purificator, Dr. Andrews' Female Pills, and all of Dr. A.'s celebrated remedies for private diseases, can be obtained at the Dispensary...



Q. M. O. AND O. RAILWAY.

Change of Time.

COMMENCING ON Thursday, Dec. 23rd, 1880.

Table with columns: MIXED, MAIL, EXPRESS. Lists train schedules for Hochelaga, Quebec, St. Jerome, and Joliette.

British American BANK NOTE COMPANY, MONTREAL.

Incorporated by Letters Patent. Capital \$100,000.

General Engravers & Printers

Bank Notes, Bonds, Postage, Bill & Law Stamps, Revenue Stamps, Bills of Exchange, DRAFTS, DEPOSIT RECEIPTS, Promissory Notes, &c., &c., Executed in the Best Style of Steel Plate Engraving. Portraits a Specialty. G. B. BURLAND, President & Manager.

Mr. J. H. BATES, Newspapers Advertising Agent, 41 PARK ROW, Times Building, NEW YORK, is authorized to contract for advertisements in the CANADIAN ILLUSTRATED NEWS at our BEST RATES.

\$5 to \$20 per day at home. Samples worth \$5 free. Address STINSON & CO., Portland, Maine.



PROF. BARON'S COMPLETE INSTRUCTOR

SOCIETY DANCES OF AMERICA

All the Figures of the German and every New and Fashionable Waltz, Round or Square Dance known in Europe or America. The Author of this elegant Book, just published, is one of the most celebrated Teachers of Dancing in this country, and has made this Book so simple and complete in every particular that any child can, by reading it carefully, become an expert in Dancing without the aid of a Teacher...

"NIL DESPERANDUM"

CRAY'S SPECIFIC MEDICINE

TRADE MARK. The Great English TRADE MARK.

Remedy. An unfailing cure for Seminal Weakness, Spermatorrhea, Impotency, and all Diseases that follow as a consequence of Self-Abuse; as loss of Memory, Universal Lassitude, Dimness of Vision, Premature Old Age, and many other Diseases that lead to Insanity or Consumption and a Premature Grave.

Before Taking Pain in the Back. After Taking Dimness of Vision. Premature Old Age, and many other Diseases that lead to Insanity or Consumption and a Premature Grave. Full particulars in our pamphlet, which we desire to send free by mail to every one.

50 Gold, Chromo, Marble, Snowflake, Wreath, Scroll, Motto, &c. Cards, with name on all 10c. Agent's complete outfit, 60 samples 10c. Heavy gold ring for cub of 10 names. Globe Card Co., Northford, Conn.

50 ELEGANT NEW STYLE CARDS, Gilt Fringes Chromo, Fan, Ivy Wreath, Gilt Vase of Roses, &c. Do two alike, name on, 10c., by return mail. Agent's outfit, 10c. Card Mills, Northford, Ct.

50 All Gold, Chromo and Lithograph Cards, (No 2, 3, 4, 5, 6, 7, 8, 9, 10, 11, 12, 13, 14, 15, 16, 17, 18, 19, 20, 21, 22, 23, 24, 25, 26, 27, 28, 29, 30, 31, 32, 33, 34, 35, 36, 37, 38, 39, 40, 41, 42, 43, 44, 45, 46, 47, 48, 49, 50) With Name, 10c. 35 Filtration Cards, 10c. Game of Authors, 15c. Autograph Album, 20c. All 50c. Clinton Bros., Clintonville, Conn.

NOTICE TO PHOTOGRAPHERS.

One of the oldest established stands in the city to let furnished.

Including Lenses, Cameras and all necessary apparatus, together with ten thousand negatives, furniture, sample frames, show cases, &c. Located in the best business centre of the city Terms very moderate. Apply to

BURLAND LITHOGRAPHIC CO.

THE BURLAND LITHOGRAPHIC COMPANY (LIMITED)

CAPITAL \$200,000, GENERAL

Engravers, Lithographers, Printers

AND PUBLISHERS,

3, 5, 7, 9 & 11 BLEURY STREET,

MONTREAL.

THIS ESTABLISHMENT has a capital equal to all the other Lithographic firms in the country, and is the largest and most complete Establishment of the kind in the Dominion of Canada, possessing all the latest improvements in machinery and appliances, comprising:— 12 POWER PRESSES 1 PATENT LABEL GLOSSING MACHINE. 1 STEAM POWER ELECTRIC MACHINE. 4 PHOTOGRAPHING MACHINES. 2 PHOTO-ENGRAVING MACHINES. ALSO CUTTING, PERFORATING, NUMBERING, EMBOSSED, COPPER PLATE PRINTING and all other Machinery required in a first class business.

AND AT MODERATE PRICES

PHOTO-ENGRAVING and LITHOGRAPHING from pen and ink drawings a SPECIALTY. The Company are also Proprietors and Publishers of the

CANADIAN ILLUSTRATED NEWS, L'OPINION PUBLIQUE, and SCIENTIFIC CANADIAN.

A large staff of Artists, Engravers, and Skilled Workmen in every Department. Orders by mail attended to with Punctuality; and prices the same as if given personally.

G. B. BURLAND, MANAGER.

The Scientific Canadian

MECHANICS' MAGAZINE AND PATENT OFFICE RECORD A MONTHLY JOURNAL

Devoted to the advancement and diffusion of Practical Science, and the Education of Mechanics.

THE ONLY SCIENTIFIC AND MECHANICAL PAPER PUBLISHED IN THE DOMINION.

PUBLISHED BY THE BURLAND LITHOGRAPHIC CO.

OFFICES OF PUBLICATION, 5 and 7 Bleury Street, Montreal.

G. B. BURLAND General Manager.

TERMS: One copy, one year, including postage... \$2.00 One copy, six months, including postage... 1.10 Subscriptions to be paid in ADVANCE.

The following are our advertising rates:—For one monthly insertion, 10 cts. per line; for three months, 2 cts. per line; for six months, 8 cts. per line; for one year, 7 cts. per line; one page of illustration, including one column description, \$30; half-page of illustration, including half column description, \$20; quarter-page of illustration, including quarter column description, \$10.

10 per cent. off on cash payments.

INVENTIONS AND MACHINERY, &c., or other matter of an original, useful, and instructive character, and suitable for subject matter in the columns of the MAGAZINE, and not as an advertisement, will be illustrated at very reduced rates.

REMITTING MONEY.—All remittances of money should be in the form of postal-orders. When these are not available, send money by registered letters, checks or drafts, payable to our order. We can only undertake to become responsible for money when sent in either of the above ways.

This journal is the only Scientific and Mechanical Monthly published in Canada, and its value as an advertising medium for all matter connected with our Manufactories, Foundries, and Machine Shops, and particularly to Inventors, is therefore apparent.

50 All Lithographed Chromo Cards, no 2 alike, 10c. Apts. big Outfit, 10c. GLOBE CARD CO., Northford, Ct.

70 LATEST Styles of Photograph. Gilt-edge Chromo, Imported Bevels, Embossed & Pictorial Sample Cards, 15c. 50 STYLE'S Chromos in beautiful colours, name neatly printed, 10c. 14 Packs for \$1.00 Caxton Printing Co., Northford, Ct.

50 Cards, no two alike, name on, 10c., or 25 Styles Love Cards, 10c. postpaid. J. B. Husted, Nassau, N.Y.

50 TORTOISE, Scroll, Wreath, Chromo, Motto and Floral Cards, 10c. U. S. Card Co., Northford, Ct.

25 New and Beautiful Japanese, Rose Bud, Trans-parent, Comic and Blue Bird Cards, with name on all, 10c. Twelve packs for one dollar. Agent's complete outfit, 10c. Sample of Magic Cold Water Pen (writes without ink), 5c. Agents wanted. Queen City Card Works, Toronto.

CONTRACTS FOR ADVERTISING IN THE Canadian Illustrated News MAY BE MADE AT OUR LOWEST RATES WITH MR. E. DUNCAN SNIFFIN, ASTOR NEW YORK, HOUSE OFFICES

THE COOK'S FRIEND BAKING POWDER

Has become HOUSEHOLD WORD in the land, and is a HOUSEHOLD NECESSITY

in every family where Economy and Health are studied. It is used for raising all kinds of Bread, Rolls, Pastry, Cakes, Griddle Cakes, &c., &c., and a small quantity used in Pie Crust, Puddings, or other Pastry, will save half the usual shortening, and make the food more digestible.

THE COOK'S FRIEND

SAVES TIME. IT SAVES TEMPER. IT SAVES MONEY.

For sale by storekeepers throughout the Dominion and wholesale by the manufacturer.

W. D. McLAREN, UNION MILLS, 19-59-369 55 College Street.

THIS PAPER MAY BE FOUND ON FILE AT GEO. F. ROVELL & CO'S Newspaper Advertising Bureau (10 SPRUCE STREET), WHICH ADVERTISING CONTRACTS may be made for it in NEW YORK.