

around the purse, and, after the plain row, crochet in single crochet one more round with a bead in each stitch, and upon this another round of single crochet without beads. At this point the pattern is begun and is worked upward from left to right, counting the spaces of pattern which represent plain stitches, the beads being indicated by the dots. There are upon each side four complete figures with the smaller ones between. These are repeated until there are also four complete rows in length of purse, and may be continued farther if longer

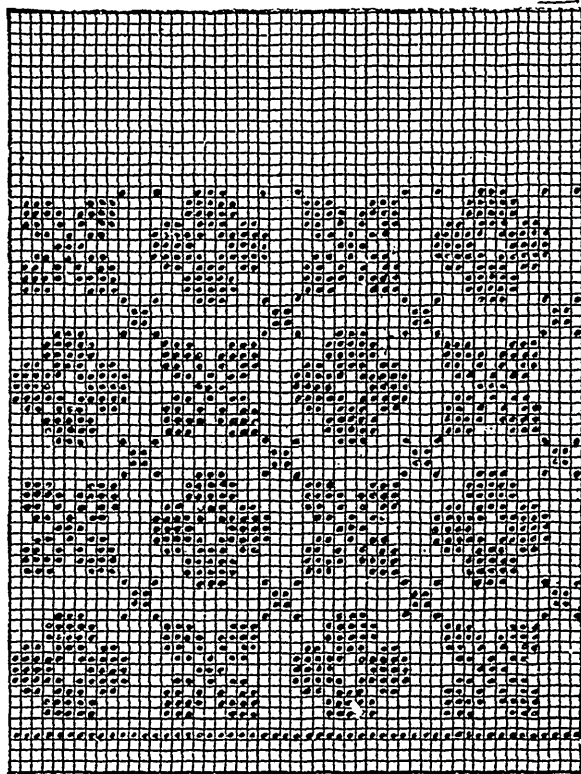


FIG. 123. DETAIL OF PATTERN, PURSE No. 16.

Work 1 single crochet into every stitch; follow the pattern again and work the same four figures once, which will be the proper depth for flap. The silk must be cut at the end of each row in order to have the beads worked from the wrong side, which is the case with all bead work of this character. Care must be taken in cutting the silk and renewing at the other end that no stitches are lost, that the regularity of the design may be preserved. If this method is too trouble-

purse is desired, after which two rounds are worked in single crochet without beads. On completion of this part of purse the work is continued as follows, in rows:

Work in same direction as preceding row, as if for another round; 1 double crochet in the first and every alternate stitch, doing one chain between each double crochet, until exactly one half the number of stitches in whole round has been worked, and in the last stitch of this same half make 1 double crochet and turn, making a chain of one before going back over the row just worked, to make the flap.

*B. & A. SILK IN HOLDERS—NEAT, COMPACT, CONVENIENT.*