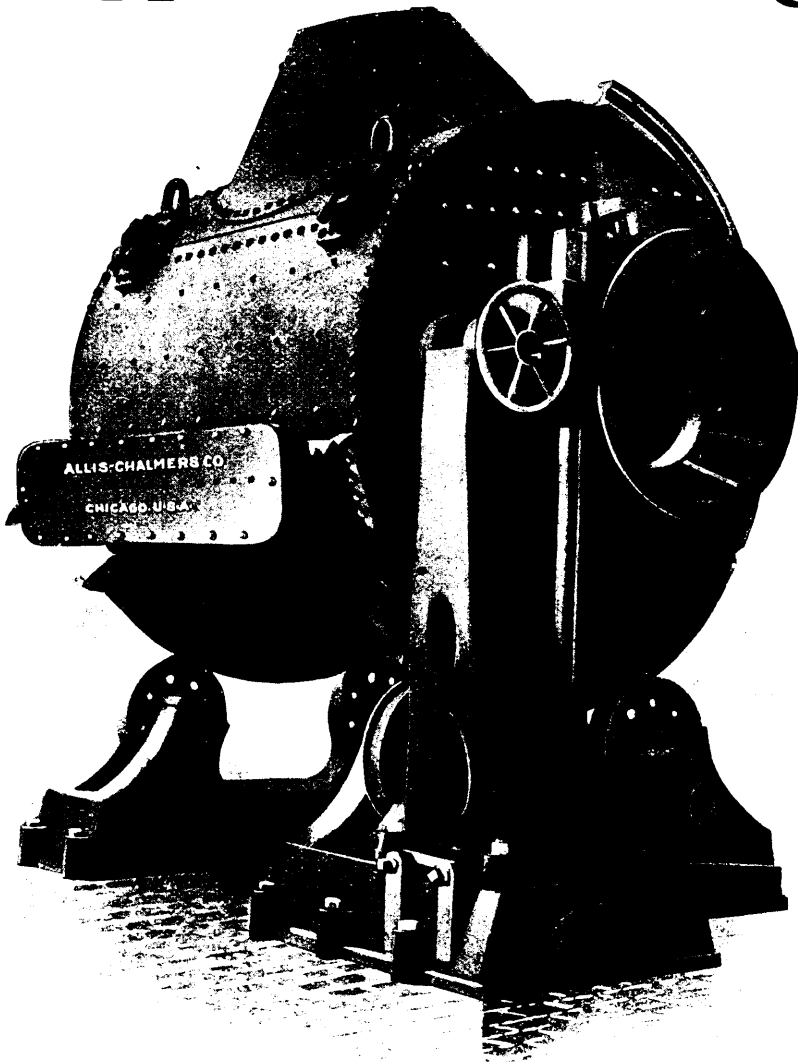


ALLIS-CHALMERS CO.

SUCCESSOR TO
 THE EDWARD P. ALLIS CO. FRASER & CHALMERS. GATES IRON WORKS. DICKSON MFG. CO.
 Milwaukee, Wis. Chicago, Ill. Chicago, Ill. Scranton, Pa.

BUILDERS OF

Copper Converting Machinery



We make a specialty of Copper Converting Machinery and are prepared to furnish:

Copper Converters

BISBEE TYPE
 PARROT TYPE
 STALMANN TYPE

Hydraulic Machinery

ACCUMULATOR SYSTEM
 PRESSURE TANK SYSTEM

Hydraulic Transfer Cars
 Hydraulic Mold Carriages
 Refining Machinery
 Blowing Engines
 Boiler Plants, Etc., Etc.

Some of our recent orders:

Calumet & Arizona Mining Co.
 Moctezuma Copper Co.
 Arizona Copper Co.
 Granby Consolidated Min. & Smelt. Co.
 Northwestern Smelting & Refining Co.
 Geo. Westinghouse Copperfield Mines
 Bingham Consolidated Min. & Smelt. Co.

The above illustration shows our Standard "Trough" or Bisbee Converter. The shell, heads and nose are made of heavy steel plate; the riding-ring of cast steel; the gear wheel is a full circle faced and bolted to a faced circular casting riveted to the head. The rack is hinged at the bottom and held in place by a cam. The wind-box is furnished with Dyblie valves.

BRANCH OFFICES:

NEW YORK, Broad Exchange Bldg.
 PITTSBURGH, 1212 Frick Bldg.
 MINNEAPOLIS, 116 Corn Exchange Bldg.
 DENVER, 1619 Tremont St.

GENERAL

CHICAGO,



OFFICE:

ILL., U.S.A.

HOME INSURANCE BUILDING.

BRANCH OFFICES:

SALT LAKE CITY, Dooly Block.
 SPOKANE, 512 First Ave.
 SAN FRANCISCO, 623 Hayward Bldg.
 LONDON, ENG., 160 Dashwood House