

Choice GROCERIES

which are most essential in making
The Festive Season Enjoyable.

XMAS Stockings and Bon Bons.

Plum Pudding—Tins

Mince Meat—Glass.
Bacon in Glass.
Lazenby's Pickles.
Mango Chutney.
Black Leister Mushrooms.
Boned Chicken.
Chicken a La King.
Campbell's Soups.
Asparagus.
Almond Paste.
Beef Suet.
Baker's Chocolate.
Shredded Coconut.
Essence Coffee.
Dromedary Dates.

DRINKS.

No Script required for this lot.
SCHWEPPEES
Lemonade, Ginger Ale,
Ginger Beer.
NON-ALCOHOLIC WINES
Marsh's Port Wine.
Grape Juice.
Apple Cider.
Rose's Lime Juice.
Assorted Syrups.

CHOCOLATES.

A choice assortment in
Fancy Boxes in Neilson's
and Moir's which are sure
to please.

CHEESE.

McLaren's, Canadian,
Parmesan.

EGG YOKE.

1 lb. equal in quantity to 4
doz. eggs, \$1.20 lb.

FRUITS—Tins.

Peaches—Sliced & Whole.
Cherries—Black & White.
Egg Plums, Pears,
Sliced Apricots.

FRESH FRUITS.

Grapes—Malaga and Em-
peror.
Pears, Tangerines,
Cal. Oranges.
Florida Oranges.
Table Apples.
Grape Fruit.
Cal. Lemons.
Bananas.

NUTS.

Wal. Brazil, Filbert.
Salted Jordan Almonds.
Shelled Walnuts.
Shelled Val. Almonds.

CIGARS.

We have a limited supply
in Cabinet Boxes suit-
able for presents; also a
full line in ordinary boxes.

CIGARETTES.

Craven Mixture.
State Express (de luxe).
Three Castles in 50's & 10.
Capstan in 50's and 10.
Gems, 50's.

BOWRING BROTHERS, Ltd.,

332 GROCERY, St. John's. 332.
m.w.t.f

QUALITY and BEAUTY

is our aim in selecting goods. This year we have
a very high standard of both.

See Our Window.

We feel sure you will find something there to suit the
most fastidious taste.

R. H. TRAPNELL, Ltd.

ST. JOHN'S.

dec13,eod

Your Account Books for 1919.

Our stock is now complete with every de-
scription, size and style.

LEDGERS, JOURNALS, CASH BOOKS,
DAY BOOKS, COLUMN BOOKS,
BALANCE BOOKS.

LETTER, MINUTE, BILL, TIME and
PRICE BOOKS.

Because of economic conditions our stocks
are limited. We advise an early selection to
avoid disappointment.

DICKS & CO., Limited.

BOOKSELLERS and STATIONERS.

WE HAVE IN STOCK

For Immediate Delivery:

**VICTORY FLOUR
CORN FLOUR
ROLLED OATS
Beans, Extra Quality
RICE
COTTON WASTE
Columbia Batteries**

"Palmer" Marine Engines.

FRANKLIN'S AGENCIES, LTD.

199 Water Street.

dec6,f,s,t

WHOLESALE ONLY

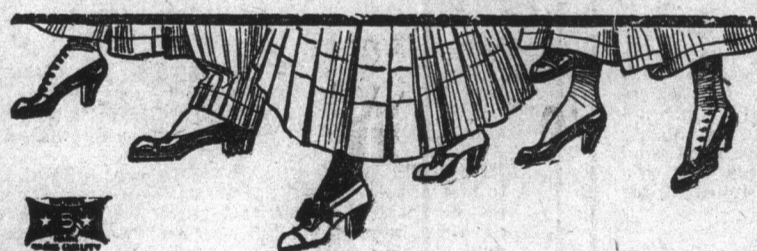
PORK

In Store:

**HAM BUTT,
MESS,
BELLY PORK.**

**HARVEY
& Co., Ltd.**

LOWEST PRICES



Xmas At The Home of Good Shoes.



Ladies! We have just received a line of HIGH CUT BOOTS
in Dark Tan Mahogany Calf, 8 1/2 and 10 inches high; military
heel. This makes an ideal Skating Boot.

We are now showing new styles in GENTLEMEN'S DARK
TAN CALF BOOTS at \$7.00, \$8.00, \$9.00, \$10.00, \$11.00, \$12.00,
\$14.00 and \$15.00.

F. Smallwood,

THE HOME OF GOOD SHOES.

dec24,tf

Reid-Newfoundland Co

FREIGHT NOTICE!

S. S. SAGONA will leave Dry Dock Wharf 10 a.m. Saturday,
December 28th, for ports as already advertised, and Moreton's
Harbor, Pilley's Island, Little Bay Islands, Springdale.

Freight for this steamer for Twillingate, Tilt Cove, Moreton's
Harbor, Pilley's Island, Little Bay Islands and Springdale (only)
will be received at the Freight Shed to-day (Friday) from 9 a.m.
till 1 p.m.

TRINITY BAY STEAMSHIP SERVICE.

Freight for S. S. PETREL, Trinity Bay ports of call, will
be accepted at Freight Shed to-day (Friday) from 9 a.m. till
3 p.m.

PLACENTIA BAY STEAMSHIP SERVICE.

Next acceptance will be for Merrasheen route (Bay Run)
and will be advertised later.

SOUTH COAST STEAMSHIP SERVICE.

Next acceptance will be advertised later.

NOTRE DAME-BONAVISTA BAY STEAMSHIP SERVICE.

Freight for S. S. CLYDE for ports of call on above route
via Port Union (except Botwood and Kite Cove) will be accepted
at the Freight Shed Saturday, 28th inst., from 9 a.m. till such
time as cargo received.

REID-NEWFOUNDLAND Company

J. J. ST. JOHN.

All Ready for You,
Mr. Man!

3000 brls. FLOUR—
Best brands; some
white while it lasts.
210 brls. HAM BUTT
PORK at \$44.00 brl.
185 brls. BEST BONE-
LESS BEEF — Very
tender.
65 brls. SPARE RIBS.
130 puncheons and brls.
Very Best MOLASS-
ES — Grocery and
Fancy.
500 bags PURE WHITE
CORN MEAL, Table.
350 bags YELLOW
FEED MEAL.
2000 bags CATTLE FEED
from \$4.50 bag.
95 Half Chests TEA—
Great value.
And a full line of GROCER-
IES at Bottom Prices.

J. J. ST. JOHN.

136 and 138 Duckworth St.

BRICK!

Now Landing,
100,000
RED BRICK.

H.J. Stabb & Co.

ST. JOHN'S.

Walter A. O'D. Kelly,

LICENSED AUCTIONEER and
COMMISSION AGENT.

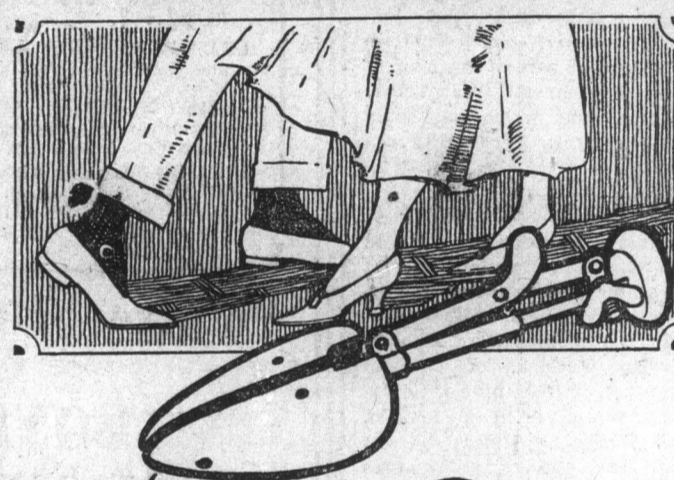
Sales of Household Furniture, Real
Estate and all classes of goods under-
taken. Personal attention, prompt re-
turns.

We have room at our Auction
Rooms to receive a limited quantity
of articles offered for sale. If you
have anything to sell consult us.

Consignments Solicited.

We also make a specialty of all
kinds of Building Materials. Office
and Store corner of Adelaide and
George Streets.
PHONE 479. P. O. BOX 572.
sep17,tu,h,s,tf

MINARD'S LINIMENT CURES DAND-
RUFF.



After the Dance



SELF-ADJUSTABLE

SHOE TREES

COMBINATION SHOE
TREE AND STRETCHER

Buy a pair to-morrow and see what a marked difference
they give the appearance of your shoes overnight.
At all leading Shoe and Department stores.

BOWRING BROTHERS, Ltd.

Hardware, Agents.

A Seasonable Showing of Ladies' Blouses.

IN SILKS,
CREPE DE CHINES,
And
GEORGETTE CREPES.

Newest designs just from New York, fancy
Beaded and Embroidered Fronts.

They make an ideal Christmas Present for
Mother or Sister.

Prices range from \$3.50 to \$12.50.

THE OUTLET SUPPLY HOUSE

192 Duckworth St., Opp. T. & M. Winter's.

TORONTO, Noon—Fair to-day. Partly
day—Strong winds and gales from
eastward with snow.

ROPER & THOMPSON—Bar, 29.4
Ther. 38.

Auction Sales

AUCTION SALE.

FREEHOLD PROPERTY

We are instructed to sell by
Public Auction.

On TUESDAY NEXT
the 31st day of December, inst.,
at 12 o'clock noon,
on the Premises,

That 2 1/2 Storey Detached
DWELLING HOUSE

No. 13 Bates' Street

(leading from Beck's Cove to The
Hill). The property has a frontage
of 24 feet 4 inches. This House will
make a good investment for rent,
having no ground rent to pay, and
the Municipal Taxes very small. For
further information made known by
application to

FRED. J. ROIL & CO.

dec27,31 Auctioneers

Winter Mails for the Labrador Coast, via

Mails for places along the
Labrador Coast will be despatched
from the Post Office at St. John's
on the 4th and 18th January,
1st and 15th February, and
the 1st, 15th and 29th March.
Letters from Newfoundland
should be posted in time to
reach Quebec before the above
mentioned dates.

J. ALEX. ROBINSON,
Postmaster General

dec28,jan2,10

The Ideal Christmas and New
Year Drink is

Essence of Ginger Wine.

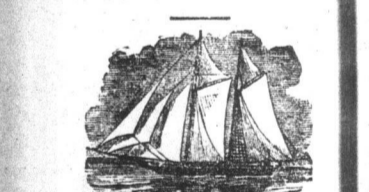
Our essence is made from the
purest ingredients and is strictly
non-alcoholic.

The contents of one two-
cent bottle makes three quarts
of delightful and refreshing Gin-
ger Wine. Take home a bottle.

PETER O'MARA

The Druggist,
46-48 WATER ST. WEST.

FOR SALE!



Several Schooners and
Fishing Boats ranging from
80 to 18 tons. Also a num-
ber of Codtraps.

WILLIAM ASHBOURN

dec14,s,t,h,tf Twillingate

Public Notice.

The public are reminded that
all Births which occur in the
City of St. John's must be re-
ported within TWO DAYS to
the Registrar General, 20
Duckworth Street. The penalty
for failing to report is FIVE
DOLLARS.

E. DOYLE,
dec21,31,s Registrar General

Salada Tea AND HOW TO BREW IT.

1. Let the water be fresh from
the tap.
2. Let water boil for two min-
utes.
3. Scald out teapot and while it
is warm put in one teaspoon-
ful of Salada for every three
cups of tea required.
4. Pour the freshly boiled water
on the leaves and let it re-
main not less than five min-
utes more than seven minutes,
then serve.

Baird & Co.

DISTRIBUTORS.