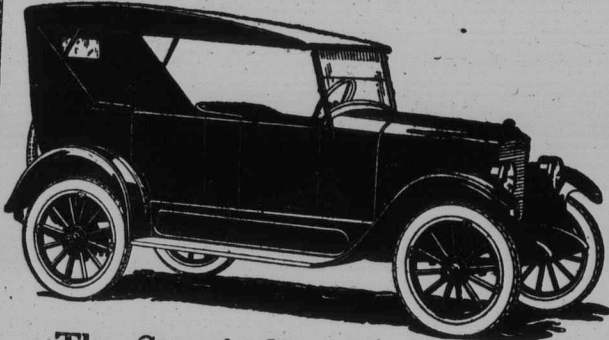


The New STAR



The Star is Standard in design, presents an appearance you can be proud of, and has established a reputation for quality and service far beyond its modest price.

ASK FOR A DEMONSTRATION

L. PLETSCH & ON
Local Dealers

FOURTH of the series dealing with the establishment of the BANK OF MONTREAL at representative points in CANADA and elsewhere

IN TORONTO



A YEAR after being founded, the Bank of Montreal spread its Branches westward, in July of 1818 establishing Agencies at Kingston and York.

York, which afterwards became the city of Toronto, had then just had its first stage-coach communication established with Kingston and Montreal. It was merely a settlement in a clearing amid unbroken forests from which the Indians came to trade with farmers and other members of the little community. Today Toronto ranks among the largest cities on the continent.

Of the Bank's 567 Branches, 26 are in Toronto and 207 in the Province of Ontario, including Toronto.

BANK OF MONTREAL

Established over 100 years

Total Assets in excess of \$650,000,000

LAKELET

The sink hole here is a dangerous looking piece of road. We measured the water the other day at the deepest point and it was one foot and four inches. The road has been closed to traffic, fences built at each end, the regular notices up and two lanterns burning each night. That, of course, exonerates the county in case of accidents. However, our mail man, and those from here, who have to get to Clifford are taking chances, let down the bars, go through and put them up again. With horses that are used to it, there is no immediate danger, for so long as the driver keeps right on the middle of the road, the bottom is comparatively firm, though indented as it is, but with a strange horse that might scare and swerve to the right or left, the results might be disastrous. This road has been a menace the past years. There is a man at Goderich we call the county engineer—one of those high colored fellows—whose duty it is to look after this road, but the people in this community know how much he has accomplished. Last week Geo. Hubbard, a steady-revee, and E. Noy, read Liss, asked Peter Bickert what he would take to allow traffic through his farm for a couple of months. He asked \$25 per month, a reasonable figure, but the engineer said "No, let them go round 'Isn't that galling." Harold Gook has bought the house on the R. Chaffle farm, and is moving it across the road to his own property, where he will use it for a garage.

We see the cars are already being pulled into Mr. Huth's shop for repairs. People will talk about hard times and scarcity of money, but there is always a dollar left to tune up the car. Yet it is the unanimous verdict of the people that cars have done more to put the country into its present financial low ebb, than any other one thing.

Sangster Bros. of the 17th have some fat cattle that weigh over 1500 lbs. They have 19 head in all. They should and no doubt will get the higher price. James Sangster is admitted to be the best cattle feeder in this part of the township.

Jim is not roaming round the country when the cattle should be fed. Andrew Allen is making preparations to have his barn renovated this summer. Paul Preiss will supervise the work and while Paul will not say much, he will do the work right.

CLIFFORD

Howard Klemmer, a public school student staying with his grandfather Mr. Gottlieb Klemmer, got hit on the head with a bat while playing ball at the tennis court on Tuesday. The wound required the services of a doctor.

News about the condition of Mr. John H. Taylor, who is at the Hospital in Guelph, is not very encouraging. A minor operation was performed last Saturday. Another major operation may be necessary some time this week.

Invoices have been received for the wire and other material necessary for the installation of the Hydro-Electric Power in Clifford. We understand the poles from here to Hamilton are about all erected, and that wiring will commence at once. The connection may be on before some have their places wired. So far few of the business places are wired as yet.

Mr. Ed. Welton has sold out his blacksmith business to Mr. McGilvray of Dobbington, who is now in possession. He is reputed to be a good mechanic. Mr. Welton was well liked. A quiet, inoffensive citizen, who attended strictly to his business, and used everybody right. He will go to his home at Dashwood for a time before he relocates.

CLOTHING AND CASH TAKEN BY BURGLARS IN WINGHAM

Wingham, April 11—Some time during last night thieves broke into the general store of J. A. Mills and stole a quantity of goods, principally men's suits, and about \$660 in cash. Entrance was gained through a cellar window. The work was evidently done by amateurs, but whether local men are suspected the police refuse to state.

BRUCE COUNTY HOG GRADING

Are You Getting the Premium?

Hog grading is a policy which has been in operation nearly three years. The merits and the economic necessities of the present grading regulations have in that time been widely discussed, and strongly advocated by those alive to our present hog marketing situation. By a few others, from honest motives and otherwise, they have been strongly condemned. "Why to all this trouble and expense?" they ask. "Isn't the old method of buying on the flat basis the easiest and quite good enough? So why change?"

But the wide awake farmer and shipper must realize that "easy methods" do not always suffice, and that they are not going to win for us a profitable export outlet for our large annual surplus of hogs. Hog grading is essential for quality production; and the grading popularity of sale by farmers on a graded basis in the country is conclusive proof that in actual trading practice the policy is sound.

Then too, if our hogs are of reasonably good quality sell on grade means a better price and more dollars for the consumer. From the following grading figures for the period from October 15th, 1923, to March 31st, 1924, we see that our hogs generally are grading well. They are of a quality which makes their sale on a graded basis both desirable and profitable.

Station	No. Hogs	Select	Thick	Heavy	Shop	Light
Bruce County	3532	308	502	5.0	6.2	4.0
Walkerton	1533	400	500	5.0	6.2	4.0
Pinkerton	1001	400	400	8.0	6.0	4.0
Elmwood	3253	370	460	5.0	6.2	4.0
Ridley	3303	360	460	5.0	6.2	4.0
Park Head	4465	340	500	5.0	8.0	6.0
Paisley	1073	330	540	6.0	3.0	4.0
Elmwood	3253	330	530	6.0	3.0	4.0
Kilmearne	3066	320	530	6.0	3.0	4.0
Howarth	963	320	510	4.0	6.0	2.0
Port Elgin	2794	310	520	5.0	6.0	4.0
Elmwood	3253	310	520	5.0	6.0	4.0
Measuray	1625	300	490	6.0	7.0	8.0
Elmwood	2840	290	430	7.0	11.0	3.00
Elmwood	966	260	510	5.0	9.0	6.0
Thorn	3848	260	500	4.0	10.0	6.0