

## ST. LUKE'S HOSPITAL, CHICAGO, ILL.

Training School  
For Nurses.

This School offers to young women of superior education and refinement a complete and comprehensive course in nursing.

For information address,  
**DIRECTRESS** of the  
Training School,  
St. Luke's Hospital, Chicago, Ill.

## DUNHAM LADIES' COLLEGE, DUNHAM, - QUE.

Montreal Diocesan Church School for Girls.  
For Calendar, apply to the Lady Principal.

## Edgehill, Church School for Girls WINDSOR, NOVA SCOTIA

INCORPORATED 1891.  
The Bishop of Nova Scotia, Chairman Board of Trustees. The Bishop of Fredericton, member of Board of Trustees, ex-officio.

Lady Principal, Miss Gena Smith, (late Lady Principal of King's Hall, Compton, P. Q.), formerly Headmistress of St. Stephen's High School, Windsor, England, assisted by Eleven Resident Experienced Governesses from England, (five of whom are specialists in the Music and Art Departments). House-keeper, Matron and Nurse.

Extensive buildings, with capacity for 100 Residents; Heated by Hot Water, Lighted by Electricity. Grounds covering eight acres, with Lawns for Tennis, Croquet, Basket Ball, Hockey, &c. School Dairy and Laundry.

Preparation for the Universities.  
For Calendar apply to **DR. HIND.**

HIGHER EDUCATION FOR GIRLS

## The Bishop Strachan School Fortieth Year.

PRESIDENT the Lord Bishop of Toronto.  
Wykeham Hall, College Street, Toronto.  
Full Matriculation course also  
Elementary work.

For Calendar apply to  
**MISS ACRES, Lady Principal.**

## Ridley College, St. Catharines, Ont.

Residential School for Boys.  
Lower school for boys under fourteen; completely separate and limited in number.  
Upper school prepares boys for the universities, professions and for business. Most careful oversight. Health conditions unequalled.

**REV. J. O. MILLER, M.A., D.C.L.,**  
Principal.

Church & Memorial  
Windows  
STAINED GLASS  
DESIGNS  
ESTIMATES  
SUBMITTED  
LUXFER PRISM  
100 King St. W. Toronto

MEMORIALS  
AND  
DOMESTIC  
GLASS  
DOMINION STAINED GLASS  
CO. LTD.  
54 Richmond St. E. Toronto

STAINED GLASS  
MEMORIAL  
WINDOWS  
BRASSES AND  
DECORATIONS  
CASTLE & SON,  
2446 St. Catherine  
Street, - Montreal.

## Glen Mawr

651 SPADINA AVENUE, TORONTO

A Residential and Day School  
for Girls

Thorough in all its departments. Gives careful individual attention, and good physical, mental, and moral training.

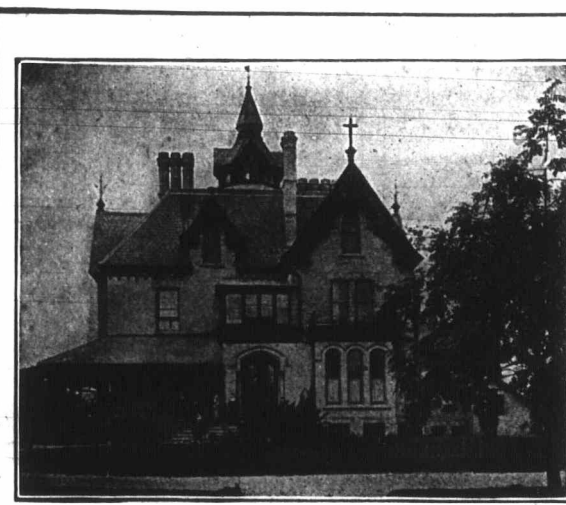
Offers great advantages in Music, Art, and Languages, Native French and German teachers.

Large staff of experienced residential and visiting Professors and Teachers.

Pupils are prepared for the Universities, and for the Music and Singing Examinations of Toronto University, the Toronto Conservatory of Music, and the Toronto College of Music.

For Prospectus and full information apply to  
**MISS VEALS, Lady Principal.**

When Writing to  
Advertisers Please  
Mention The Can-  
adian Churchman.



## Bishop Bethune College, OSHAWA, Ontario

Visitor, the Lord Bishop  
of Toronto.

Preparation for the  
University.  
Young Children also  
Received.

For terms and particulars  
apply to the **SISTER IN  
CHARGE**, or to

**The Sisters of St. John  
the Divine**  
Major St., Toronto

## HAVERGAL LADIES' COLLEGE

TORONTO

UPPER AND LOWER SCHOOLS GIRLS PREPARED  
FOR MATRICULATION

Havergal Diploma and Arts Course.

Gymnasium—Two resident gymnastic specialists from the Boston Normal School.

Large Hockey Rink and Play-grounds.

Contracts have been awarded for the erection of a new Junior School, with swimming bath, domestic science school, kindergarten departments, and all the latest appliances and equipments. To be opened September, 1906.

Twenty-seven resident staff.

For information apply to

**MISS KNOX, Principal.**

## WESTBOURNE School for Girls

340 Bloor Street W., - TORONTO, Can.

Re-opens September 11th, 1905.

A Residential and Day School, well appointed, well managed and convenient. Specialists in each department. Affiliated with the Toronto Conservatory of Music. Dr. Edward Fisher, Musical Director; F. McGillivray Knowles, R.C.A., Art Director. For announcement and information, address the principals

**MISS M. CURELLE, B.A.**  
**MISS F. E. DALLAS, Mus. Bach.**



CHURCH BRASS WORK of every description,  
made to order on shortest notice. Designs furnished  
and satisfaction guaranteed.

**KEITH & FITZSIMONS, LIMITED**  
111 King Street West, Toronto.

## Schools of The Sisters of The Church

106 Beverley Street, Toronto, Ont.,  
and 330 Kent Street, Ottawa, Ont.

BOARDING AND DAY SCHOOLS FOR GIRLS

Visitor: The Lord Bishop of Toronto.

TERMS MODERATE. VACANCIES FOR BOARDERS.

School re-opens Tuesday, April 24th, 1906.

ADDRESS—Sister in Charge.

## ST. ALBAN'S CATHEDRAL SCHOOL Howland Avenue, Toronto.

Boys Prepared for Honor Matriculation.

Reopens for BOARDERS and DAY Boys,  
**January 11th.** For Prospectus  
Apply, **M. E. MATTHEWS, Principal.**

## CHURCH DAY SCHOOL

Major Street, Toronto

**SISTERS S. JOHN THE DIVINE**

KINDERGARTEN and

LEMMENTARY DEPARTMENT

## JONES AND WILLIS

Church Furniture Manufacturers  
Metal, Wood, Stone  
and Textile Fabrics.  
STAINED GLASS ARTISTS.

48 Great Russell Street, LONDON, ENG.  
Opposite British Museum.  
Also at Birmingham and Liverpool.



## ST. AGNES' SCHOOL. A Church School for Girls.

ELMPOOL, BELLEVILLE, ONTARIO.

Patron—The Lord Bishop of Ontario.

Thorough Courses in English, Languages,  
Music, Art and Physical Culture.

Conservatory of Music Examinations held  
at the School.

Pupils taken from the Kindergarten to Pre-  
paration for the Universities.

The success of the School has justified a  
large addition to the building, containing six  
Class Rooms, Piano Rooms, Gymnasium,  
Swimming Bath and Sleeping Apartments.

The building is heated by steam and lighted  
by gas and electricity.

The grounds extend over five acres.

For Prospectus and further information  
apply to

**MISS F. E. CARROLL,**  
Lady Principal.

## Trinity College School PORT HOPE, Ont.

Next Term begins  
**April 23rd.**

For Calendar and all particulars apply to  
**Rev. OSWALD RIGBY, M.A., LL.D., Headmaster**

## Memorial Windows Our Specialty.

The N. T. LYON GLASS CO., LTD.,  
141-3 CHURCH ST., - TORONTO.

Harrington's  
Tubular  
CHIME BELLS  
Lighter in Weight,  
Sweeter in Tone,  
Cheaper in Price  
than the ordinary  
bell.  
Coventry, England  
Castle & Son  
Agents  
2446 St. Catherine  
Street  
Montreal

EAGLE and RAIL LECTERNS,  
Altar Rails, Crosses, Vases, Desks, etc., Candle-  
sticks, Vesper Lights, Memorial Brasses, Chan-  
deliers, and Gas Fixtures, Communion Services,  
made or refinished. Electrical Contractors.

**CHADWICK BROS.**

Show Room, 193 East King St., Hamilton.  
Factory, Oak Ave., near Barton St.  
Send for Catalogue

Church  
Brass Work  
MEMORIAL  
BRASSES  
RAILS, LECTERS  
**PRITCHARD ANDREWS**  
CO. OF OTTAWA, LIMITED  
133 Sparks St. OTTAWA.

# Car

Vol. 32.

## THE PERFECT



**BERKINSHAW**  
348 Yonge Street  
Samples and self-meas

WANTED—The Church a  
out an incumb  
a stipend of \$900.00 per an  
Rector. The congregation  
gistic man, and the Wardens  
Davies will be pleased to h  
would like to come to the W  
erty is well located and the o  
man to build up a large an  
tion are excellent.

CLERICAL REGIST  
EXCHANGE.—THE JC  
Co., 136  
Clergymen and Orga  
Appointments in the States  
writing to the Company.

Friends of a rector seek  
Able and eloquent preacher  
organizer; varied experie  
salary secondary considerati  
State full particulars. Chur  
man, Toronto.

WANTED—Assistant fo  
London, Ont  
love for the work. Unive  
\$1300. Apply to Rev. Can

HOSPITAL OF  
NEWAF  
School fo  
A three years Graded C  
the SISTERS OF ST. M  
vacancies for educated w  
23 and 35, for the class fo  
For Circulars and Infor  
Miss AUGUSTA H. E

THOUSAN  
SUMMER  
It is situated on a very  
the most beautiful p  
River. Conditions of  
spot for a boy to open  
obligatory. For furth  
REV. AU  
132 Wes

THE GENERA  
SEMINARY,  
The next Acad  
Wednesday,  
Special Students  
Course for Gradus  
Seminaries. — The  
sion and other pa  
The Very Rev. W.

Men and boys want  
bricklaying. Univer  
COYNE BROS., Trac  
St. Louis.

## St. Aug

Regl  
\$1.50 per C  
containing \$4.50 per  
here. Direct import  
Telephone Main

**J. C. MOOR, 4**

In answering  
is desirable  
The Canadi