

WHAT THE "IDEAL" FACE DOWN MACHINE WILL DO



There is absolutely no limit to the artistic possibilities of the Ideal Concrete Block Machine. Of the almost endless forms and designs of blocks that a single machine can produce, samples of a few are shown in cut. The "Ideal" is the only FACE DOWN Concrete Block Machine in the world with practically unlimited adaptability as to size, (within capacity) shape, and design of block.

In addition to the only perfect Concrete Block Machine we have the most complete line of cement machinery in the world, Brick Machines, Mixers, Sill and Lintel Machines, Column, Spindle, Ball and other Ornamental Molds. More than 3,000

IDEAL Face Down Interchangeable Concrete Machines

are in profitable operation in the United States alone, and we have recently closed the largest single contract for block machines in the history of the cement industry. Within a period of 30 days we have made heavy shipments to Calcutta, Shanghai, Sydney, Khartoum, Valparaiso, Mexico, Glasgow, Budapest, Bucharest, and Panama. Six carloads went to a single foreign country.

Our catalogue, magnificently illustrated, contains information of vital importance to Architects—Contractors—Builders and those who manufacture Concrete Stone. Sent FREE on application.

IDEAL CONCRETE MACHINERY CO., 211 KING ST., LONDON
Ontario, Canada

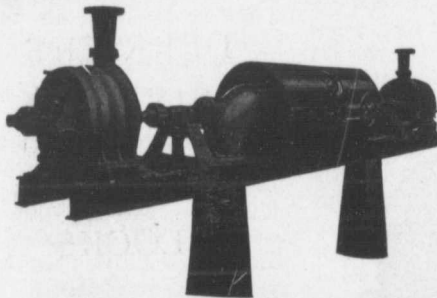
Canadian Sales Agents: **MUSSENS, LIMITED, Montreal, Quebec, Toronto, Winnipeg, Vancouver**



TWO SIZES:
MODEL "A"
16 in. LENGTH, MODEL "B"
24 in. LENGTH

PUMPS FOR WATER WORKS

WATER WORKS SYSTEMS INSTALLED



**Boilers, (Return Tube and Water
Tube,) Tanks, Penstocks,
Mill Machinery.**

Builders in Canada of

"WORTHINGTON" TURBINE PUMPS

The John McDougal Caledonian Iron Works Co.,

Estimates Cheerfully Furnished

HEAD OFFICE AND WORKS: **Montreal.**

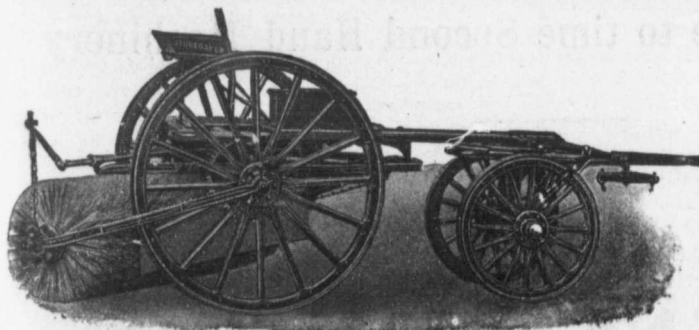
Limited.

DISTRICT OFFICES:

MONTREAL, 82 Sovereign Bank Building.
VANCOUVER 416 Seymour Street.

TORONTO, 810 Traders Bank Building.
NELSON, Josephine Street.

WINNIPEG, 251 Notre Dame Avenue
NEW GLASGOW, N.S., Telephone Building.



Stackpole
Patent improved

Street Sweeping Machine

Is the Standard
of Perfection

BECAUSE no sweeper so effectually does the work for which it is designed as "The Studebaker." It sweeps clean. No sweeper is constructed with the same degree of care and mechanical precision. It wears well. "The Studebaker" has the smallest number of working parts, and has less gearing than any other sweeper made. It is free from all unnecessary complications. With reasonable care it does not get out of order. Send for complete descriptive catalogue.



Studebaker Sprinkler (PATENT IMPROVED.)

Does not clog or get out of order. Greatest width of spray
Can be graded from driver's seat to any volume,
We also make an . . .

IMPROVED VERTICAL SPRAY

for Pavements

Geo. Heaman, Mfr., London, Ont.