

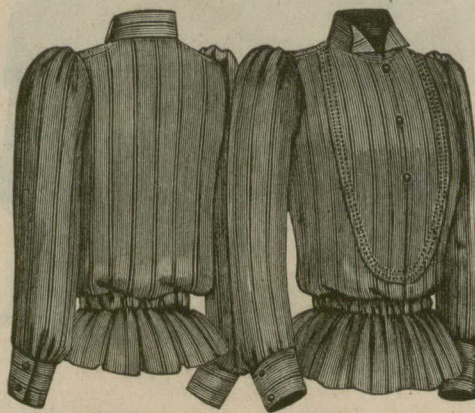
bust measure, and for the medium size two and three-quarter yards of material fifty-four inches wide, or five and one-fourth yards twenty-seven inches wide will be required. Price of pattern 25 cents any size.

No. 3154—Lady's House Dress, page 8. This charming home toilette may be seen on page 4, in Figure 3, as composed of Henrietta cloth and fancy plaid, but it is here depicted as constructed of old rose merino and figured delaine. The quaint style is in the early English mode so fashionable this season, and on a slim, girlish figure the effect is particularly pleasing. India or Chinese silks, Tamise, or many varieties of woolen goods, would also make up prettily after this fashion. The pattern is cut in five sizes, thirty-two to forty inches bust measure, and for a medium sized garment five and one-half yards of material forty-four inches wide, or nine and one-half yards twenty-seven inches wide will be required. Price of pattern 35 cents any size.

No. 3151—Lady's Cape, page 9. For spring wear, when the regulation jacket is found oppressively warm, nothing will be found as stylish or as comfortable as a shoulder cape. The novel model here shown was made of light-weight grey suiting to match a costume, each slashed section being ornamented by a simple but effective pattern in black braid. Many other combinations will suggest themselves, but if the cape is intended for general wear, a tan-colored cloth with black braiding or an army blue with black embroidery would be very stylish. We have this pattern cut in five sizes, thirty-two to forty inches bust measure, and for the medium size one and one-quarter yards of material fifty-four inches wide, or two and one-half yards twenty-seven inches wide, with one fancy clasp, will be required. Price 25 cents any size.

No. 3149—Lady's Costume, page 9. On page 5, Figure 4, a large illustration of this stylish indoor costume may be seen, and the full detailed description will be found on page 8. It is here shown as made of fine polka-dot challis, with peasant belt and collar

of velvet. It will be found an admirable mode after which to make up delaines, India robings, Paisley patterned flannels, and also washing fabrics. We have this pattern cut in five sizes, thirty-two to forty inches bust measure, and for a medium sized garment five and one-quarter yards of material forty-four inches wide, or eight and one-quarter yards twenty-seven inches wide, with three-quarters of a yard of velvet will be required. Price of pattern 35 cents any size.

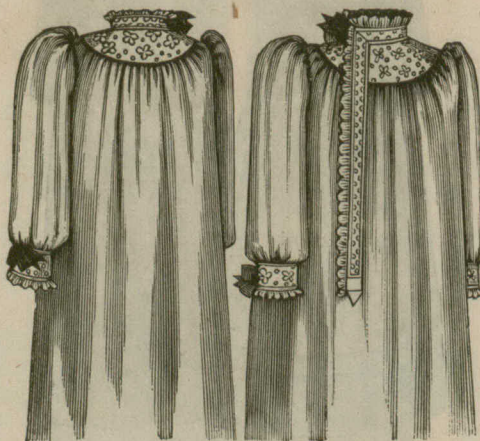


3146

Back and Front View.

Lady's Shirt. Cut in five sizes, 32 to 40 inches bust measure. Price 25 cents any size.

For full description see this page.



3148

Back and Front View

Lady's Nightdress. Cut in five sizes, 32 to 40 inches bust measure. Price 25 cents any size.

For full description see this page.

be suitable. We have the pattern cut in five sizes, thirty-two to forty inches bust measure, and for the medium size six yards of material thirty-six inches wide, one-half a yard of all-over embroidery and two and three-quarter yards of ruffling will be required. Price of pattern 25 cents any size.

No. 3146—Lady's Shirt, page 10. We here present a very simple and charming model for a new and fashionable article of feminine attire. These shirts are constructed precisely on the same principle as those of a man and are going to supersede the blouses so much worn last year. Silk striped Ceylon was used in the fabrication of our model, the ground being cream and the stripes alternate pale blue and pink. Although no goods will be found quite as pretty as the Ceylon in making these shirts, cambrics, fine lawns and cricketing flannels will be much used and they will be worn with plain and white skirts for tennis, picnics, rowing, and any outdoor expeditions where picturesque semi-negligée is *en vogue*. We have the pattern cut in five sizes, thirty-two to forty inches bust measure, and for a medium sized garment three yards of material twenty-seven inches wide will be required. Price 25 cents any size.

No. 3148—Lady's Nightdress, page 10. This new design for a nightdress is composed of white linen lawn and all-over embroidery, but fine cotton, Lonsdale, cambric, etc., with Torchon, or other varieties of lace for trimming would

What friends thou hast and their affection tried  
Grapple them to thy soul with hooks of steel.