

DESCRIPTIVE CATALOGUE

—OF—

THE D. A. JONES CO.

BEETON, ONT. LIMITED

NOTICE.

We issue this condensed price list of our goods at this season, for two reasons:

(1) To replace our Catalogue of 1888-9 of which we have just mailed the last.

(2) To cover additions made since the last price list was issued.

Fuller information of any of the articles described may be had on application by letter.

THE D. A. JONES CO., LTD.

Beeton, June 15, 1889.

TERMS.

Our terms are *Cash with order*, unless we have some personal acquaintance with our customers, and in such cases we send goods *on order*, but *expect remittance on arrival of goods*. Where accounts are not settled we draw through our bank for the amount, adding collection charges, and we expect drafts to be honored on presentation.

All goods are securely packed, and are shipped at owner's risk of breakage.

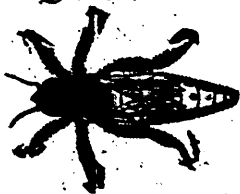
Perishable property, as bees, queens, will not be sent by express C.O.D., but cash must accompany order. *This is imperative.*

Remittances may be sent by Registered Letter, P.O. Order, Draft or Cheque, *payable here at par*. Personal cheques should be verified by the banks upon which they are drawn. American currency and stamps taken at par.

Write your office plainly, and *be particular to state Post Office, County or State, and Province*. Also *freight or express office*, and which way you want goods sent. State also *line of railway you are on*, and if distant from express office or station, how far.

BEE DEPARTMENT

QUEENS.



We endeavor to raise queens which will produce good honey gatherers irrespective of breed or race. We pay much attention to the class of drones with which our queens come in contact.

Queens cannot be shipped unless the weather is warm enough, except at risk of purchaser—otherwise safe delivery is guaranteed.

We replace all queens lost in transit, but not in introducing.

TABLE OF PRICES.

MONTH.	Untested	Tested	Selected	Virgin
May	1 50	2 50	3 00	
June	1 00	2 00	3 00	0 60
July	1 00	2 00	2 50	0 50
August	1 00	2 00	2 50	0 50
September	1 50	2 00	2 75	
October		2 50	3 00	

Three at one time, deduct 10 per cent.; six at one time deduct 20 per cent.

BEES.

Bees should always go by express, unless they are personally cared for *en route*.

We do not hold ourselves responsible for breakage or delay in transit of colonies of bees; they always leave our hands in good shape.

TABLE OF PRICES.

MONTH,	Italian	Italian Crosses	Carniolan Crosses
May	\$8 00	\$8 00	\$9 00
June	7 00	7 00	8 00
July	7 00	7 00	8 00
August	6 50	6 50	7 00
September	6 00	6 00	6 50
October	6 50	6 50	7 00

The above are for four colonies and under; 5 to 9 colonies, 3 per cent. discount; 10 to 24 colonies, 5 per cent.; 25 colonies and over, 10 per cent.—*always cash*. Unless otherwise ordered, all bees are shipped in Combination hives.

BEES BY THE POUND.

Just as soon as we can raise them in the spring, we will have for sale, bees by the pound at the following prices: Up to July 1st, \$1.25 per pound; after that date 90c per pound. Orders must be accompanied by the cash, and they will be entered and filled in rotation as received.

NUCLEI.

Two-frame nuclei—1 lb. Bees, two frames partly filled with brood and honey, and a good queen, \$4.00; two at one time, \$3.75 each, up to July 1.

After July 1, \$3 singly; two or more \$2.75.

Either Jones or Combination frames furnished. Please specify. If nucleus is wanted in hive, add price of latter as found in catalogue.