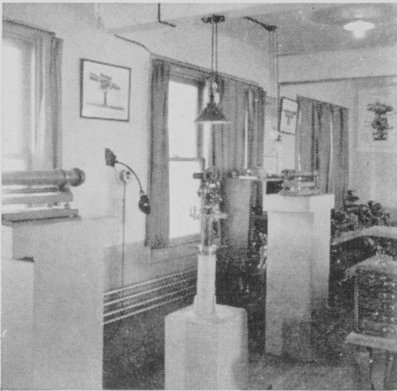


***A Modern Repair Shop
for all types of
Optical Instruments***



CAMERAS



MICROSCOPES



**SURVEYING
INSTRUMENTS**



**THE
ONTARIO HUGHES OWENS CO.
LIMITED**

527 SUSSEX STREET

OTTAWA, ONT.

HALIFAX ST. JOHN MONTREAL
PORT COLBORNE VANCOUVER

The Cover

RCMP Police Service Dogs are transported in the manner shown on this issue's cover. The cars—two-door sedans—have the rear seats removed and the dogs are screened off from the front by wire netting. The backs of the front seats form the doors to these kennels-on-wheels. The other two panels in the picture show three types of the German Shepherd breed presently in use by the RCMP.

In this Issue

The Boy Scout Movement is a fast-growing brotherhood with immense international possibilities to establish strong and everlasting feelings of good fellowship among nations. Because of the great interest in this Movement among members of the Force we are glad to present two articles on Scouting in this issue, one on page 243 by a member of "C" Division and the other on page 209 by Canada's Chief Scout Maj.-Gen. D. C. Spry, CBE, DSO. On page 236 a sea-going Mounted Policeman tells what it's like to be caught in a gale on a crippled ship; Corporal Cross a ballistics expert at the Regina Laboratory gives us a lecture on firearms identification on page 221, the 15-year history of the RCMP Dog Section is reviewed on page 191 and we would like to acknowledge with thanks the cartoon illustrating Corporal Hopkins' story about teeth on page 219. The artist—Warrant Officer Tracy of the RCAF magazine *Roundel*.

Contributions

This is as good a time as any to remind our readers that we are always glad to receive literary material. General interest articles, items for the Old-timers' Column, new happenings in the police profession and stories about unusual investigations are all needed by *The Quarterly*. All manuscripts will receive the consideration of our Editorial Committee and if for any reason are found unsuitable, they will be returned to the author.