

A Non-Fibrous
Anti-Friction
Box Metal
for
Machinery
Journal
Bearings.

SPOONER'S COPPERINE



The Most Durable Metal Known.

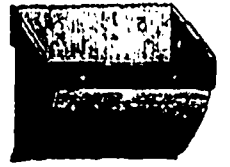
Prepared by
Messrs. F. G. Prior & Co., Victoria, B. C., J. H. Ashdown, Winnipeg, Man., Horace R. Ridout, 22 St. John St., Montreal, The
Chemical Warehouse, Quebec, Messrs. Robb & Son, Amherst, N. S.

Alonzo W. Spooner,
(Patent and Manufacturer)

PORT HOPE, ONT.

Hardware
Stores
all
Sell It.

FAVORITE Mill Buckets.



Manufacturer and Dealer,

JOHN RADIGAN,

19 and 21 Kelly St.,

HAMILTON, ONT.

SEND FOR PRICES.

Please mention the ELECTRICAL MECHANICAL AND MILLING NEWS when corresponding with advertisers.



MACHINE KNIVES

Of every description,
for
Planing,
Moulding,
Saw Cutting.

SEND FOR PRICE LIST.



Brough

& Caswell

14, 16, 18 BAY ST.

TORONTO

B. & C. MAKE A SPECIALTY
OF FINE CATALOGUE
PRINTING—

Printers

SEND FOR PRICES AND SAMPLES.

THE DODGE PATENT WOOD SEPARABLE OR SPLIT PULLEYS.

Best Belt Surface, Best Balanced, Strongest, Lightest and Most
Convenient Pulley in the World.

WITH OUR PATENT BUSHING SYSTEM

Every pulley will fit twenty two or more different sizes of shafting. Two hundred of our pulleys and an assortment of bushings represent as many as four thousand iron pulleys, a great advantage to dealers carrying stock.

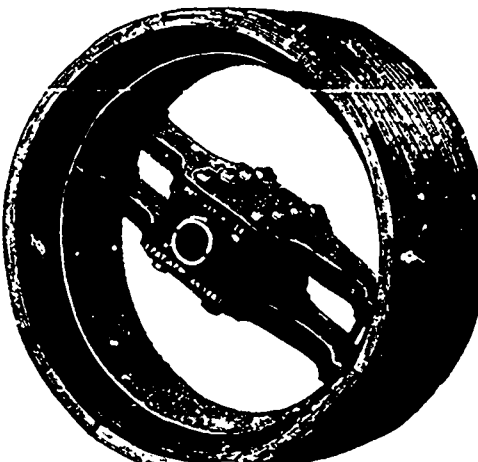
In comparing prices of pulleys, please note carefully the following:

Our list is lower than most others. Every pulley is a split pulley. Every pulley is guaranteed to transmit from twenty-five to sixty per cent. more power than any iron or steel pulley with same tension of belt. Our pulleys are seventy-five per cent. lighter than cast iron pulleys. The fastening does not mar the shaft. They are perfect in balance. They are the most thoroughly made wooden pulley in the world. And the handsomest pulley on the shaft. Every pulley as represented or no sale.

Order a sample pulley, after which you will have no other.

We make all sizes, from 9 inches to 16 feet diameter, and all strong enough for double belts.

We also manufacture **CROOVED HARD-WOOD PULLEYS** for the transmission of power by ropes—under the Dodge Patent System. Estimates furnished for main drives and transmissions of any required power on application.



BOX 335

Address:

THE DODGE WOOD SPLIT PULLEY CO.,

TORONTO.

TELEPHONE 2008

BAGS

For Flour, Oats, Bran, Feed, etc.

Every size and quality in stock.

The Largest and Best Equipped Bag Factory in Canada.

BAG PRINTING IN COLOURS A SPECIALTY.

Designs furnished free, and the best work guaranteed.

Printing capacity—15,000 bags daily.

HESSIANS OR BURLAPS

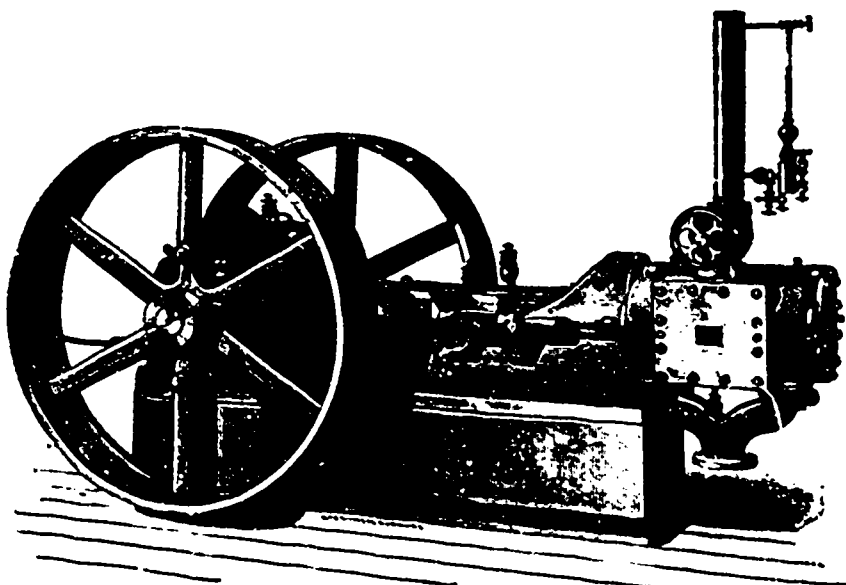
WE CARRY THE LARGEST AND BEST ASSORTED STOCK IN THE DOMINION.

THE CANADA JUTE COMPANY, Limited,

TORONTO AGENT: FRANK F. BARR,
45 Wellington St. East, TORONTO.

15, 17, 19 and 21 St. Martin St.

MONTREAL



ARMINGTON & SIMS HIGH SPEED ENGINE FOR ELECTRIC LIGHT PLANT, &c.

THE CANADIAN LOCOMOTIVE & ENGINE CO., (LIMITED)

KINGSTON,

ONTARIO

MANUFACTURERS OF

LOCOMOTIVE, MARINE

AND

STATIONARY ENGINES

Boilers of all Descriptions.

Sole Licensees and Manufacturers for Canada of

ARMINGTON & SIMS' HIGH SPEED ENGINES, THE "CYCLE" GAS ENGINE,
ATKINSON'S PATENT, THE "HAZLETON" BOILER.

Descriptive Catalogues of the above on application.

NOTICE.

The Canadian Locomotive & Engine Co., Limited, of Kingston, Ontario, have the exclusive license for building our Improved Patent High Speed Engine for the Dominion of Canada, and are furnished by us with drawings of our latest improvements.

(Signed)

ARMINGTON & SIMS

PROVIDENCE, R. I., Nov. 18th, 1889.