

## MUNICIPAL ENGINEERS, CONTRACTORS AND MATERIALS

**WILLIS CHIPMAN**

Hon. C. ad. McGill University.  
M. Can. Soc. C. E. M. Am. Soc. C. E.  
Mem. Am. W. V. Ass'n.

**WATERWORKS, SEWERAGE WORKS, GAS  
WORKS, ELECTRIC LIGHT AND  
POWER PLANTS**  
Reports, Surveys, Construction, Valuations  
**103 BAY STREET - TORONTO**

**R. E. SPEAKMAN, C.E.**

A. M. Inst. C. E., 1878.

**CONSULTING ENGINEER**

Waterworks, Sewerage and Sewage Disposal.  
Municipal Improvements.  
Granolithic Pavements.  
Electric Light Plants.  
Drainage and Irrigation of Land.  
Coal Handling Plant and Machinery.  
Plans, Specifications and Estimates.  
Construction and Valuations.

Canada Life Building - TORONTO

**Roderick J. Parke**

Am. Can. Soc. C. E., A. M. Amer. Inst. E. E.

**CONSULTING ENGINEER**

Hydraulic Power Development. Long Distance  
Power Transmission. Steam Plants, Electric  
Lighting and Power Systems. Tests  
Valuations. Reports.

49-410 Temple Building, TORONTO, CANADA

Telephones { Office—Long Distance Main 3047  
{ Residence—Long Distance North 2204  
Telegraphic address: "Rodparke."  
W. U. Code, Univ. Edition.

**Wm. Mahlon Davis**

Graduate R. M. College.  
M. Can. Soc. C. E. Ont. Land Surveyor.

**CONSULTING ENGINEER**

HERLIN, ONT.

Waterworks, Sewerage, Sewage Disposal,  
Drainage under The Municipal Act, Roadways.

**W. G. McNeill Thompson****CONSULTING ENGINEER**

M. Inst. C. E. M. Can. Soc. C. E.  
M. Am. Soc. C. E.

Examination of Works, Reports, Water Power  
Development, &c., &c.

ST. CATHARINES, ONTARIO

**ROSS & HOLGATE****Consulting and  
Supervising Engineers**

Waterworks, Electric Light and Power  
Plants, Structural Work, Reports,  
Estimates, Arbitrations.

ST. JOHN ST. - - MONTREAL  
KINNON BLDG. - - TORONTO

**Percival W. St. George**

Mem. Inst. C. E. London, England.  
Mem. Can. Soc. C. E.

**CONSULTING ENGINEER**

Railway, Sewerage, Water, Hydraulic,  
Expert and Arbitrations, &c.

411 TELEPHONE BLDG. MONTREAL  
Telephone, Main 4717.

**JAMES C. KENNEDY**

MEM. CAN. SOC. C. E.

Reports, Supervision, Con-  
struction, Dams, Water-  
Power Development, Water  
Works, Sewerage, Founda-  
tions, &c.

Box 710, OWEN SOUND, ONT.

Please mention THE CONTRACT RECORD  
when corresponding with advertisers.

**THE PHOENIX BRIDGE & IRON WORKS,  
— MONTREAL****GENERAL STEEL CONTRACTORS**

Large Stock I BEAMS, CHANNELS, ANGLES, TEES, ZEES and  
PLATES always on hand.

**Portland Cements...**

HIGH GRADE GERMAN BRANDS FOR GRANOLITHIC  
AND ARTIFICIAL STONE SIDEWALKS.

**Sewer Pipes,** Best English Cements. Best Belgian Cements  
**Culvert Pipes, &c.** **W. McNALLY & CO., Montreal**

**W. & F. P. CURRIE & CO.**

345 St. James St., Montreal

Importers of

**SEWER PIPES,  
CULVERT PIPES, ETC.**

**VENT LININGS,  
FLUE COVERS,**

**FIRE BRICKS,  
FIRE CLAY,  
WHITING.**



**PORTLAND CEMENTS,**

**HIGH GRADE ENGLISH**

" " GERMAN  
" " BELGIAN

**PLASTER OF PARIS**

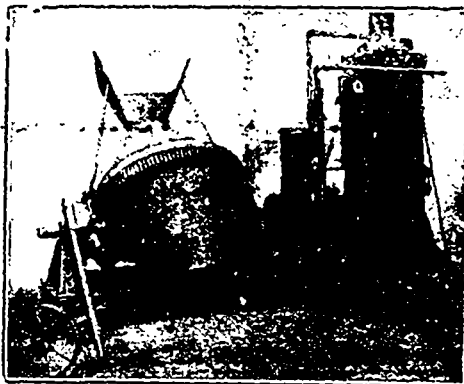
**BORAX,**

**CHINA CLAY.**

**SMITH  
CONICAL  
CONCRETE  
MIXER**

**18**

Different  
Sizes and  
Styles.



**Mixes in Batches. Discharges by Tilting while  
Running. Mounted on Skids or Trucks.**  
Catalogue on Application.

— SOLE CANADIAN AGENTS —

**W. H. C. Mussen & Co., 763 Craig St.,  
MONTREAL**

**CANADIAN  
CONTRACTOR'S  
HAND-BOOK**

and  
Estimator

Third Edition

Price \$1.50; to  
subscribers of  
the Canadian  
Architect and  
Builder, \$1.00.

SEND FOR A COPY

G. H. Mortimer  
Publishing Co.  
Toronto.

**The KERR ENGINE COMPANY, Limited**  
**PUMPING MACHINERY**

**HYDRANTS and VALVES**  
Are our Specialty

Don't fail to write us for Catalogue and prices.

WALKERVILLE, - ONTARIO

