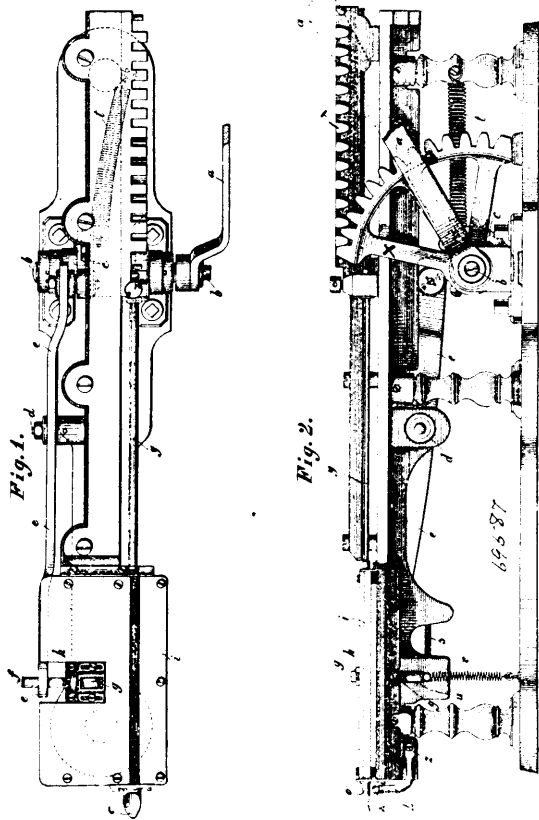


termination of the forward stroke of the plunger, as explained. 4th. The combination of the tube holding nose *a*, plunger *u*, lever *a*, rock

with a welt and an upper laid against the outer side of the covered abutment, and stitches engaging said welt and upper and also

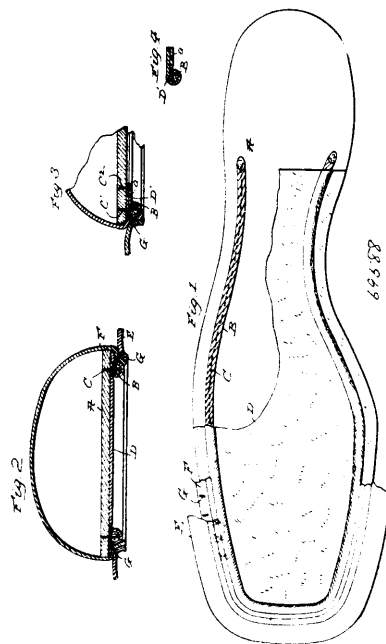


shaft *b*, segment gear *x*, and rack *x*, for operating said plunger, cam *c*, on the rock shaft *b*, lever *e*, actuated by said cam, arm *f*, on which the lever *e* acts, a clipping lever spring pressed pin *l* on lever *k*, projected in the path of the arm *f*, retracting spring *m*, and the slide bar *q*, carrying a tripping rod *s*, and moved by the plunger mechanism to press back the pin *l*, and release the clipping lever *k*, at the termination of the forward stroke of the plunger, as explained.

No. 69,588. Shoe. (*Chaussure*.)

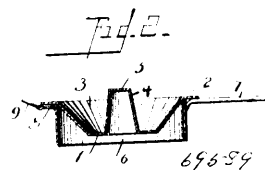
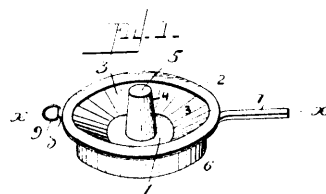
Albert Coney Rounds, and Udo Von Schauroth, both of Buffalo, New York, U.S.A., 4th December, 1900; 6 years. (Filed 9th November, 1900.)

Claim.—1st. As an improved article of manufacture, an insole having an abutment disposed below and connected to it at a suitable distance from its edge. 2nd. As an improved article of manufacture, an insole having an abutment of circular form in cross section disposed below and connected to it at a suitable distance from its edge. 3rd. As an improved article of manufacture, an insole having a covered abutment disposed below and connected to it at a suitable distance from its edge. 4th. As an improved article of manufacture, an insole having a hard, covered abutment disposed below and connected to it at a suitable distance from its edge. 5th. As an improved article of manufacture, an insole having a hard abutment disposed below and rigidly connected to it. 6th. As an improved article of manufacture, an insole having a hard abutment of circular form in cross section, and a cover therefor, said abutment and its cover being disposed below and connected to the insole. 7th. As an improved article of manufacture, an insole having a hard abutment, and a cover therefor, said abutment and its cover being disposed below and connected to the insole. 8th. An insole having an abutment disposed below and connected to it, in combination with a welt and an upper laid against the outer side of the abutment, and a connection between said welt and upper and the insole. 9th. An insole having a hard abutment of different material from the insole, disposed below and connected to it, in combination with a welt and an upper laid against the outer side of the abutment, and a connection between said welt and upper and the insole. 10th. An insole having a hard abutment, of circular form in cross section and of different material from the insole, disposed below and connected to it, in combination with a welt and an upper laid against the outer side of the abutment, and a connection between said welt and upper and the insole. 11th. An insole having a hard abutment, of different material from the insole, disposed below and connected to it, and also having a cover arranged over the abutment, in combination



engaging the portions of the cover at opposite sides of the abutment. 12th. An insole having a hard abutment, of circular form in cross section, disposed below and connected to it, and also having a cover arranged over the abutment, in combination with a welt and an upper laid against the outer side of the covered abutment, and stitches extending through said welt and upper and the portions of the cover at opposite sides of the abutment and the insole. 13th. As an improved article of manufacture, an insole having at its underside and abutment of circular form in cross section calculated to form a channel to receive the guide of a welt machine incident to the connection of a welt. 14th. As an improved article of manufacture, an insole having at its underside an abutment and a cover therefor, the said abutment being of circular form in cross section, and therefore calculated to form a channel to receive the guide of a welt machine incident to the connection of a welt.

No. 69,589. Cooking Pan. (*Casserole*.)



John W. Howle and Grant Green, assignee of Charles W. Garner, all of Searcy, Arkansas, U.S.A., 4th December, 1900; 6 years. (Filed 9th October, 1900.)

Claim.—1st. The cooking pan, consisting of a bottom 1, flange 2, cone-shaped wall 3, covered tube 4, vertical wall 6, larger and deeper than the pan, extending all the way around the cone-shaped wall, substantially as shown and set forth and for the purposes set forth. 2nd. The cooking pan, consisting of a bottom 1, flange 2,