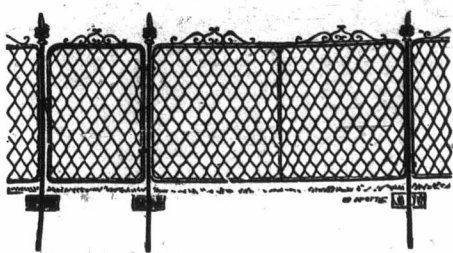


ST. CATHARINES Business College

is unsurpassed as a school of Business Training. Young men fitted to take and hold first-class positions as Book-keepers, Shorthand Writers and Telegraph Operators. Students of fair education and some experience preferred, but those who are younger and less experienced are also received, and are guaranteed advantages that are unexcelled in any other college.

CATALOGUES FREE.
W. H. ANGER, B. A.,
262-y PRINCIPAL.



WIRE FENCING OF ANY KIND.—Price from 50 cents per rod upward. Send to **E. C. JONES**, 47 King William street, Hamilton, Ont., for circular. 258-y

THE E. B. EDDY MANUFACTURING COMPANY (Limited)

Established A.D. 1854. Incorporated A.D. 1886.

HULL, P. Q.

MANUFACTURERS AND WHOLESALE DEALERS IN

**PAIS, TUBS, ZINC WASHBOARDS, BOX-SHOOKS,
TELEGRAPH, SAFETY and PARLOR MATCHES.**

Indurated FIBRE WARE

Light, Seamless, Tasteless, Impervious to Liquids, Indestructible. No Hoops. Will not Shrink or Swell. Cannot Leak, Water Soak or Rust. Being Seamless, Bottom cannot drop out. Proof against Hot and Cold Water, Kerosene, Benzine and Naptha. 262-tf

C. F. SMITH & CO.,
BELLEVILLE, ONT.

Manufacturers of and dealers in

FRASER'S GANG PRESS and HOOPS,
Vats, Curd Mills, Curd Knives, Bandage, Rennet, Extract, Annatto, Scale Boards, and all other requisites. Prices low. Write us before buying. 267-c

THE INTERCOLONIAL Railway of Canada.

The Royal Mail, Passenger and Freight
Route between Canada and Great Britain

—AND—

DIRECT ROUTE BETWEEN THE WEST AND
ALL POINTS ON THE LOWER ST. LAW-
RENCE AND BAIE DE CHALEUR.

—ALSO—

New Brunswick, Nova Scotia, Prince Edward
Island, Cape Breton and Newfoundland.

NEW AND ELEGANT BUFFET SLEEPING
AND DAY CARS RUN ON THROUGH
EXPRESS TRAINS.

Passengers for Great Britain or the Continent, by leaving Toronto by 8.30 A. M. train Thursday, will join outward mail steamer at Halifax a. m. Saturday. Superior Elevator, Warehouse and Dock accommodation at Halifax for shipment of Grain and general merchandise.

Years of experience have proved the Intercolonial in connection with Steamship lines to and from London, Liverpool and Glasgow to Halifax, to be the quickest freight route between Canada and Great Britain.

Information as to Passenger and Freight Rates can be had on application to **ROBERT B. MOODIE**, Western Freight and Passenger Agent, 98 Rossin House Block, York Street, Toronto.

D. PUTTINGER,
Chief Superintendent.
Railway Office,
Moncton, N.B., Nov. 22nd, 1887. 267-y

THE LITTLE MAXWELL STEEL BINDER.

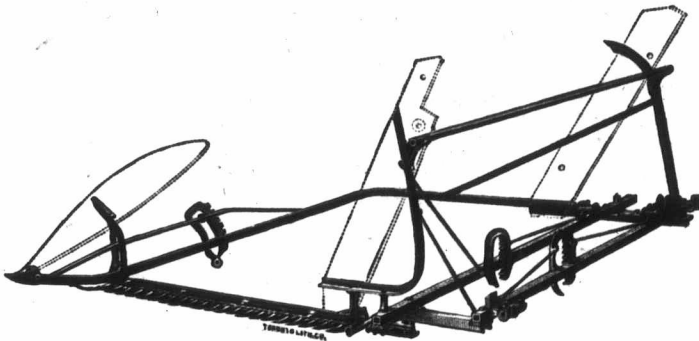


FARMERS!

If you want a binder you cannot do better than buy a "MAXWELL." It will bear the closest inspection; compare it with others and you will be convinced of its superiority. For handling down and tangled grain it has no equal, and the ease with which it is operated in every condition of ground and grain, has been the cause of remark by all who have used it. Any one who can drive a team can operate it.

Examine carefully the Frame of the "LITTLE MAXWELL." It is constructed entirely of steel and malleable iron, and is the strongest, stiffest and simplest Frame in the world.

Send for Circular, and mention this paper. Address



DAVID MAXWELL, - - PARIS, ONT.