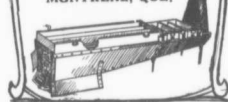


MAPLE SYRUP MAKERS

BE READY FOR THE FIRST RUNS OF SAP

One of our greatest difficulties we have is to make our many customers see the necessity of sending us their orders early in the season for their sugar camp equipment. The majority of them wait until the month of March, or just before sap runs, then expect their goods immediately. Don't put off ordering. Write us today for our free booklet giving you full particulars regarding Maple Syrup and Sugar Making.

THE CRIMM MFG. CO. LIMITED
52 Wellington St.
MONTREAL, QUE.



SYNOPSIS OF CANADIAN NORTH-WEST LAND REGULATIONS

Any person who is the sole head of a family, or who has made over 10 years old may homestead a quarter section of available Dominion land in Manitoba, Saskatchewan or Alberta. The applicant must appear in person at the Dominion Lands Agency, or sub-agency, for the district. Entry by proxy may be made at any agency, on certain conditions by father, mother, son, daughter, brother or sister of intending homesteader.

Disturbance of a homesteader upon cultivation of the land in each of three years. A homesteader must have within nine miles of his homestead on a farm of at least 160 acres settled owned and occupied by him or by his father, mother, son, daughter, brother or sister.

In certain districts a homesteader in good standing may pre-empt a quarter section alongside his homestead. Price \$1 per acre. Entries must reside upon the homestead or pre-emption six months in each of six years from date of homestead entry (including the time required to clear homestead patent) and cultivate fifty acres extra.

A homesteader who has exhausted his homestead rights and cannot obtain a pre-emption may enter for a purchased homestead in certain districts. Price \$10 per acre. Entries must reside six months in each of three years, cultivate fifty acres and erect a house worth \$500.

W. W. COBT,

Deputy of the Minister of the Interior.
S.—On advertisement of this advertisement will not be paid for.



"Metallic Rock Faced Siding Makes a Frame House Look Like Stone"

You can have any brick or stone design, and when in place Metallic Brick or Rock Faced Siding cannot be distinguished from genuine brick or stone. It is perfectly weatherproof—keeps a house warm in winter and cool in summer, and is fire and lightning proof. Our Metallic Siding can be laid quickly and easily entirely by yourself, and is very durable—will last a lifetime.

It also adds to the value of your property.

Write us for full information and suggestions for artistic homes.

PHONE PARK 800

MANUFACTURERS

1763

The Metallic Roofing Co. Limited
TORONTO & WINNIPEG

FARM MANAGEMENT

Queries re Alfalfa

I have three acres of alfalfa, this being its first year. The field is light in the middle. I cut the second time at each end, leaving it over the ridge. Will the seed there shell and help to reseed the land to make a thicker stand? Last year I had one acre of new seeded alfalfa. It appeared very thin, so I did not cut it until quite late, when it seeded. This spring it was all dead. Was this on account of cutting late and leaving the seed there, or on account of the severe winter?—W.H.C., York Co., Ont.

A considerable percentage of the alfalfa seed falling on the soil will germinate and produce plants the next season. We have a few instances of this happening on our experimental plots here, and possibly a good many of the old alfalfa fields in Ontario are renovated in this way.

In the second year the crop was rather young to cut for seed. Alfalfa plants are not full grown until the third year, and it would have been better to have let the crop go for another year before cutting for seed. It may have been that there was not sufficient growth before winter set in, and consequently not sufficient winter protection. Lack of good drainage would have been the cause of the crop killing out the second year. Alfalfa will frequently grow the first year on land where the drainage is not good, but after the first year, if the water table is too near the surface, it kills out very badly.—W. J. Squirrel, B.S.A., O.A.C., Guelph.

Dairy Notes

In spite of what has been published in the farm papers and urged by the dairy schools, there are yet comparatively few farmers who pay any attention to the proper cooling of milk.

Clean, properly cared for milk vessels play an important part in the production of pure and wholesome dairy products. Dirty pails, cans, and other dairy utensils mean dirty milk and dirty products.

There should always be a friendly feeling between the cow and her milker. The milker who is gentle with the animals in his charge and who takes time to pet them a little as he goes about his work will usually get all the milk the udders contain, while, on the other hand, the man who is rough and noisy is certain to lessen the milk flow materially.

The farmer who doesn't use a pure bred dairy bull in his herd will give you every reason but the right one

why he uses a scrub. The right one is that he hasn't gumption enough to get into better stock.

About Halter Breaking

James Armstrong, Wellington Co., Ont.

The proper time to halter break the colt is just when it is a few weeks old and easily handled. When riding along a country road in Peel Co., Ont., recently, I saw a sight that gave me the idea for this letter to Farm and Dairy. On one side of the road was a big yearling Standard colt with a halter on his head, and on the other end of the rope and on the other side of the ditch were three strong men trying to persuade him forcibly means that the ditch was neither too wide nor too deep for it to get over. After a great deal of pulling and tugging the colt was forcibly dragged into the ditch and went on to the other bank.

Had that colt, when two weeks old, been halter broken it would have followed anywhere without any difficulty. We are laying up trouble for ourselves when we allow a colt to attain strength far beyond that of the average man before we start to halter break it. If the young thing learns from the first that man is master there is no further difficulty.

Conference of Dairy Experts

The Dominion Conference of Dairy Experts will be held at Ottawa Dec. 6 and 7, 1911. The meetings will be held in the Dairy Commissioner's Office, 7th floor, Canadian Building, Slater street. The program is as follows:

Wednesday, Dec. 6.—Opening remarks by the chairman, J. A. Rudick. Address of welcome, Hon. Martin Burrell, Minister of Agriculture. Resolutions, Geo. A. Putnam and C. Chapa. Appointing committees. "The Pasteurization of Cheese Factory Whey," Frank Hems. Dr. F. C. Henshaw and Dr. G. G. Atherton will be present and take part in the discussion of this paper. "Methods of Paying Patrons of Cheese Factories," Prof. H. H. Dean. Discussion introduced by Geo. G. B. Barber. Legislation for the Proper Branding of Whey Butter," G. G. Publow. Discussion introduced by L. A. Zuleit.

Thursday, Dec. 7.—Maximum Acid in Pasteurized Cream," J. D. Leclair. Discussion introduced by C. W. MacDougall. "Testing Cream at Cream Gathered Creameries," J. F. Singleton. Discussion introduced by Henry Rive. "The Grading of Cream at Creameries," C. Marker. Discussion introduced by W. A. Wilson. Resolving and passing of resolutions.

Report of the Country Life Commission

That farming as an industry has not received the recognition in the United States that it deserves was the conclusion of the Country Life Commission appointed by the Theodore Roosevelt to make a thorough investigation into farming conditions in the United States. This commission brought to light many undesirable conditions in connection with rural life in that country, and made many recommendations for the remedy of these conditions, to which all who are interested in the welfare of agriculture should give thoughtful consideration. The report of this commission will be of interest to Canadian as well as United States readers, as conditions in the two countries are similar.

The report of this commission has now been printed in book form by the Sturgis and Walton Co., of New York. The book is nicely bound in cloth covers. The paper is good, the print large and easily read. All who are interested in farming and the farmers' problems will be interested in this book. Price, through Farm and Dairy, 75 cts., post paid.

Items of Interest

The following students will represent the Ontario Agricultural College in the judging competitions at Chicago Live Stock Show: Messrs. Clag McMillan, Stevenson, Toole and West. A special order from the United States Department of Agriculture provides that from now to December 6th, 1911, Canadian sheep may be imported into the United States for exhibition purposes at the National Live Stock Exposition without being subjected to the 30 days' quarantine provided they pass a satisfactory inspection at the port of entry and are accompanied by an affidavit of the owner or importer and a certificate issued by a Canadian official veterinarian. The same applies to other classes of animals.

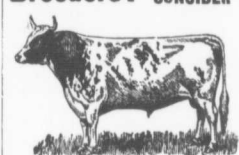
Wheat by Measure

I have a bin 10 ft. x 7 ft. x 6 ft. How many bushels of wheat will this bin hold?—N.R., Durham Co., Ont.

In a bushel of wheat (or of any grain) there are 2160 cubic inches. In the bin mentioned are 560 cubic feet, which figures out to 450 bushels.

Special cash commissions will be given to any subscriber who will get new subscribers to Farm and Dairy. Write us about this matter. These special commissions will make handsome returns for your spare time.

Breeders! DO YOU EVER CONSIDER



How Much You Have Lost

or how much business you do not get

Because Some One Does Not Know

you have for sale the stock they want and which they buy from the other fellow who advertises?

Take the progressive, paying way of getting buyers for your live stock—Advertise in Farm and Dairy.

Remember, our next Special Number is given over wholly to the Breeders' special interests. Be sure to have your advertisement in it.

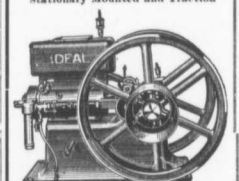
Send in your advertisement to-day and have it appear in this Breeders' Magazine Number, out in time for the Gueph Winter Fair.

FARM AND DAIRY PUBLISHED ONT.

GASOLINE ENGINES

11 to 50 H.P.

Stationary Mounted and Tractor



WINDMILLS

Grain Grinders, Water Boxes, Steel Saw Frames, Pumps, Tanks, Etc.

GOOLD, SHAPLEY & MUIR CO., LTD.
Brantford Winnipeg Calgary

The Feeders

The Feeders of our stock are interested in the quality of the feed they give. All questions will be answered.

Roots for

J. H. Gruda

If we compare a ton of alfalfa with a ton of any other feed, we will find it is equal to a ton of any other feed. It is up to the farmer to make the most of it.

If we compare a ton of alfalfa with a ton of any other feed, we will find it is equal to a ton of any other feed. It is up to the farmer to make the most of it.

If we compare a ton of alfalfa with a ton of any other feed, we will find it is equal to a ton of any other feed. It is up to the farmer to make the most of it.

If we compare a ton of alfalfa with a ton of any other feed, we will find it is equal to a ton of any other feed. It is up to the farmer to make the most of it.

If we compare a ton of alfalfa with a ton of any other feed, we will find it is equal to a ton of any other feed. It is up to the farmer to make the most of it.

If we compare a ton of alfalfa with a ton of any other feed, we will find it is equal to a ton of any other feed. It is up to the farmer to make the most of it.

If we compare a ton of alfalfa with a ton of any other feed, we will find it is equal to a ton of any other feed. It is up to the farmer to make the most of it.

If we compare a ton of alfalfa with a ton of any other feed, we will find it is equal to a ton of any other feed. It is up to the farmer to make the most of it.

If we compare a ton of alfalfa with a ton of any other feed, we will find it is equal to a ton of any other feed. It is up to the farmer to make the most of it.

If we compare a ton of alfalfa with a ton of any other feed, we will find it is equal to a ton of any other feed. It is up to the farmer to make the most of it.

If we compare a ton of alfalfa with a ton of any other feed, we will find it is equal to a ton of any other feed. It is up to the farmer to make the most of it.

If we compare a ton of alfalfa with a ton of any other feed, we will find it is equal to a ton of any other feed. It is up to the farmer to make the most of it.

If we compare a ton of alfalfa with a ton of any other feed, we will find it is equal to a ton of any other feed. It is up to the farmer to make the most of it.

If we compare a ton of alfalfa with a ton of any other feed, we will find it is equal to a ton of any other feed. It is up to the farmer to make the most of it.

If we compare a ton of alfalfa with a ton of any other feed, we will find it is equal to a ton of any other feed. It is up to the farmer to make the most of it.

If we compare a ton of alfalfa with a ton of any other feed, we will find it is equal to a ton of any other feed. It is up to the farmer to make the most of it.