

did not find any marked difference in the mortality of the two brooders. The hovers were attached to colony houses, and these in turn were placed about the poultry yards, in the College orchards, and in the farm cornfield. The chickens brooded by hens were placed in the same fields, and the method of feeding was the same for all.

Chicks from each incubator in a series were placed in the brooder. Each brooder had some chickens from all machines in the series, so that should the brooders vary, or the care be not the same, some chickens from each machine received an equal share, whether it was good or bad. It may be interesting to know that there was not in any series any marked

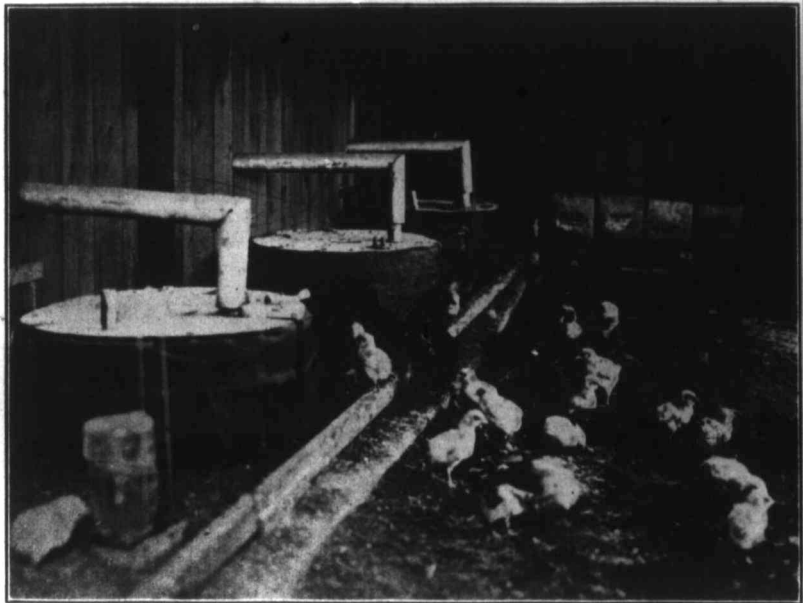


Fig. 2.—This cut shows the method of Brooding, etc.

difference between the different brooders used, but there was a marked difference in the hens used as brooders.

FEEDING

We tried to adopt a plan of feeding that could easily be used by most growers. I would like to call attention to the fact that these chickens were grown out-of-doors and not under hot-house conditions, such as we get in January, February, and March; and further, the plan about to be given is not satisfactory for winter use, mainly because the chicks do not get sufficient exercise.

The ch
old, but a
The p
was placed
Purina or
was kept
confined c
straying a
the chick fo

run near th
always tool
the board,
or three tim
cornmeal an
the cornmeal
aimed to gi
consisting o
cially for th
largely refu
to grow a