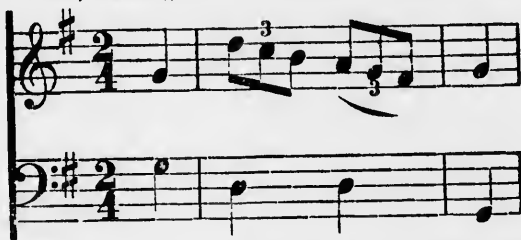


OF SOME LICENSES.

Q. What is the meaning of the figure 3 placed over or under three-quarters (*crotchets*), eighths, (*quavers*) or sixteenths (*semiquavers*)?

A. It signifies that the three-quarters (*crotchets*), eighths (*quavers*), or sixteenths (*semiquavers*), must be played in the time of two; of course a little quicker than usual; each group is termed a *triple*.



Q. What is the meaning of the figure 6 placed over or under six-eighths (*quavers*), or sixteenths (*semiquavers*)?

A. It signifies that the six-eighths (*quavers*) or sixteenths (*semiquavers*) must be played in the time of four of the same species.*



Q. Is the same rule observed with respect to other figures, as 5, 7, 9, &c.?

A. Yes; five-eighths (*quavers*) are played as four, seven as six, and nine as eight, of the same species.

* The figures 3 or 6 are often omitted, then the manner of grouping the notes indicates the mode of playing them.