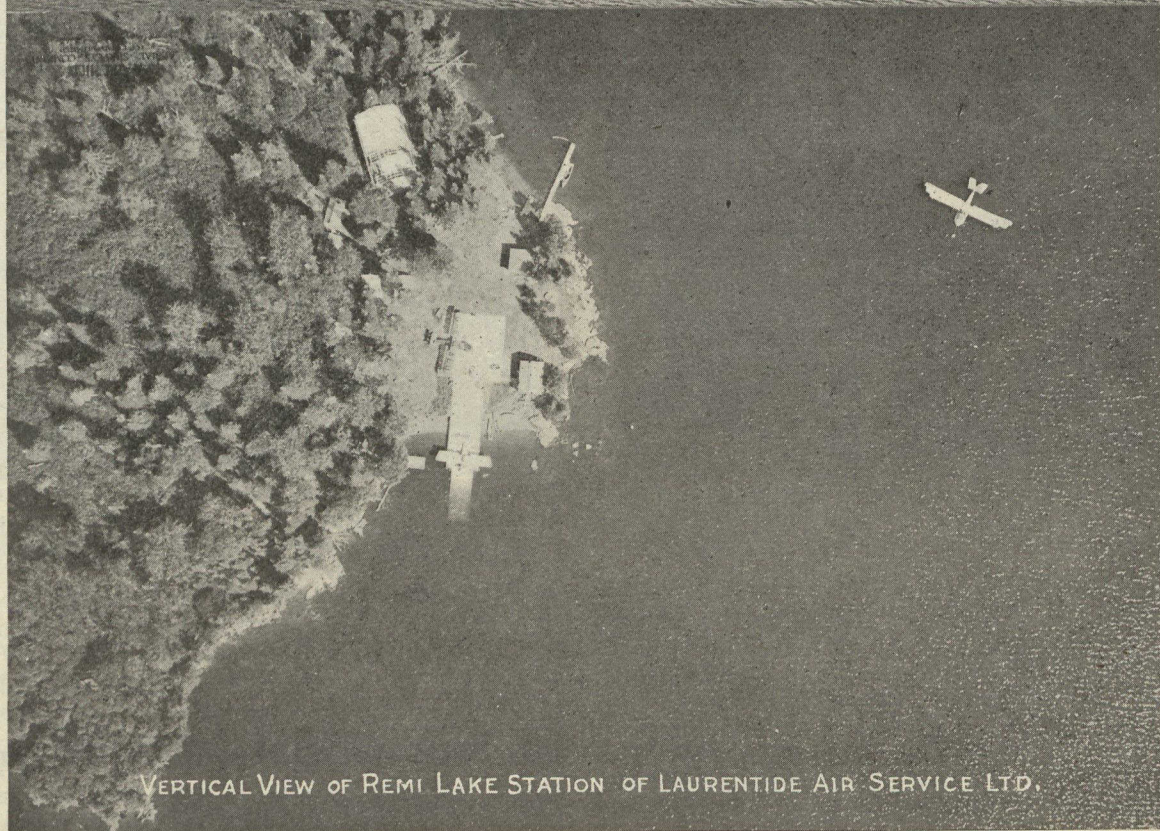




OBLIQUE VIEW OF REMI LAKE STATION OF LAURENTIDE AIR SERVICE LTD.



VERTICAL VIEW OF REMI LAKE STATION OF LAURENTIDE AIR SERVICE LTD.

These views show how clearly various kinds of trees can be distinguished from aerial pictures and how the number of trees in any given tract can be actually counted. Areas of different types of timber, burns, blowdowns, swamps, etc., can be accurately measured. As the whole area is covered results are more accurate.

Maps of properties can be made in far less time than by the old methods, and the cost is lower.

*Samples, estimates of cost, and full information given by*

**FAIRCHILD AERIAL SURVEYS CO. (of Canada) LIMITED**

**Associated with the Laurentide Air Service  
Grand'Mère, Québec.**