

Four "C.D.V." (half cabinet) photos, size 2 1/4 x 4 1/4 inches, for 25c—New Photo Gallery, Camera Section, Main Floor.

EATON'S DAILY STORE NEWS

GET ESTIMATES FOR INSTALLING Weather Stripped NOW—Second Floor, Furniture Building.

Apropos of Professor Parsons' Lecture on Old English Periods

Furniture In The Mellow Brown Oak of Elizabethan and Jacobean Times

Most Happily Placed in the Spacious Living-room or Dining-room, Especially the Room With Beamed Ceiling and Big Open Fireplace

This is Interesting

ANYONE inclined to croak over the artistic limitations of Toronto should see the painted furniture here and there throughout the Furniture Building at 221 Albert and James Streets. It proves true all the stories of its fascinations in the working out of schemes according to the principles of the New Art movement in interior decoration. There is a set of boudoir or sun-room tables and chairs in yellow and black enamel, painted with roses, the sight of which cheers you like a compliment or a bit of good news. A breakfast-room set of ivory enamel, painted with big pink petals, includes beside the table and chairs, the quaintest old china cupboard imaginable. As for the fern boxes, and old-fashioned rocking chairs, they are sheer delight to the eye that craves something bright and new and interesting to relieve the familiarity of one's daily environment.

And speaking of breakfast, we should not forget to mention the charming little sets of china for the breakfast tray of the invalid, or of her who takes life easily and remains a bed for her morning meal. They consist of cup and saucer, small plate, and of teapot, cream jug and sugar bowl, which may be stacked up one on top of the other in the most compact "three-in-one" style imaginable. The china is in plain all-over, self-tone effect, pink, blue, yellow or green, and the price for the set complete is \$2.95.

A real bit of antiquity come to life is the little dark oak fire-side box to hold his slippers when he shuffles them off to draw on his outdoor footwear. It is beautifully hand-carved with the motifs of the Elizabethan period, and is priced \$22.50. It will be found in the library of the furnished house in the Furniture Building.

If you want some jolly pictures for your children's nursery go to the Picture Department and ask for the series of Harry Rowntree's drawings. Each one portrays some delicious situation in animal life, with cunning pug dogs, precocious little kittens or frisky young foxes of rabbits playing the leading parts. They are reproduced in color, framed in dark oak, and priced at 55c each.

The Scribe.

THE PAGEANTRY OF THE DAYS OF QUEEN BESS and the Puritanism of the days of King James, King Charles and Cromwell—brush up your history and you will see the reflection of events in the sober magnificence of Elizabethan furniture, and the sturdy reserve of Jacobean.

Heavy structure and handsome carving characterize Elizabethan cabinet-making, the bulging leg being the most obvious feature. "Rope-turned" supports and a stalwart severity of line are the distinguishing marks of Jacobean styles. And how vividly the dark brown oak, rich and mellow, bespeaks the underlying earnestness of that age of adventure and conquest. There's a wealth of interest clinging to the furniture of these historic periods.

For the big dignified room of substantial type, furnishings in such old English styles are very justly popular. Hence a few suggestions from the superb showing of the same in the Furniture Building.

Jacobean Furniture for Libraries and Living-rooms

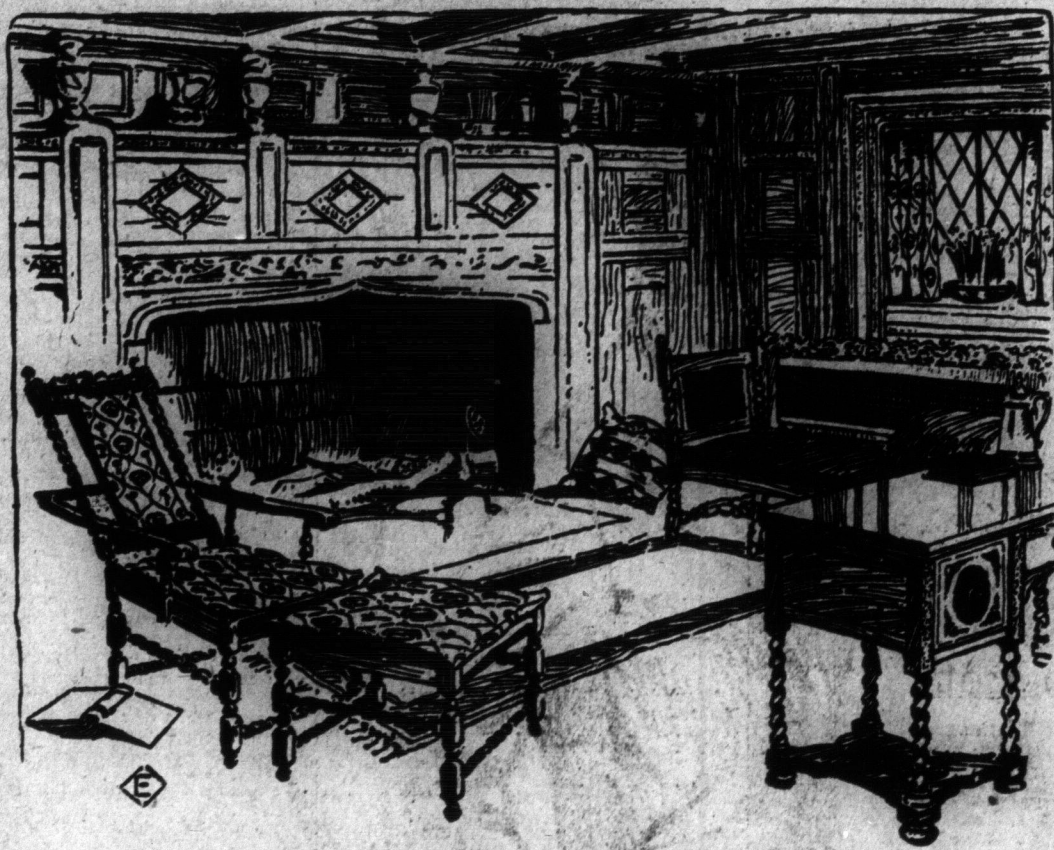
Hard to imagine a more interesting sofa than the splendid Davenport in the "Furnished Home" on the Third Floor. The long, wide frame is in brown oak carved in Jacobean style, six loose, flat, denim-covered cushions fitting snugly into the spring seat and cane-set back. It is a production of the famous Berkey and Gay, renowned from one end of America to the other for their peerless cabinet-making. The price of it is \$122, with the big arm chair to match, \$63.

A handsome library table with characteristic rope-turned legs is \$47.50. A charming book case in the same style, with four shelves and glass doors banded with oak, is \$75.00.

And down on the Main Floor of the Furniture Building is a delightful display of living-room pieces in Jacobean oak—quaint little gateleg tables for books or a tea tray ranging in price from \$16 to \$45; arm chairs inset with cane, from \$14.50 to \$69; magazine stands from \$10 to \$19; fern boxes on stands, from \$12.50 to \$23; pedestals from \$10.50 to \$18.50; and a charming little "trough" for books at \$13.50.

Elizabethan Furniture for Dining-rooms

A joy to behold is a low, long sideboard in mellow old cathedral oak fashioned and carved in the happiest old English style. The china cabinet and dinner wagon are built



That the style of the Jacobean period may be expressed in terms of modern comfort is seen in the sketch above. The twisted leg and carved scroll denoting the Flemish influence in this particular phase of old English cabinet-making are characteristic of the various pieces, prices for which are as follows: The Comfortable Extension Chair, without cushions, \$38.00; the delightful Couch in the background representing a living-room set, the other pieces being two arm chairs and a straight back chair, all-including settee—having loose cushions covered in green denim. Prices for four pieces, \$125.00.

along the same dignified lines, also the chairs which have cane seats and backs, and the round table. If a square drop-leaf table be preferred such may be substituted. This, too, is from Berkey and Gay, and is priced for the 10 pieces at \$285.75.

In the Grand Fall Display of Millinery

An Excellent Array of Untrimmed Velvet Shapes, and Ornaments with Which to Adorn Them

IN THE FORMER there are many smart shapes, tams, and pokes, sailors, round and oval, flat shapes, with three and four corners; those turned directly off the face; those distinctly of Napoleonic shape; indeed, there are practically all the shapes you could fancy; colors are purple, green, brown, navy and black.

Metallic Trimmings are still enjoying an immense popularity, and to supply this demand we have a collection of charming ornaments. There are birds and beetles, bugs of queer shape, swans and many novelties. They are made in bead and embroidered effects, with generous sprinklings of silver and gold thread.

Ribbons, too, in many new effects, featuring extensively corded ribbons in the most required colors, as well as black, silver and gold.

Flowers and Fruits are also quite in evidence, and have some very lovely effects in both shape and shade.

New arrivals have come to hand of various wings and mounts, many pretty imitation osprey and heron, pheasant bands, in natural, purple, green and black, and other smart mounts, which would form the sole trimming of a hat.

—Second Floor, Yonge St.

From clever Canadian manufacturers is a most attractive dining-room set in Elizabethan design, showing characteristic panelling and turned legs. Besides the interesting-looking wide, low sideboard, in the set are china cabinet, round table and six chairs with cane backs and leather seats. Price for 9 pieces, \$389.00.

—Furniture Bldg., cor. James and Albert Sts.

English China Pieces Thursday at Rush Prices

THE only reason for offering these pieces at these prices is that some of them have slight imperfections in the decoration, but you can hardly notice it. The pieces are decorated in a light blue Indian tree decoration, have gold traced edges and handles, and a brilliant glass over strong white body. The assortment includes tea-cups and saucers, each 12 1/2c; breakfast cups and saucers, each 20c; tea plates, each 15c; breakfast plates, each 15c; cake plates, each 20c; platters, \$1.00; platters, \$1.25; oval pickle trays, each 20c; covered mullin dishes, each \$1.00; slip bowls, 20c; marmalade jars, each 55c; hot water jugs, each \$1.25; open sugar and cream sets, pair 20c; cream jugs, each 35c; half-pint jugs, each 35c; teapots, each 65c.

—Basement.

Tapestries and Linens Are The Textiles To Use

Especially When Walls Are Plain. When Walls Are Patterned Then Choose the New Mohair Kells Cloth or the Silky Apsley Cloth in Self-tones

THE TEXTILES of the Elizabethan period are dark, rich tapestries, velvets and damasks. Printed linens huge in pattern and scale and scrawly in motion, are characteristic of the Jacobean period. So says Professor Parsons, and any decorator of authority will support the idea.

Wherefore it behooves us to draw attention to the magnificent showing of tapestries now on view in the Drapery Department—verdure, conventional and fruit effects, besides many successful reproductions of old Italian designs.

Blue, brown, green and old rose are the chief colors employed, mingled and toned in wondrously soft, soothing manner. For the covering of the big Chesterfield, and the arm chairs, which are an invariable part of the living-room or library, and for the making of portieres or curtains, such tapestries enjoy an immense favor. They are 50 inches wide and range in price from \$1.00 to \$3.50 per yard.

In printed and hand-blocked linens there is enormous selection—linens in the bold dignified designs demanded by old English styles of decoration. The color choice is practically unlimited. 50 inches is the average width and prices run from \$1.50 to \$4.50 per yard.



As a plain fabric for all manner of upholstery, Kells cloth enjoys well-deserved favor. It is a mohair weave of pebbled surface and is available in charming tones of deep blue, green, brown, tan and rose. 50 inches wide—price, \$1.50 per yard.

As for the new Apsley cloth, it is a thick wool fabric with silky crepe-like finish—admirable for handsome upholstery where a self-tone effect is required. It is featured in the same width and colors as Kells cloth, and is priced \$2.50 per yard.

—Fourth Floor, Yonge St.

The Grand Fall Exposition of Furniture and House Furnishings

Will Continue on Thursday on the Fourth Floor of the Store and throughout the Furniture Building, Corner of James and Albert Streets

with a superb display of everything interesting, artistic and convenient for the equipment of the house, flat, club or public institution.

Among the Special Attractions are the lectures by

Prof. Frank Alvah Parsons in the Special Auditorium in the Yonge and Albert Street Section of the Fourth Floor, the subjects for Thursday being as follows:

Thursday, 10 a.m.: Old English Periods and Their Present Application—Jacobean, Elizabethan, etc.

Thursday, 2:30 p.m.: 18th Century English Styles and How to Use Them.

Tickets are Obtainable at the Ticket Bureau, Fourth Floor, Centre.

Also the Exhibit of House Furnishings

In Historical Period Styles in the Drapery Department, Fourth Floor.

Tapestry Papers to Replace Old Needlework Tapestries

And As a Background For the Rich Brown Oak of Elizabethan and Jacobean Furniture How Happily They Serve

NOT EVERY HOUSE boasts the oak panelled walls of the Seventeenth Century. But the spirit of the old needlepoint tapestries, which were hung over the paneling, may be most successfully revived with the use of these papers which reproduce so cleverly the dim old tapestry colorings and mediaeval patternings. They create a most satisfying background for Elizabethan and Jacobean furniture, especially when placed above a dark oak wainscoting.

Foliage and landscape effects are available in a host of softly blended combinations of green and blue, green and brown, tan and brown, tan and gray, and brown and gray, and with generally a gleam of yellow to offset the possibility of gloom. For hall, library or living-room furnished in Old English oak they present immense attractions.

In the immense selection of tapestry papers, the widths range from 18 to 30 inches, and the prices from 25 cents to \$2.50 per roll of 8 yards.

—Fourth Floor, Queen St.

Ask Adelaide 5000 For "General Order Department"

when telephoning to the Store for merchandise from more than one department. This will enable you to give your whole order at once, saving you considerable time and trouble.

THE T. EATON CO LIMITED