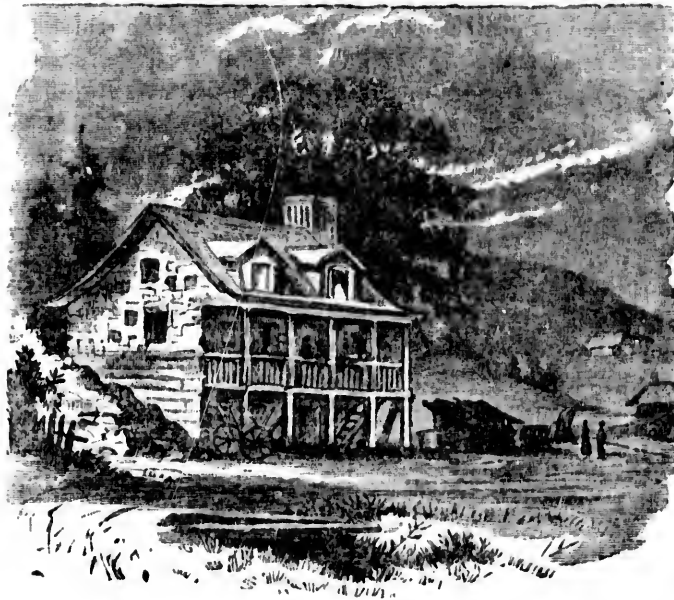


Railway is crossed and the train proceeds past St. Henry Village, St. Anselme, St. Henedine and Scotts Stations ; these are points of little interest and the line presents a sameness in its general scenery ; the villages and hamlets are decidedly French in character, and are generally made up of small buildings ; the better class are painted white, having red roofs ; and prominent in the distance appear the tin-covered



A FRENCH-CANADIAN HOME.

spires of the Catholic churches. After leaving Scotts Station the Valley of the Chaudiere River is entered ; this valley has been immortalized by Gen. Arnold's memorable winter march on Quebec in 1775, and is now noted for its celebrated gold mines. We now arrive at Ste. Mary, a delightful little town situated on the south shore of the Chaudiere River, and stretching along its bank some three miles, the meadows being annually inundated by the overflowing of the river ; the soil about here possesses superior fertility. Ste. Mary has a number of large mills and an extensive butter and cheese factory ; a spacious convent is erected