

The first observations were taken during the evening of Nov. 25, 1908, and are recorded in Table III. During the readings the barometer was practically stationary and stood at 753 mm. The curve in Fig. III illustrates the readings taken. The mean value of the readings it will be seen was 15.95 ions. In no case was there a deviation from the mean value of greater than 3%, and the curve shows no evidence of any marked variations which might be ascribed to changes in the radiations which contributed to the conductivity of the enclosed air.

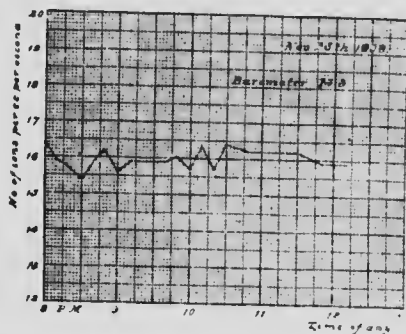


FIG. 2.

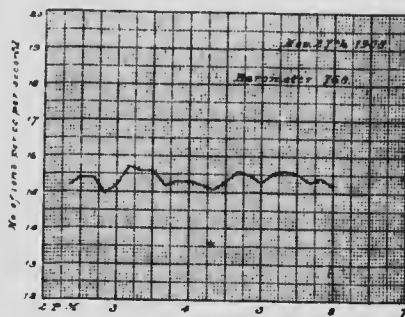


FIG. 3.

Similar sets of observations were taken on the afternoon and evening of Nov. 27, 1908. These are recorded in Tables IV and V, and illustrated by the curves shown in Figs. III and IV. Here again it will be seen that the extreme deviation from the mean value did not exceed 3.5%. Moreover, the variations which did occur represent practically the limits of accuracy with which the readings could be taken by the measuring instrument.

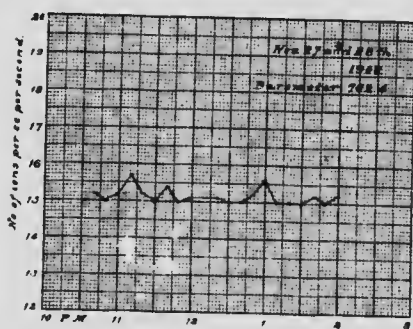


FIG. 4.

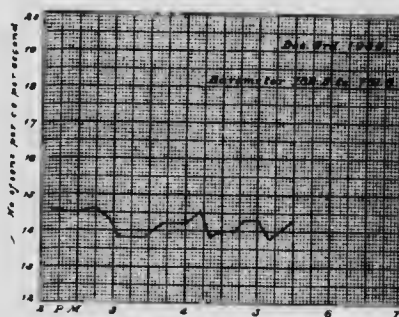


FIG. 5.

Again, sets of observations were taken on the afternoons of December 3, 4 and 7. The results are recorded in Table VI, VII and VIII, and the corresponding curves are given in Figs. V, VI, and VII. From these it will be seen that in one case the deviations from the