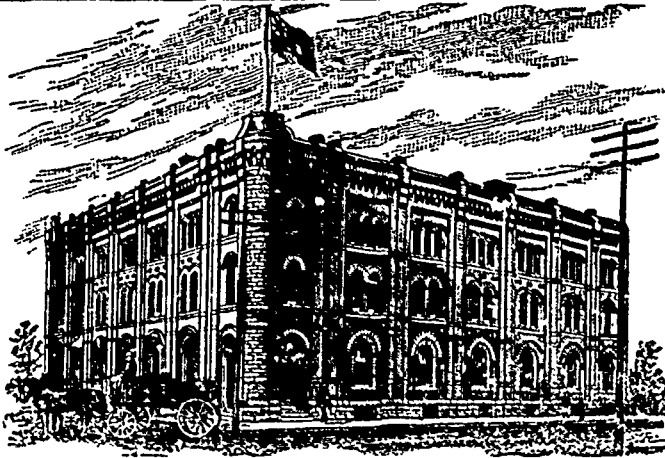


GOODS SOLD TO THE
TRADE ONLY.GOODS SOLD TO THE
TRADE ONLY.

G. F. & J. GALT,

DIRECT IMPORTERS

TEAS, SUGARS, WINES, LIQUORS and GENERAL GROCERIES
CORNER PRINCESS AND BANNATYNE STREETS, WINNIPEG, MANITOBA.

In fact if each one would send the amount of wheat raised last year and have it published, it would be a surprise to many and would be productive of good results, and would do a great deal to refute the often expressed idea that this country cannot raise wheat, and they would thus do a great deal towards having a flour mill erected in the vicinity.

Assiniboia.

H. J. Ruffles, druggist, Moosomin is dead.

J. E. Welsh has opened a grocery store at Moose Jaw.

J. F. Mowat lately burned out at Regina is opening out with a new stock of dry goods.

THE estate of Annable & Co., general merchants, Moose Jaw, will be offered for sale on the premises, on April 23, by auction. The stock amounts to \$5,036, and book debts \$1,700.

L. C. ROGERS is opening in the boot and shoe line at Regina. He will also carry a stock of furnishings. He takes over the bankrupt stock of W. G. Watts, boots and shoes, Regina. L. C. Rogers is a brother of Geo. H. Rogers, merchant, Winnipeg.

Northwestern Ontario.

Machinery is arriving for the reduction works at Rat Portage.

The Ontario Government has granted \$4,500 to bridge Portage Bay at Keewatin; also \$1,000 to improve the roads between Rat Portage and Keewatin on condition that each municipality grant \$250 for the same purpose.

The Canadian Pacific Railway says the Port Arthur *Sentinel* has over 2,000 tons of Manitoba flour stored here and the lower floor of the elevator is being filled with more, all of which will be shipped by their steamships on the opening of navigation.

Rat Portage people want the Ontario Government to buy off the lease of the Lake of the Woods islands to the Keewatin Lumber Company. A petition is being prepared upon the subject. The Rat Portage *News* says: "The lease held by the Keewatin Lumber Company of all the islands south of the steamboat channel in the Lake of the Woods is the cause of considerable annoyance to miners and those desir-

ous of settling on islands. In some cases well known to everyone here, improvements have been made on islands and after considerable outlay has been made the whole has been confiscated for trespassing. The Sultana island now being contested is another injustice to the public owing to the lease."

Dairy Matters.

C. F. Burrows expects to commence operating the cheese factory at St. Leon, Man., the 1st of next month. The patrons of the factory own about 150 cows.

The Manitoba cheese factory will be conducted this season by H. Rockett, who has been engaged to manufacture at 3½ cents per pound. S. Cruthers has been appointed treasurer and S. E. Watson, secretary. Following is the report of the working of the factory for last year as submitted by the auditors:—We find that the total number of lbs of milk received at the factory from the 6th day of May to the 30th day of September, 1889, were 379,650—much the greater amount received any month being in July. From the above quantity of milk there were manufactured 38,730 lbs of cheese, or 642 boxes, being an average of 60.32 lbs per box. The total value of cheese manufactured was, \$3,513.43; total cost and charges in manufacturing, \$1,229.05; net value, \$2,284.38. Number of lbs of cheese sold to merchants, 35,386; do. patrons, 3,344; total lbs of cheese sold, 38,730. Value of cheese sold to merchants, \$5,192.68; do. patrons, \$317.99. Total value of cheese sold, \$3,510.67. Gross average value of cheese per lb, .09064c; net average value of cheese per lb, .0589c; entire cost per lb in manufacturing, .03172c. The average number of lbs of milk required in the manufacturing of a pound of cheese during the season was 9.80. The total loss in weight of cheese through cutt ½ for patrons was during the whole season 32 lbs. The net value realized per 100 lbs of milk over all expenses of charges yielded an average of 60 17-100ths cents. The whole cost involved in running the factory, exclusive of the manufacturers' price of 3 cents per lb of cheese, has amounted to only a trifle over 17-100ths of a cent per lb of cheese manufactured, which we consider very low indeed, and is made

GLOX!

We have just received one car load of the Best American Clocks which will be Sold at below Montreal Prices.

Call and get quotations or send for Samples.

W. F. DOLL,

Wholesale Jeweler,

625 Main Street, WINNIPEG

up of such items as the following: Secretary's fee, \$42.50; stationary and printing, \$8.05; telegraphing, 85 cents; balance of rent \$10. Total running expenses, \$61.40.

Personal.

Jos. Tasse, of Tasse, Wood & Co., Montreal, was in the city last week.

J. H. Glass, of Stevens, Glass & Clarke, manufacturers of boots and shoes, London, Ont., arrived in the city last week.

Alex. Fraser, better known as Scndie, and a favorite among the gentlemen of the road, arrived in the city from the east last week.

Mr. Clearihue, representing Jas. Hall & Co., manufacturers of gloves, moccasins, etc., Brockville, Ont., was in Winnipeg last week on his return from the west.

Montreal Journal of Commerce: It has finally been decided by the creditors of Isbister Bros., general storekeepers of Petrolia and Port Arthur to wind up the estate. An offer of 40 cents in the dollar was made, but the affairs of the firm were so complicated that the former course was preferred.

The fifty-fourth annual meeting of the proprietors of the bank of British North America was recently held in London, when the net profits were shown to be slightly less than the previous year, being £84,668 as against £85,058. The directors decided to pay the usual dividend, 7½ per cent, and to add £5,000 to the reserve. This fund now reaches £255,000. The officers' pension fund, started four years ago, was increased by the addition of £2,000, and now exceeds £6,000. The year 1889 was an uneventful one in the history of the bank. Discount rates in America, it was stated, had been much the same as those of the previous year. Higher rates prevailed in London during the latter part of the year, but they did not affect the bank's profits very much, as nearly all its resources were employed in Canada. A deserved compliment was paid to the officers of the bank, and the result arrived at by the meeting was that the character of the bank's business had maintained its high standard and been in all respects satisfactory to the proprietors.