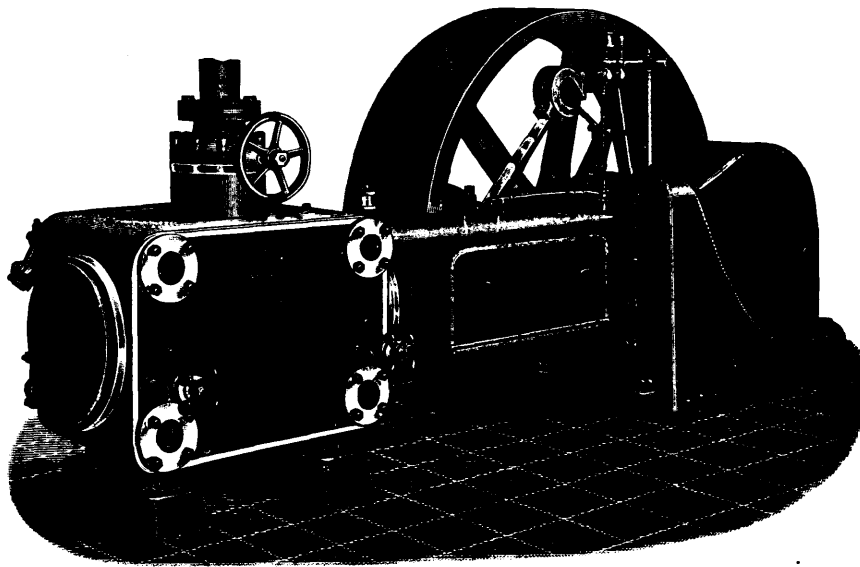


CORLISS ENGINES



Our Corliss Engines are fitted with Robb-Armstrong Corliss Valve Gear, which has the following good points :

POSITIVELY DRIVEN

RUNS NOISELESSLY

ENCASED IN OIL

MINIMUM FRICTION

MINIMUM WEAR

ROBB ENGINEERING CO., LTD., AMHERST, N.S.

DISTRICT OFFICES

320 Ossington Avenue, Toronto, WILLIAM McKAY, Manager.

Bell Telephone Building, Montreal, WATSON JACK, Manager.

355 Carlton Street, Winnipeg, J. F. PORTER, Manager.