

tinguished. The pruner should be able to tell from the fruit scars and blossom scars on what years the trees have blossomed, when fruit set, and whether the fruit properly matured, as indicated by the character of the fruit scar. By comparing these evidences of fruitful and non-fruitful years with the amount of growth made each year and with the

kind and degree of pruning which was done in any season, he may reason out for himself the proper pruning to pursue in order to secure a given result. In other words, the best book on pruning is to learn to read the life history of the tree, during all its past, by the characters which are plainly written on its twigs and limbs.

Prune back the remaining ones to within a few inches of the old wood. The shoots from the base of the bush may be cut back to about fifteen inches from the ground. Shoots that spring from points below this should be removed. Climbing roses may be cut back as desired. If pruned regularly, they will become more compact and will bloom more profusely.

Plants that have been started from seed in the house should be hardened-off before transplanting to the open. Expose them for a few hours a day to outside influences.

Sow seeds of nasturtiums, balsam and portulaca after the middle of the month. The latter is an excellent hot weather plant. Sow sweet peas. There is more danger of being too late with these than too early.

Corms of gladioli may be planted towards the end of the month or early in June. Plant them three or four inches deep and about six or eight inches apart.

Secure and plant some new perennials

Lawn and Garden Hints for May

THE busiest month of the year for gardening is May. Plants that have been started earlier in the season must be watched carefully and there are scores of different kinds of plants and seeds that should go in the ground now. Sow your plants in straight lines so that cultivation may be performed easily and to have neatness and order. If you have not yet purchased all the

the following day, the plants may have to be shaded.

Sow radish seed in good soil. To have them crisp and tender, apply a little commercial fertilizer to make them grow rapidly. To have a continuous crop, sow the seeds every ten days or two weeks. A good variety is Scarlet White-topped Turnip.

Among the best varieties of lettuce are Big Boston and Black-seeded Simpson. For parsley, sow Double Curled. There are many good varieties of peas, including Gradus, Heroine and Stratagem. An excellent carrot is Chantenay. Two of the best onions are Yellow Globe Danvers and Large Red Wethersfield. One of the best parsnips is Hollow Crown. The best early beet is the dark Egyptian.

Keep the surface soil of the vegetable garden well stirred and cultivated. Do not allow the weeds to get a start.

WITH THE FRUITS

Every home garden should have a few strawberry plants. Choose varieties that have perfect blossoms. If an imperfect flowering variety is preferred, there must be planted near it some plants with perfect flowers to fertilize the others. There are many excellent varieties. Those that do well in some localities often are failures in others. Ask a neighbor who has been successful with strawberries for the names of kinds that have done well with him. The blossoms should be removed from the plants during the first season of growth.

Remove the mulch from the old strawberry bed and leave it between the rows. It will help to save the moisture, to prevent the fruit being splashed with earth during rains and to make the work of picking cleaner for yourself.

If the garden is large enough, it should contain a few bushes of gooseberries, currants, raspberries and blackberries. Plant them now.

Watch the currant and gooseberry bushes for worms. Dust the plants with powdered Hellebore or spray with one ounce of Paris green to about ten pounds of water.

THE FLOWER GARDEN

If your rose bushes have not yet been pruned, do it now. The best time is just as the buds are starting into growth. Cut out the dead and weak branches.



Maple Trees Butchered to "Clear" Wires Overhead

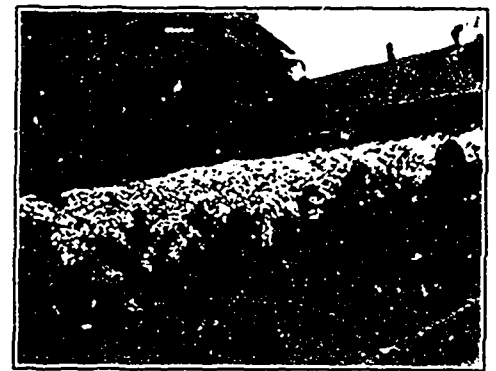
The beauty and usefulness of street trees in our towns and cities are being destroyed by telephone and traction companies. This reckless destruction should be stopped.

seeds that you require, be sure to get only the best. A difference of a few cents or dollars in cost now will make a great difference in results.

THE KITCHEN GARDEN

The soil for vegetables should be dug deeply, and made as fine as possible for the reception of the seeds. When digging, work in plenty of well-rotted stable manure. If wood ashes are available, give an application of them also. The hardy varieties and kinds of vegetable seeds should be sown now. Sow in freshly stirred soil. Seeds require less depth of covering in spring than in summer. Seeds of beets, carrots, parsnips, and beans will germinate more quickly if they are soaked over night. Cucumber, squash, melon and corn should not be planted until all danger of frost is past.

The best time for transplanting is on a cloudy day or late in the afternoon or evening of hot days. If the sun is hot



A Hedge of Spiraea Van Houttei
Residence of Mr. Richard Devlin, Ottawa

in the herbaceous border. This class of plants are always interesting.

ON THE LAWN

Repair the bare patches on the lawn by seeding or sodding. If sods are to be used, cut a square area about the injured patch, and remove the old sod surface and soil from within this square to the depth of a sod. Roughen the surface of the soil with a rake. Lay the sods in strips closely together. Pound firmly with the back of a spade, water immediately and continue the watering until the new sod has made a union with the soil beneath.

For seeding a lawn a good mixture is Kentucky blue grass, Red Top and White Dutch clover, equal parts by weight. Sow at the rate of one quart to the square rod.

Trim the evergreen hedge just before growth starts. Never prune back of the growing twigs. A hedge must be clipped regularly each year.

To be satisfied with our work in transplanting, it is not sufficient to make a tree live, but it must grow.