

# A. & S. RODGER'S GREAT BARGAIN SALE IN FULL SWING.

ALL RECORDS BEATEN.

THOUSANDS OF GENUINE SNAPS STILL AWAIT YOU.

SPECIAL TO-DAY:

## Curtain Nets.

Regular 12c. To-day - - - 9 cts. yard.  
Regular 14c. Now - - - 10 cts. yard.  
Regular 18c. During Sale 14 cts. yard.  
Regular 20c. Only - - - 16 cts. yard.

## Flannelettes.

Usual 10c. value, for - - 8 cts. yard.  
Usual 12c. value, for - - 9 cts. yard.  
Usual 14c. value, for - - 10 cts. yard.  
Usual 18c. value, for - - 14 cts. yard.

See the extraordinary values offered in Madras Muslins, Spot Muslins and Lace Curtains.

A. & S. RODGER, Water Street.

Hardware  
Dept.

Carriage  
Harness

Hardware  
Dept.

What about your Carriage Harness this winter? We have just opened a few handsome Sets, that are well worth your inspection, at prices that will tempt you to buy.

**Electro Plated and Brass Mounted  
English Carriage Harness.**

**Sleigh Bells,  
Body Straps,**

**Rattlers,  
Shaft Chimes,  
Saddle Chimes.**

**BOWRING BROS., LTD.**

**Second-Hand FURNITURE**

Bought and Sold.

**Shop Blinds,**

Any size, any color,  
Lettered or Plain,  
Made to order.

**N. W. CHOWN,**

nov12,tf

37 Prescott Street and 7 New Gower St.

Advertise in The People's Paper.

**USE  
Texaco**



MINARD'S LINIMENT CURES GARTER IN COWS.

**THE POPULAR STORE**

CARRIES

The Popular Goods.

See our Display of

**SOLIGNUM**

In the Eastern Window of our Hardware.  
We carry the genuine article.

NO IMITATION.

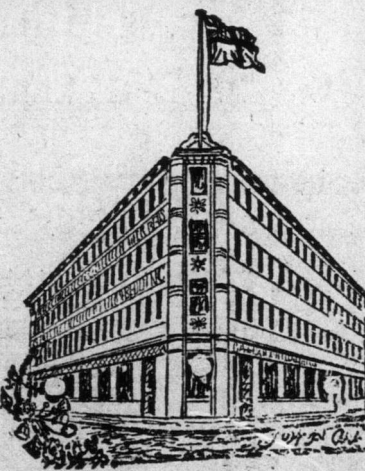
**Bishop, Sons & Co., Ltd.**

PHONE 617 and 679.

**The Big  
Furniture  
Store.**

A splendid showing of  
DINING AND KITCHEN CHAIRS.  
We are showing a line of Kitchen and  
Dining Room Chairs that have com-  
petition "skinned to death."

We offer values that simply can't  
be excelled.  
Our immense buying facilities, cou-  
pled with our small expenses, are  
largely responsible for the advan-  
tages our showing offers the shrewd  
purchasers. We invite inspection.



CALLAHAN, GLASS & Co., Duckworth and Gower Sts.

**Lumber and Builders' Supplies**

Our stocks were never more complete than they  
are now. Everything from

**SILL TO SADDLE**

IS OUR MOTTO.

**Horwood Lumber Co'y, Ltd.**

*The New  
Styles*

Are now ready for your inspection. We re-  
spectfully invite your early visit to see a grand  
selection of Men's and Youth's Suitings and  
Overcoatings.

The High Standard which we have set in past  
seasons, combined with recently added facilities,  
enable us to pronounce our Fall showing most  
excellent.

**CHAPLIN,**

THE STORE THAT PLEASES.

sep28,s,m,w,tf

**Ask Your Shoemaker**

to put

**ENGLISH**

**Oak Tanned LEATHER**

soles on your boots.

They wear better, resist the water better, and are more  
comfortable than soles of Hemlock tanned leather.  
Whole sale only at

**ROBT. TEMPLETON'S.**