

Guelph's Public Bodies

Her Municipal, Educational, Commercial, Charitable and Military Interests

And the Men Who Promote Them

Guelph's Civic Government.

St. John's-Ald. Taylor, Crossbie, Dowling.
St. David's-Ald. Sully, Newstead, Schultz.
St. Andrew's-Ald. Grogg, Hendley, Mahoney.
St. James-Ald. Hartnett, Peterson, Hearn.
Mr. Richard Mitchell is City Clerk; Mr. E. Harvey, Treasurer; Mr. John Hutton, Collector; Mr. Wm. Hart, Assessor; Mr. F. W. Randall, Chief of Police.
The City Hall is the centre of public business. It is a handsome and substantial structure, erected in 1856, at a cost of \$45,000, but since materially enlarged. At present an extensive addition to the market building is in course of erection. The waterworks are the property of the city, and are now a profitable investment. There are 17 miles of pipe laid, at a cost of \$100,000, and the average daily amount pumped will aggregate 500,000 gallons. The supply is one of the purest to be found in Ontario, the mains being fed directly from springs, and there is no doubt but that the high health record of Guelph is in a large measure due to the purity of its water supply. The waterworks are under the direction of a committee of the Council.
Guelph has an excellent fire brigade. The apparatus consists of a steam fire engine, for the outlying parts of the city, hose wagon with small chemical engines, 3 hose reels, hook and ladder truck, and horses kept exclusively for fire purposes at the fire hall, 3,000 to 4,000 feet of first class hose, 14 telephone stations on separate circuit, connected with central telephone station, and use of 250 private telephones, automatic alarm for tower bell, 120 fire hydrants with a pressure of 80 to 120 lbs., from four boilers and two pair of engines and pumps at the waterworks.

MAYOR LAMPREY.

Guelph is governed by a Mayor and eighteen Aldermen, each of the six Wards in the city having three representatives at the Council Board. The present occupant of the chief magistrate's chair, is Mr. John A. Lamprey, a son of one of the earliest settlers in Guelph. The Aldermen for the year 1895 are:
St. Patrick's Ward-Ald. Coffey, McHargy, Stull.
St. George's-Ald. Hower, Macdonald, Parkinson.



CITY HALL BUILDING, GUELPH.

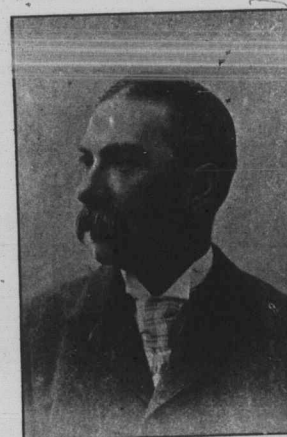
Board of Trade.

An active factor in the promotion of Guelph's prosperity in recent years has been the Board of Trade. In the removal of grievances under which its merchants or manufacturers might be suffering, and in the promotion of new industrial enterprises, the Board of Trade has done good work. Mr. James Watt is president of the Board; Mr. J. E. McElderry vice-president and Mr.



PRESIDENT WATT.

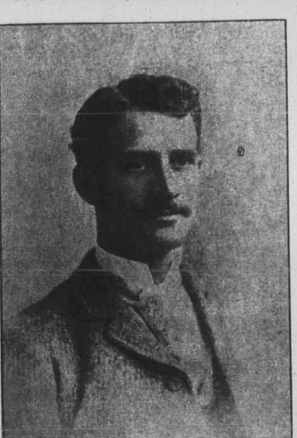
Andrew Scott discharges the duties of Secretary. In their labors these gentlemen are assisted by a council of twelve members.
The great usefulness which the Board



VICE-PRESIDENT MCELDERRY.

of Trade is accomplishing in Guelph has been strikingly demonstrated even in the past year or two. The idea of an electric street railway first originated with that organization and was by it referred to the City Council for action. But for the Board of Trade and the active forces it called into requisition, the Guelph Railway Iron and Steel Co. would probably never have been formed. So, too, was it enabled to render the city a great service in smooth-

ing out the difficulties that stood in the way of the Laughlin, Hough & Drayton Table Co. establishing their factory in Guelph. The great question of sewerage has been pressed upon public attention by the Board and any advance that has been made towards the accomplishment of the much desired project is due, largely to that body.



SECRETARY SCOTT.

Educational Institutions.

In educational matters, Guelph is second to no city in the province. The Central School of which an engraving appears elsewhere, accommodates 1,000 pupils. It is an imposing structure and occupies a most commanding position; its cost was \$90,000, now all paid for. There are also six ward schools, the latest addition being the fine stone building in St. George's ward, erected in 1892, at a cost of \$10,000. The collegiate institute, with its spacious gymnasium and extensive grounds, is also an ornament to the city. The institution is fully equipped and its record at the departmental examinations is exceptionally high. The public school includes a commercial class, where a two years' course in commercial subjects is given. The Separate Schools are under the charge of the Sisters of Loretto Convent and are conducted with marked efficiency. The total roll attendance at all the Guelph schools is 2,400.
The Public and Separate Schools are Governed by boards elected by the people at the municipal elections. In addition representatives for the Collegiate Institute are chosen by the City Council.

The members of the Board of Education are: Peter Anderson, chairman, James Cormack, Hugh McMillan, Jno. A. Davidson, Dr. MacKinnon, James Watt, E. H. Hutton, A. H. Dieke, Wm. Carroll, S. Broadfoot, W. Knowles, H. W. Peterson, Alfred Smith, William McLaren, Alex. White, C. W. Kelly, Wm. Springour and Robert Johnston.
The Ontario Agricultural College is composed of the following: J. E. McElderry, chairman; John Harris, Felix Devlin, M. J. Deignan, Dr. Nunan, C. Klopfer, J. C. Keisler, M. J. Doran, James Ryan, M. Purcell, Frank Nunan, and Edward Doyle.
The Ontario Agricultural College and Experimental Farm, the property of the

Ontario Government, is commanding situated about one mile from the city on the Brock Road. The farm in connection with the institution consists of 550 acres, 313 being worked as an ordinary farm, 190 in experimental plots, and the balance in lawn, garden, bush, etc. Under the direction of Hon. John Dryden as minister of agriculture, the equipment has been greatly increased and now consists of large and commodious farm buildings, with all modern improvements; the most advanced facilities for instruction in agriculture, dairying, chemistry, botany, horticulture, etc.

The Guelph free public library was the first to be established in Ontario under the Free Library Act, its citizens ever being foremost in educational matters. It is centrally located and is largely patronized. The number of volumes at the end of last year was nearly 8,000 and a great many have been added since that time.
The position of the large and commodious Loretto Academy is unsurpassed as regards beautiful situation. This popular school, to which every year comes pupils from the most distant parts of Canada and the States, is making steady progress. Besides the collegiate course of study, pupils are at liberty to follow the curriculum for the departmental examinations. The course of instruction in music and art is very thorough, as is evidenced by the presence of 100 pupils in these classes. Six sisters assist in the teaching of the academy.

The Judiciary.

HIS HONOR JUDGE CHADWICK.

Austin Cooper Chadwick, Judge of the County of Wellington, comes of a very old Irish family. He was born in the Township of Ancaster, Nov. 18, 1842. He entered Guelph Grammar School in 1861, and the Law Society in 1868. He was admitted a solicitor in 1868 and called to the bar in February, 1874. He practiced for a short time at Mount Forest, and afterwards at Toronto for some time. He was appointed Junior Judge of Wellington County, January, 1878, Local Judge of the High Court of Justice in 1882, and Senior Judge of Wellington County in December, 1891.

Judge Chadwick enjoys the confidence of the public and the universal respect of the bar, by whom his decisions are always received with great consideration.

HIS HONOR JUDGE JAMIESON.
Mr. Joseph Jamieson was appointed Junior Judge of the County of Wellington in 1891. Born in the township of Sherbrook in 1839 he received his education at Perth Grammar School. As Warden of North Lanark he rendered valuable services to the county.

He was called to the bar in 1869 and in 1889 he was appointed Q.C. He was chosen to represent N. Lanark in the Commons from '82 to '91, and through his public career he has manifested those qualities which from the first marked him as a man of ability and sound judgment.

POLICE MAGISTRATE SAUNDERS.
T. W. Saunders, Esq., has been Police Magistrate of Guelph for many years. He is also Chairman of the Police Commission. Mr. Saunders presides at the

He was called to the bar in 1869 and in 1889 he was appointed Q.C. He was chosen to represent N. Lanark in the Commons from '82 to '91, and through his public career he has manifested those qualities which from the first marked him as a man of ability and sound judgment.

POLICE MAGISTRATE SAUNDERS.
T. W. Saunders, Esq., has been Police Magistrate of Guelph for many years. He is also Chairman of the Police Commission. Mr. Saunders presides at the

He was called to the bar in 1869 and in 1889 he was appointed Q.C. He was chosen to represent N. Lanark in the Commons from '82 to '91, and through his public career he has manifested those qualities which from the first marked him as a man of ability and sound judgment.

He was called to the bar in 1869 and in 1889 he was appointed Q.C. He was chosen to represent N. Lanark in the Commons from '82 to '91, and through his public career he has manifested those qualities which from the first marked him as a man of ability and sound judgment.

He was called to the bar in 1869 and in 1889 he was appointed Q.C. He was chosen to represent N. Lanark in the Commons from '82 to '91, and through his public career he has manifested those qualities which from the first marked him as a man of ability and sound judgment.

He was called to the bar in 1869 and in 1889 he was appointed Q.C. He was chosen to represent N. Lanark in the Commons from '82 to '91, and through his public career he has manifested those qualities which from the first marked him as a man of ability and sound judgment.

He was called to the bar in 1869 and in 1889 he was appointed Q.C. He was chosen to represent N. Lanark in the Commons from '82 to '91, and through his public career he has manifested those qualities which from the first marked him as a man of ability and sound judgment.

Agricultural Interests.

Guelph has long been known as the Smithfield of Canada. Through the exertions of the Guelph Fat Stock Club, with their Easter and Christmas shows, buyers were attracted from all parts to the Guelph market, until their shows were allied with the Provincial Fat Stock Show, which has been held at Guelph since 1884. The institution by the Government. The export of live stock from this city last year exceeded one and a quarter millions of dollars. The shipments of dressed beef and poultry to Halifax alone aggregate nearly \$100,000 yearly, while the Government's table on special occasions is always supplied direct from Guelph. The O. A. College herds are close to the city, while in easy reach may be found those of Messrs. Cockburn, Watt, Hunter and Shortburn, Mr. McCrae of Galloway, Mr. Rudd of Devona, A. Stone of Hereford, Messrs. Armit, Whitehead, Hart, Wright, Evans, Finn, of sheep, and many others whose fame as stockbreeders is perhaps not so widely known. There is no city in Canada, or, for that matter, in the United States, in the near neighborhood of which so many World's Fair winners in the cattle and sheep departments are to be found.

The South Wellington Agricultural Society, under whose auspices the Guelph Central Exhibition is annually held, is a solid and flourishing organization. Its president, Mr. James Anderson, the Laird of Puelish, as he is familiarly and affectionately called by his friends, was its first president. Its present executive head is Mr. Cowan and Mr. William Laidlaw, Jr., who fills the office of secretary, has general direction of the annual show, a circumstance which has largely contributed to its continued success.

One of the Old Guard.

POSTMASTER STIRTON.
No one enjoys to a larger extent the esteem and respect of the people of Guelph than Postmaster Stirton. He is one of the old guard, full of reminiscences and anecdotes of the early days and ever ready for a friendly chat. David Stirton is a native of Forfarshire, Scotland, came to Guelph with his father in 1821, and shortly afterwards settled in Puelish. He was a member of the Guelph and Ontario Investment & Savings Society, and has been president of that prosperous institution ever since its inception.

Confederation in 1876 in the Parliament of the Dominion. In May, 1876, he was appointed Postmaster and he has filled this office with eminent satisfaction to the public. Of late Mr. Stirton has been failing in health but the wish is general and sincere that he may yet be spared many years of usefulness amongst us. Mr. Stirton was the chief promoter of the Guelph & Ontario Investment & Savings Society, and has been president of that prosperous institution ever since its inception.

He was called to the bar in 1869 and in 1889 he was appointed Q.C. He was chosen to represent N. Lanark in the Commons from '82 to '91, and through his public career he has manifested those qualities which from the first marked him as a man of ability and sound judgment.

He was called to the bar in 1869 and in 1889 he was appointed Q.C. He was chosen to represent N. Lanark in the Commons from '82 to '91, and through his public career he has manifested those qualities which from the first marked him as a man of ability and sound judgment.

He was called to the bar in 1869 and in 1889 he was appointed Q.C. He was chosen to represent N. Lanark in the Commons from '82 to '91, and through his public career he has manifested those qualities which from the first marked him as a man of ability and sound judgment.

He was called to the bar in 1869 and in 1889 he was appointed Q.C. He was chosen to represent N. Lanark in the Commons from '82 to '91, and through his public career he has manifested those qualities which from the first marked him as a man of ability and sound judgment.

He was called to the bar in 1869 and in 1889 he was appointed Q.C. He was chosen to represent N. Lanark in the Commons from '82 to '91, and through his public career he has manifested those qualities which from the first marked him as a man of ability and sound judgment.

He was called to the bar in 1869 and in 1889 he was appointed Q.C. He was chosen to represent N. Lanark in the Commons from '82 to '91, and through his public career he has manifested those qualities which from the first marked him as a man of ability and sound judgment.

He was called to the bar in 1869 and in 1889 he was appointed Q.C. He was chosen to represent N. Lanark in the Commons from '82 to '91, and through his public career he has manifested those qualities which from the first marked him as a man of ability and sound judgment.

He was called to the bar in 1869 and in 1889 he was appointed Q.C. He was chosen to represent N. Lanark in the Commons from '82 to '91, and through his public career he has manifested those qualities which from the first marked him as a man of ability and sound judgment.

Leading County Officials.

WARDEN TOLTON.
Warden Edward Tolton is a native of Eramosa. He is a son of Mr. Henry Tolton, of that Township, and lived there till he was eighteen years of age. He is now, and has been for some years extensively engaged in the grain business in Guelph. Mr. Tolton has been ten times elected reeve of Cliford, eight times by acclamation. This, therefore, is his tenth year in the County Council. He

has all the qualities that make a successful public man, is popular with his fellow members and on him the honor of office gracefully and worthily rests. The high place Mr. Tolton occupies in the estimation of his fellows was evidenced recently when by a unanimous vote the Liberal-Conservatives of West Wellington tendered him the nomination for the Local House.

TREASURER REYNOLDS.
William Reynolds, Esq., has been Treasurer of the County since 1888. He succeeded the late Col. Hewat. Prior to that he was Deputy Registrar under Col. Webster. Mr. Reynolds is a

native of Wales, and in his young days served Her Majesty in the Imperial navy. He is a popular official and a gentleman of genial manner and refined tastes.

CLERK BEATTIE.
John Beattie is one of the pioneers of Fergus and has been Clerk of the County since 1871. He is thoroughly conversant with municipal law, is

looked upon as the adviser of the Council and enjoys in a large measure the esteem of its members and the people of the County.

REGISTRAR HIGINBOTHAM.
It is needless to say that Col. Higinbotham, Registrar of South Wellington, is an Irishman. He was born in 1830, came to Guelph in 1848, and for twenty years was actively identified with her mercantile interests.

Then he took to politics and from 1872 to 1878 he represented North Wellington in the Commons. During that time he fought four elections. In December, 1881, Col. Higinbotham was appointed Registrar and to that office he has faithfully devoted his time and ability ever since.

CROWN ATTORNEY PETERSON.
Henry William Peterson, Clerk of the Peace and Crown Attorney, is a York pioneer. He came to Guelph with his father in 1842, received his primary education at a private school and completed his studies at Toronto University, of which he is a medalist. He

was called to the bar in 1856 and in December, 1866, was made Crown Attorney of the Peace and Crown Attorney, is a York pioneer. He came to Guelph with his father in 1842, received his primary education at a private school and completed his studies at Toronto University, of which he is a medalist. He

was called to the bar in 1856 and in December, 1866, was made Crown Attorney of the Peace and Crown Attorney, is a York pioneer. He came to Guelph with his father in 1842, received his primary education at a private school and completed his studies at Toronto University, of which he is a medalist. He

was called to the bar in 1856 and in December, 1866, was made Crown Attorney of the Peace and Crown Attorney, is a York pioneer. He came to Guelph with his father in 1842, received his primary education at a private school and completed his studies at Toronto University, of which he is a medalist. He

was called to the bar in 1856 and in December, 1866, was made Crown Attorney of the Peace and Crown Attorney, is a York pioneer. He came to Guelph with his father in 1842, received his primary education at a private school and completed his studies at Toronto University, of which he is a medalist. He

SUBROGATE COURT CLERK.

Alexander Mackenzie, Clerk of the Subrogate Court, has filled that office since the death of Mr. T. A. Kesting.

JOHN MUTRIE, M.P.P.
John Mutrie, M.P.P. for South Wellington, is a son of the late Wm. Mutrie, and was born in the township of Eramosa. He was educated at a common school and when grown to manhood took an active interest in the volunteer movement. He joined the Eramosa Company and rose to the rank of Captain. He has for a great many

years been Major of the 30th Battalion. He also took quite an interest in municipal affairs, was a member of the Eramosa Council, then deputy-reve and reeve and filled the position of Warden of the County for two years. He was elected member for South Wellington in the Ontario Legislature in June, 1894.

Our Members.
JAS. INNES, M.P.
A newspaper man of long experience is Mr. James Innes, the present representative of South Wellington in the Dominion Parliament. He was born in Aberdeenshire in 1833 and taught school in Scotland for five years. On coming to Canada in 1854 he became a reporter on The Toronto Globe and was

afterwards a member of the editorial staff of The Colonist and Hamilton Banner, now The Times. Mr. Innes was first returned to Parliament in 1882 in the Liberal interests and he was re-elected at the general elections in '87 and '91. Though an unbending Liberal he enjoys the respect and admiration of his political opponents both in the House and the country.

Better possibly than any other city of its size in Canada is Guelph supplied with institutions for the care of the sick and infirm.

THE GENERAL.
The Guelph General Hospital, situated on the Eramosa hill, was incorporated by Act of Parliament and opened for the reception of patients in 1873. Owing to the gradual increase of patients, it was found necessary to enlarge its capacity, and in 1887 the Victoria Wing was built, which nearly doubled its accommodation.

The number of patients in 1875 and 1895 was:
1875 was 393
Number of patients in 1888.....393
Number of patients in 1889.....440
Number of patients in 1890.....429
Number of patients in 1891.....431
Number of patients in 1892.....481
Number of patients in 1893.....405
Number of patients in 1894.....406
Number of patients ending September, 1895.....512

The number of days of patients under treatment in 1882 was 5,818, and in 1895 this had increased to 14,200. It is a public institution in the fullest sense, being entirely non-sectarian and governed by twelve directors, who are also trustees and are elected annually. In the month of June, by the votes of subscribers to the support of the Hospital, one vote for each \$4 subscribed. The qualification for admittance, free of all charge, is that the person is poor, sick and suffering, regardless of creed or country. The boon conferred upon many is very great, especially where suitable nursing and attendance could not be obtained in their homes. They have found medical skill and every tender care bestowed upon them in the Hospital.

Sports, Amusements, Etc.
Though Guelph people are not behind in the hustle and business activity that are so essential in these days to commercial success they pay due attention to sports and amusements. Against them the charge made so frequently against the people of the old land that they take their recreation seriously cannot truthfully be levelled. See them at a baseball game 4,000 or 6,000 strong, men and women, boys and girls, cheering like mad, and one must be convinced Guelph people know how to whole heartedly enter into the spirit

An important and gratifying element in the entertainment of Guelph citizens is the magnificent opera house recently completed and so successfully managed by Mr. Albert Tavernier. All the finest attractions on the road, and none of an inferior grade, appear at this house and audiences are invariably large and discriminatingly appreciative.
The Guelph Trap and Game Club is one of the best of its kind in this part of the country. It was established in 1888. It has over seventy-five members

of true sport. In baseball the city has long led the Dominion. In cricket and kindred sports its representatives meet with encouraging success.
Skating, curling and hockey are popular diversions sought by the young and old in the winter months. The Victoria rink, the largest and finest in Canada, offers splendid facilities for the exercise of these sports. There are two curling clubs in Guelph, the Union and the Royal City, and here the famous Sleeman and Guelph trophies are annually competed for.

and its officers are—H. H. Cull, Jr., President; R. Cunningham, Vice-President; H. H. Cull, Jr., Secretary; L. S. Gull, Jr., Treasurer; Executive Committee—H. S. Gull, chairman; C. Quinn and G. O. Aikins, auditors.—H. Cunningham and H. M. Williams.
Besides their comfortable shooting lodge, situated just outside the limits of the Royal City, and on the line of the Guelph Street Railway, the club owns a beautiful fishing reserve at Eden Mills, a short distance from Guelph.

staff of The Colonist and Hamilton Banner, now The Times. Mr. Innes was first returned to Parliament in 1882 in the Liberal interests and he was re-elected at the general elections in '87 and '91. Though an unbending Liberal he enjoys the respect and admiration of his political opponents both in the House and the country.

JOHN MUTRIE, M.P.P.
John Mutrie, M.P.P. for South Wellington, is a son of the late Wm. Mutrie, and was born in the township of Eramosa. He was educated at a common school and when grown to manhood took an active interest in the volunteer movement. He joined the Eramosa Company and rose to the rank of Captain. He has for a great many

years been Major of the 30th Battalion. He also took quite an interest in municipal affairs, was a member of the Eramosa Council, then deputy-reve and reeve and filled the position of Warden of the County for two years. He was elected member for South Wellington in the Ontario Legislature in June, 1894.

Our Members.
JAS. INNES, M.P.
A newspaper man of long experience is Mr. James Innes, the present representative of South Wellington in the Dominion Parliament. He was born in Aberdeenshire in 1833 and taught school in Scotland for five years. On coming to Canada in 1854 he became a reporter on The Toronto Globe and was

afterwards a member of the editorial staff of The Colonist and Hamilton Banner, now The Times. Mr. Innes was first returned to Parliament in 1882 in the Liberal interests and he was re-elected at the general elections in '87 and '91. Though an unbending Liberal he enjoys the respect and admiration of his political opponents both in the House and the country.

Better possibly than any other city of its size in Canada is Guelph supplied with institutions for the care of the sick and infirm.

THE GENERAL.
The Guelph General Hospital, situated on the Eramosa hill, was incorporated by Act of Parliament and opened for the reception of patients in 1873. Owing to the gradual increase of patients, it was found necessary to enlarge its capacity, and in 1887 the Victoria Wing was built, which nearly doubled its accommodation.

The number of patients in 1875 and 1895 was:
1875 was 393
Number of patients in 1888.....393
Number of patients in 1889.....440
Number of patients in 1890.....429
Number of patients in 1891.....431
Number of patients in 1892.....481
Number of patients in 1893.....405
Number of patients in 1894.....406
Number of patients ending September, 1895.....512

The number of days of patients under treatment in 1882 was 5,818, and in 1895 this had increased to 14,200. It is a public institution in the fullest sense, being entirely non-sectarian and governed by twelve directors, who are also trustees and are elected annually. In the month of June, by the votes of subscribers to the support of the Hospital, one vote for each \$4 subscribed. The qualification for admittance, free of all charge, is that the person is poor, sick and suffering, regardless of creed or country. The boon conferred upon many is very great, especially where suitable nursing and attendance could not be obtained in their homes. They have found medical skill and every tender care bestowed upon them in the Hospital.

Sports, Amusements, Etc.
Though Guelph people are not behind in the hustle and business activity that are so essential in these days to commercial success they pay due attention to sports and amusements. Against them the charge made so frequently against the people of the old land that they take their recreation seriously cannot truthfully be levelled. See them at a baseball game 4,000 or 6,000 strong, men and women, boys and girls, cheering like mad, and one must be convinced Guelph people know how to whole heartedly enter into the spirit

An important and gratifying element in the entertainment of Guelph citizens is the magnificent opera house recently completed and so successfully managed by Mr. Albert Tavernier. All the finest attractions on the road, and none of an inferior grade, appear at this house and audiences are invariably large and discriminatingly appreciative.
The Guelph Trap and Game Club is one of the best of its kind in this part of the country. It was established in 1888. It has over seventy-five members

of true sport. In baseball the city has long led the Dominion. In cricket and kindred sports its representatives meet with encouraging success.
Skating, curling and hockey are popular diversions sought by the young and old in the winter months. The Victoria rink, the largest and finest in Canada, offers splendid facilities for the exercise of these sports. There are two curling clubs in Guelph, the Union and the Royal City, and here the famous Sleeman and Guelph trophies are annually competed for.

and its officers are—H. H. Cull, Jr., President; R. Cunningham, Vice-President; H. H. Cull, Jr., Secretary; L. S. Gull, Jr., Treasurer; Executive Committee—H. S. Gull, chairman; C. Quinn and G. O. Aikins, auditors.—H. Cunningham and H. M. Williams.
Besides their comfortable shooting lodge, situated just outside the limits of the Royal City, and on the line of the Guelph Street Railway, the club owns a beautiful fishing reserve at Eden Mills, a short distance from Guelph.

of true sport. In baseball the city has long led the Dominion. In cricket and kindred sports its representatives meet with encouraging success.
Skating, curling and hockey are popular diversions sought by the young and old in the winter months. The Victoria rink, the largest and finest in Canada, offers splendid facilities for the exercise of these sports. There are two curling clubs in Guelph, the Union and the Royal City, and here the famous Sleeman and Guelph trophies are annually competed for.