

THE NEW WAY TO SAW WOOD

If you want to saw your wood cheaply and also make money sawing for your neighbors, get a

FAIRBANKS-MORSE Jack-of-all-Trades GASOLINE ENGINE

A 2 H.P. engine will saw wood as fast as three men can handle it.

It also pumps water, grinds, shells corn, runs separator, etc., etc. Write to-day for free catalog 101 showing the different uses the engine can be applied to.

Cut out this advertisement and send it to
The Canadian Fairbanks Company, Limited, 92-94 Arthur St., WINNIPEG

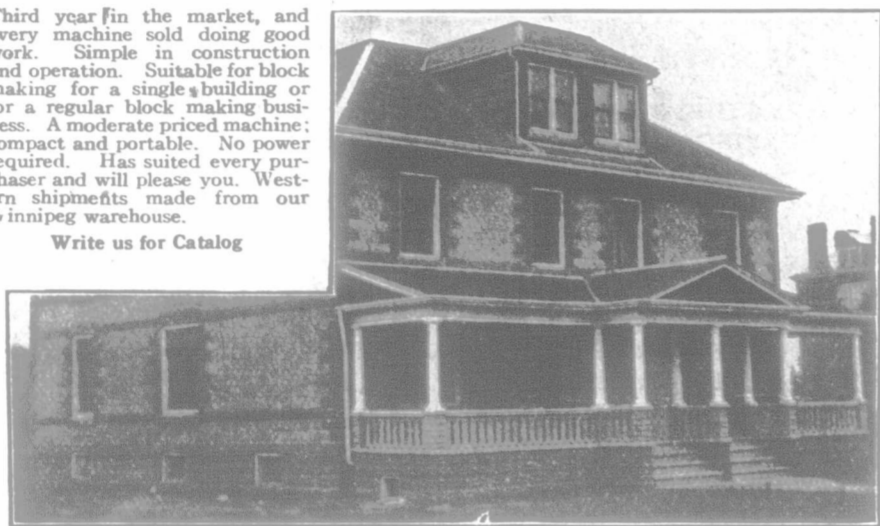
I may want an engine for.....

Name..... Address.....

The Dunn Hollow Concrete Block Machine

Third year in the market, and every machine sold doing good work. Simple in construction and operation. Suitable for block making for a single building or for a regular block making business. A moderate priced machine; compact and portable. No power required. Has suited every purchaser and will please you. Western shipments made from our Winnipeg warehouse.

Write us for Catalog



Address Dept. N, THE JAS. STEWART MFG. CO. Limited, Woodstock, Ont.

Mention the FARMER'S ADVOCATE when answering advertisements

IMPROVED FARMS

We have a few special chances to locate some good farmers on first-class improved farms in one of the best farming districts in Saskatchewan. Main line C. P. R., good town, six elevators, good schools, fertility of soil, unequalled. Terms easy. Write at once for particulars, stating how much land wanted, whether you want all prairie or partly wooded, all for wheat or mixed farming, and the amount you can pay down. Information and experience of 24 years residence in the country is at your disposal for the asking.

B. P. RICHARDSON,
Grenfell, Sask.

HARDY TREES FOR A TREELESS COUNTRY

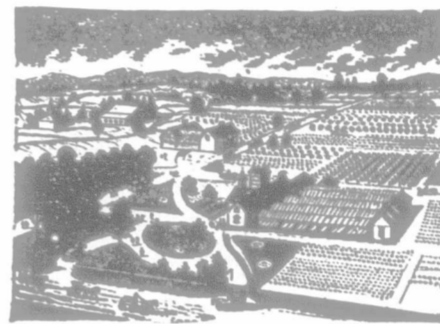
Grown and For Sale by

"CANADA'S GREATEST NURSERIES"

Thoroughly tested and recommended by the

WESTERN EXPERIMENTAL
STATIONS at BRANDON and
INDIAN HEAD

as suitable varieties for
Manitoba, Alberta
and Saskatchewan



SALESMEN
WANTED

Start now at best selling time
BIG INDUCEMENTS, PAY WEEKLY,
PERMANENT EMPLOYMENT.

Specially designed Western Outfit free. For full information write—

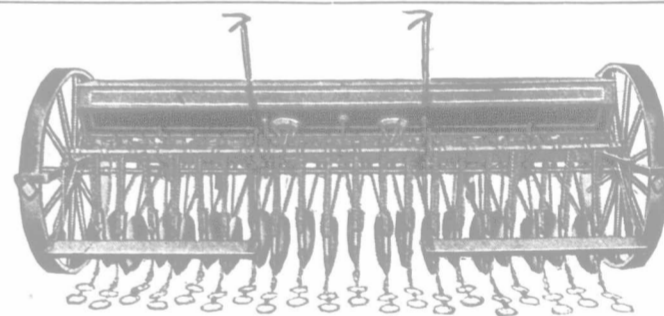
STONE & WELLINGTON

Over 800 Acres

FONTHILL NURSERIES

Toronto, Ontario

The Bumper Crop Begins with the Good Seed Bed



Every experienced farmer knows that if he would grow the largest crop possible, he must begin with the very first work on the ground. Correct preparation of the seed bed is of the greatest importance. And this depends in large measure on the kinds of implements used.

With Deering Harrows and Drills there is no question as to results as far as ground preparation and seeding is concerned. They have been tested under every condition and developed from year to year until they represent the highest type of efficiency.

The Disk Harrow (inthrow and outthrow fork) is especially adapted by its construction to resist the severe strain to which a harrow of this kind is subjected, especially when opening a stiff soil. The disks are made of special tempered steel, and can be set at any desired angle by means of levers. No matter what the ground conditions, the Deering Disk Harrow works perfectly.

The Smoothing Harrow has proved especially well adapted for working stony land. Inasmuch as this harrow is built on the square and drawn on an angle from one end of the middle to the double-tree, the soil is always cultivated the full width of the harrow.

The Shoe Drill is an ideal drill for use in loamy soils or those somewhat sandy. It cuts a very clean seed furrow, drops the seed regularly and with the aid of the chain covers perfectly. Has double run force feed, pressure springs control depth of shoes and enable them to pass over obstacles without injury. Strong angle steel frame, high broad faced wheels. Made in four sizes: 14, 16, 20 and 22 shoes.

The Deering Single Disk Drill. The disks on this drill are staggered so that the drill is a zigzag disk drill. This provides for wide clearance between the disks and makes it an ideal implement for seeding stubble or rough and cloddy land. The disks are set at the correct pitch to cut

into the soil to the proper depth and the ground is left in good condition for depositing the seed. Each disk is equipped with a curved knife scraper. This Drill is made in four sizes, namely 14, 16, 20 and 22 disks.

The Sectional Cultivator is unexcelled for tearing up the stiffest soil. The machine is unusually substantial in construction and the teeth are made from the finest tempered steel. This machine is so strong that it has been used to tear up Macadamized roads. This gives an idea of the wonderful strength and the tearing up power of the teeth. This cultivator can be changed into a seeder by attaching a seed box. Made in two sizes, 6 feet with 3 sections, and 7½ feet with 4 sections.

The Deering line of Tillage Implements and Seeding Machines for Canada is complete and includes, in addition to the above, Cultivators and Lever Harrows.

Call on the International Local Agent or Write Nearest Branch House for Catalog.

WESTERN CANADIAN BRANCHES:

Calgary, Regina and Winnipeg

Send three 2-cent stamps for a copy of "Farm Science." Book just from the press, written by eight leading agricultural authorities of the United States. Treats practically every farm topic in the most forceful money-making way.



International Harvester Co. of America

(INCORPORATED)

CHICAGO, U. S. A.