

# The Canadian Bridge Co., Limited

Manufacturers

WALKERVILLE, ONT.

Locomotive Turn Tables.  
Roofs, Steel Buildings and  
Structural Iron Work of all Descriptions.

## RAILWAY AND HIGHWAY BRIDGES

**GERMAN ALSEN**, at higher prices than competitors has again this year been awarded the most important contracts of the World because practical tests by leading Engineers proved its merit and relative economy. Note the wing:—

	1905—1906		905—1906
MEXICO CITY	120,000 bbls.	U.S. PHILIPP COVMT	40,000 bbls.
MECAXA DAM (shipping instructions so far 60,000 bbls.) approximate amount	175,000 bbls.	COVMT. ORDER SOUTH AMERICA	150,000 bbls.
XOCHIMILCO WATER WKS., MEX. approximate	200,000 bbls.	RIO DE JANEIRO, SATOS, ETC.	40,000 bbls.

Also enormous quantities for the PACIFIC COAST, AUSTRALIA, ENGLAND, SOUTH AFRICA, &c.

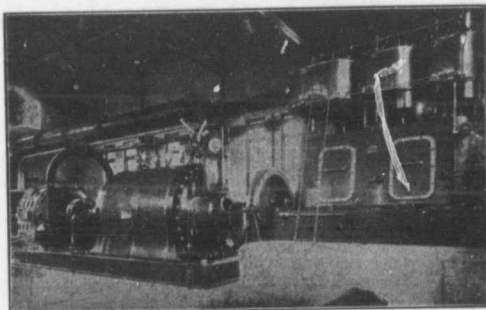
There is always a certain trade who will pay for the best. We also make American Alsen, the highest grade of domestic Portland cement.

**CEMENT**

45 BROADWAY, NEW YORK CITY

**CEMENT**

We protect our customers!



Stage Turbine Pump Electric Motor and High Speed Steam Engine.  
Built for the Montreal Water and Power Co., to do 4,500 Imperial  
gallons a minute against 300 feet head. Overall E.H. 70%.

## PATENT TURBINE PUMPS

KORTUNG TWO CYCLE GAS ENGINES,  
GRAVITY AND PRESSURE FILTER  
W/ SOFTENING APPARATUS,  
ELECTRICAL MACHINES.

— BUILT BY —

**MATHER & PLATT, LIMITED**  
MANCHESTER, ENG.

**Drummond, McCall & Co., Montreal**

# CANADIAN IRON AND FOUNDRY CO. LIMITED

Special Castings

Flange Pipe

Branches

Hydrants

## CAST IRON PIPE

Valves

Valve Boxes and

General Water

Works Supplies

SMALL DIAMETER HEELS AND CASTINGS FOR CONTRACTORS  
CAR WHEELS. CASTINGS OF ALL KINDS.

WORKS AT:

HAMILTON, ONT.  
ST. THOMAS, ONT.  
FORT WILLIAM, ONT.

MONTREAL, P. Q.  
THREE RIVERS, P. Q.  
LONDONDERRY, N. S.

Head Office: **IMPERIAL BANK CHAMBERS, MONTREAL.**