

for the lining, and a yard and three-fourths of ribbon four inches wide for the ties. Price of pattern, 5d. or 10 cents.

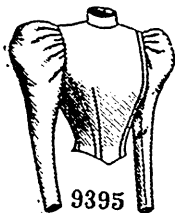
LADIES' SACK CHEMISE, FASTENED ON THE SHOULDERS.

(For Illustration see Page 299.)

No. 1479.—This is an improved style of sack chemise. Nainsook was here selected for it and a pretty decoration is arranged with edging headed by ribbon-run beading at the neck and arm's-eyes and two rows of insertion on the front. The back and front are joined in under-arm seams and are smooth at the top but are shaped to give desirable width in the lower part; they are fastened together on the shoulders with buttons and button-holes, the shoulder edges of the front overlapping and being pointed. The neck is shaped in low, round outline.

Long cloth, lawn, fine cambric and muslin are suitable for chemises and they may be decorated as elaborately as desired with lace or embroidered edging, insertion and beading or ruffles of the material. A dainty chemise was fashioned after this pattern from fine nainsook. Swiss insertion was arranged on the front in short upright rows pointed at the ends.

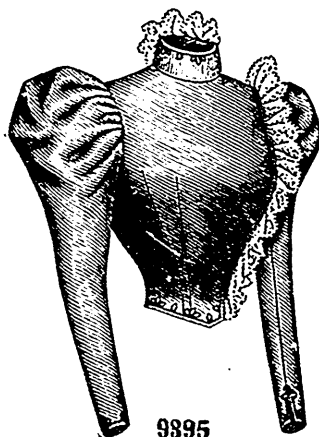
We have pattern No. 1479 in nine sizes for ladies from thirty to forty-six inches, bust measure. To make the chemise for a lady of medium size, will require two yards and five-eighths of material thirty-six inches wide. Price of pattern, 10d. or 20 cents.



LADIES' WORK APRON.

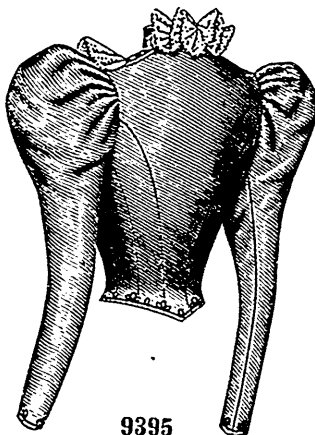
(For Illustrations see Page 400.)

No. 1470.—An indispensable article to the practical woman of affairs is a work apron that is protective and simple to make. The one here pictured made of linen in the natural linen hue is finished with machine-stitch-



9395

Front View.



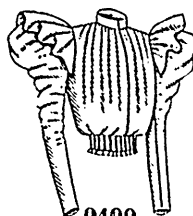
9395

Back View.

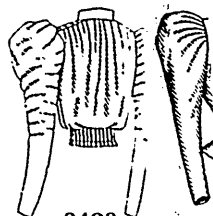
LADIES' BASQUE, CLOSED AT THE LEFT SIDE.

(For Description see Page 386.)

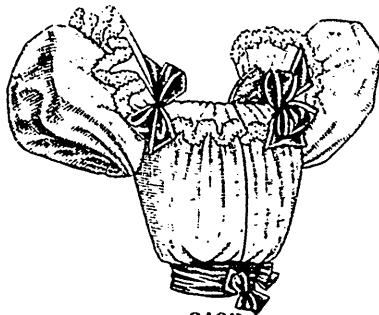
prettily bowed at the center of the back. A smooth bib is sewed to the top of the belt; it is framed by straps that extend over the shoulders and



9409

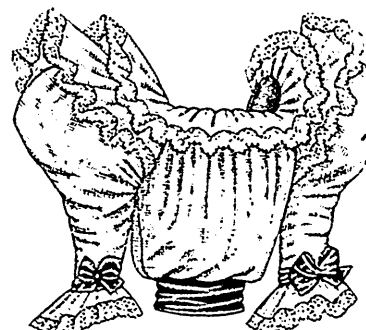


9409



9409

Front View.



9409

Back View.

LADIES' POUCH WAIST. (TO BE MADE WITH A HIGH OR SQUARE NECK AND WITH FULL-LENGTH ELBOW OR SHORT SLEEVES.) KNOWN AS THE JUBILEE WAIST.

(For Description see Page 357.)

cross, brace fashion, at the back, their back ends buttoning the belt. On the right side of the skirt is a good sized pocket hemmed at its upper edge.

Linen, gingham, denim, chambray and—if white goods are desired—cross-barred muslin, cambric or nainsook are some of the most popular fabrics for an apron of this kind; embroidered edging may trim the bib or the apron may be finished with stitching throughout. Linen aprons are sometimes trimmed with embroidered edging in red or blue, the pattern being worked in colors on white cambric.

We have pattern No. 1470 in three sizes for ladies from twenty-two to thirty inches, waist measure. To make the apron for a lady whose waist measures twenty-six inches calls for two yards and three-eighths of material thirty-six inches wide. Price of pattern, 7d. or 10 cents.

LADIES' AND GIRLS' SWIMMING SUIT. (TO BE MADE WITH A HIGH OR SQUARE NECK.)

(For Illustrations see Page 400.)

No. 1472.—A well-shaped swimming suit allowing perfect freedom of movement is here shown made of blue flannel and decorated with white braid in two widths. The suit is made with a square yoke shaped by shoulder seams and may have a high or square neck. To the yoke is joined the gathered upper edge of the body portion, which is extended to form short, plain drawers of ample width. The shaping is completed by inside leg seams and a center seam that extends from the yoke at the back to extensions allowed on the fronts. The closing is made with buttons and button-holes in a fly. Tapes inserted in a casing draw the fullness about the waist and a belt with pointed ends is closed in front. The sleeves are very short with only short seams under the arms and slight gathered fullness.

Mohair or alpaca may be used for the suit as well as serge and heavy silk. Braid is the usual decoration.

We have pattern No. 1472 in eleven sizes from twenty-four to forty-four inches, bust measure. For a lady of thirty-six inches, bust measure, the garment needs two yards and a

ing and its features are pleasing and practical. The full skirt of the apron is deeply hemmed at the bottom, gathered at the top and sewed to a belt to which long tie ends are sewed and

shown
The
here i
gists o
circula
A sing
the sk
into sh
below
backw
plaits
each
placke
meetin
and
gradu
fan of
the
where
meas
over
the r
With
small
style
tend
wor
Sil
cloth
vert
whip
velo
cloth
fash
rials
dev
W
No.
size
from
of
inc