

"R. I. W." DAMP RESISTING PAINT
"TOXEMENT"
"CEMENT FILLER" and "CEMENT FLOOR PAINT"

(TOCH BROS.—NEW YORK)
 (Established 1848)

"R. I. W." NO. 232

For application to the inner surface of exterior brick or masonry walls, above grade level. Prevents the penetration of dampness. Saves the cost of furring and lathing.

"R. I. W." NO. 110

For backing limestone, granite and other building stones. Absolutely prevents any interior acid, alkali, rust or moisture from reaching the surface of the stone.

"TOXEMENT"

A chemical compound which, when mixed to the extent of 2 per cent. of the amount of Portland Cement used, will render cement or concrete construction absolutely water-proof against pressure. Is used for water-proofing floors, foundations, elevator and boiler pits, cement mortar troweled on the outside of rubble foundations, cement stucco, etc.

"R. I. W." NO. 112

Used on structural steel work which is to be encased in masonry, and on brine and condenser pipes. This material will not withstand exposure to the elements.

"CEMENT FILLER" and "CEMENT FLOOR PAINT"

For use on cement floors in hospitals, laboratories, engine rooms, factories, etc. Will prevent cement floors from dusting up, also renders them oil-proof and water-proof.

SEND FOR LITERATURE AND INFORMATION

CANADIAN OFFICE AND FACTORY

The "R. I. W." Damp Resisting Paint Co.
 1372-1376 Bathurst Street
 TORONTO

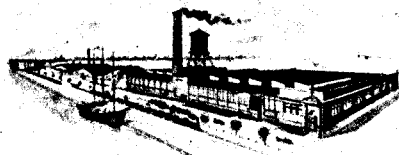
CHILLAS-BLACK, LIMITED
 TORONTO

E. F. DARTNELL
 MONTREAL

CANADIAN DISTRIBUTORS
 THOMAS BLACK
 WINNIPEG

WM. N. O'NEIL & CO.
 VANCOUVER

THE CANADIAN EQUIPMENT & SUPPLY CO.
 CALGARY



GLASS BENDERS
 TO THE TRADE

THE
TORONTO PLATE GLASS
IMPORTING COMPANY,
 LIMITED

91-133 DON ROADWAY
 TORONTO

GLASS IMPORTERS
 AND
 MANUFACTURERS

BRITISH MADE
Terra Cotta

The Product of

KING BROTHERS, Limited
 Proprietors of Stourbridge Clays
 Stourbridge, England

Reds, Buff,
Stone Grey
and all colors glazed
and unglazed

Estimates on Application by

The TORONTO PLATE GLASS
IMPORTING COMPANY, Ltd.

Tel. M. 13877

Don Roadway

TORONTO