

Board of Education Administration Building

Where Toronto School Officials and School Building Department Have Their Headquarters

A FINE, new administration building of the Board of Education contains the board room, members' room, committee rooms and the administrative offices of the board such as the secretary-treasurer's, school inspectors', superintendent of supplies' and superintendent of buildings.

Temporary offices were at one time at the corner of Wellington and Church streets, later at the corner of Richmond and York streets, in the York Street School, and later in the City Hall, during which time the board found it necessary to use the City Council chamber for a board room.

The building is sixty-seven feet across the front, ninety-one feet in depth, and is four stories above the basement.

The basement floor contains the caretakers' quarters, lunch rooms for the staff, store rooms and heating apparatus. The ground floor opens out into College street, also at the side to a driveway, and contains offices for the supply department, offices for the medical inspection department, a special members' room, the board room, the telephone central, and, in the main hall, the general inquiry wicket. The second floor contains two committee rooms, and offices for the secretary-treasurer. The third floor contains a private office for the chief inspector, library, a private office for special supervisors, a filing room for the buildings' department, and a tendering room for contractors to view plans and specifications. The fourth floor contains a

private office for the superintendent of buildings, and general offices for his staff, including a specially designed draughting room for preparing plans and specifications, etc. The ceiling of this room is extra high; lighting is from

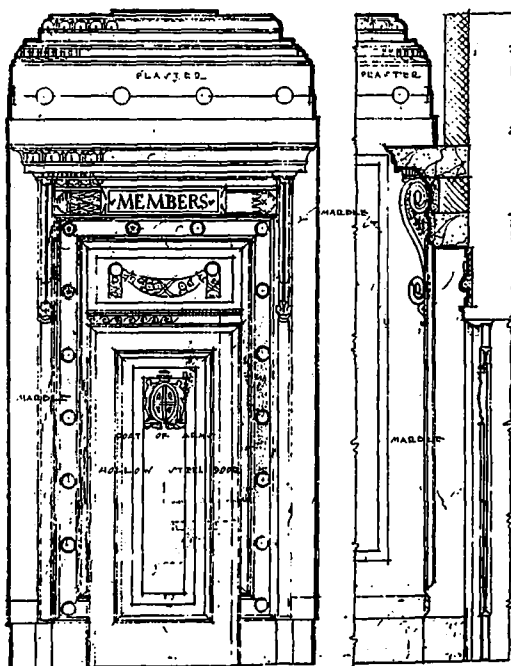
three sides, and from the top by a large skylight, with a cheerful southerly exposure. The facilities of the room are excellent, being equipped with the most modern draughting tables and filing cabinets.

The type of general construction is steel skeleton and what is termed as first-class fire-proof construction. The floors, roof, columns, coverings and partitions are terra cotta, the exterior being enclosed with brick curtain walls supported by the steel frame. As the building was erected over the old "Sleepy Hollow Creek," it was necessary to carry the columns down a considerable depth, and use independent reinforced concrete spread footings.

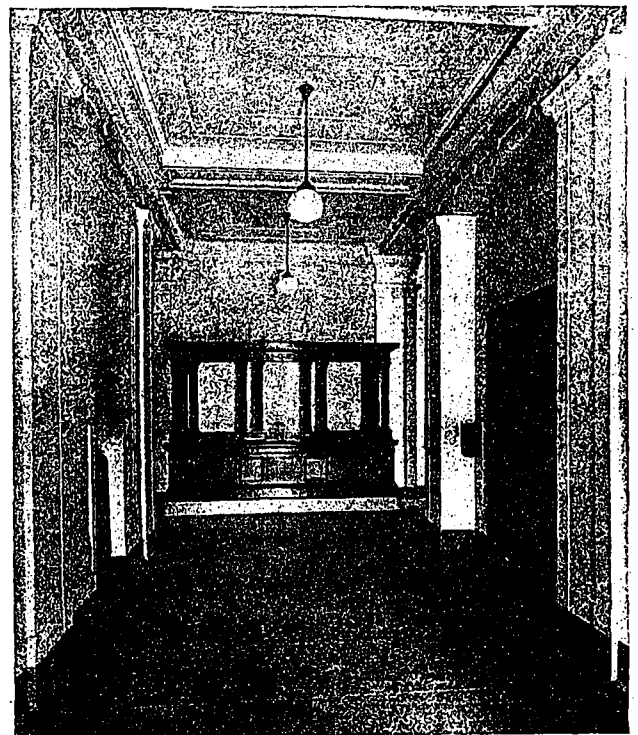
The heating throughout is by direct steam; and in addition to this the members' private room, the board room, and the two committee rooms, have a special warm air blast system to supply fresh air.

An electric elevator accommodates all floors, including the basement and roof, and a hand hoist is fitted up in the basement for removing ashes. The lighting is electric, through semi-direct fixtures. Vault, toilet room, etc., accommodation for the different departments is provided for on their respective floors.

The design is of pure Greek Ionic architecture, as nearly as could be adapted to a modern office building; the choice of grey brick and



DETAIL OF DOOR TO MEMBERS' ROOM.



MAIN ENTRANCE HALL AND ELEVATOR.